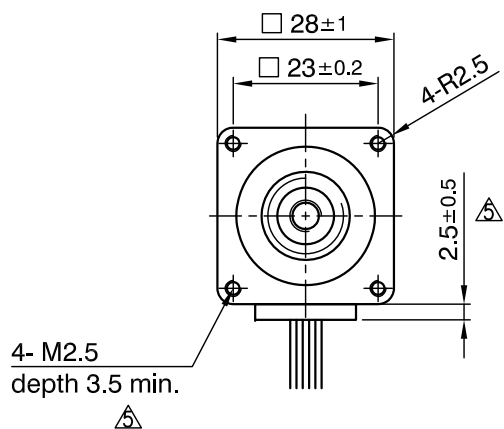
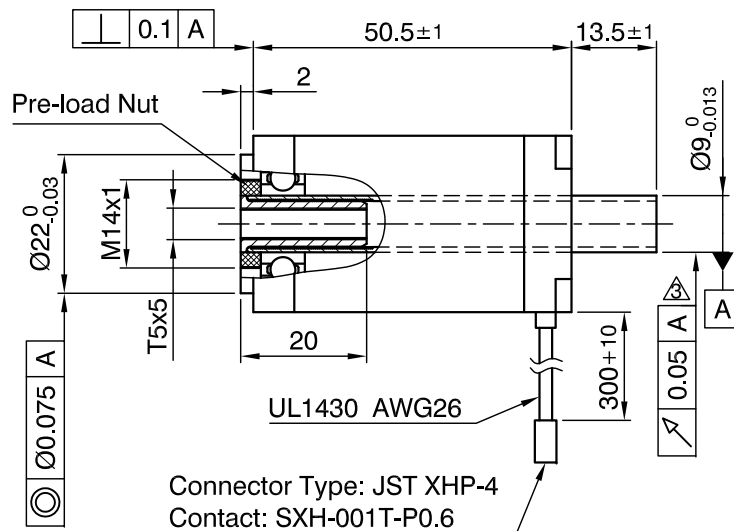


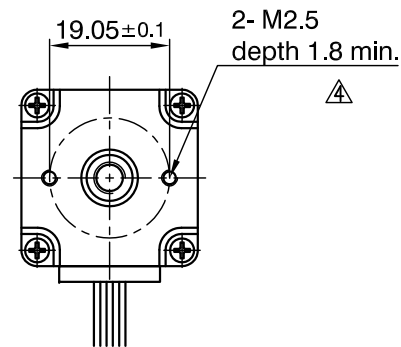
Front view and mounting



Side view



Rear view



SPECIFICATION	
AMPS/PHASE	0.67
RESISTANCE/PHASE (Ohms)@25°C	9.2±15%
INDUCTANCE/PHASE (mH) @1KHz	7.2±20%
SPINDLE PITCH (mm) [in]	5 [0.197]
THRUST (N) [lbf]	60 [13.48]
RESOLUTION (mm/STEP)	0.025
STATIC THRUST (N) [lbf] (NO CURRENT)	17
MAX. SPEED (mm/sec.) AT 48V	140
MAX. SPEED WITH MAX. THRUST (mm/sec.) AT 48V	50
WEIGHT (Kg) [lb]	0.19 [0.419]
TEMPERATURE RISE: MAX.80°C (MOTOR STANDSTILL; FOR 2 PHASE ENERGIZED)	
AMBIENT TEMPERATURE -10°~ 50°C [14°F ~ 122°F]	
INSULATION RESISTANCE 100 MOhm (UNDER NORMAL TEMPERATURE AND HUMIDITY)	
INSULATION CLASS B 130° [266°F]	
DIELECTRIC STRENGTH 500VAC FOR 1 MIN. (BETWEEN THE MOTOR COILS AND THE MOTOR CASE)	
AMBIENT HUMIDITY MAX. 85% (NO CONDENSATION)	

Please regard the application note at www.nanotec.com for further informations.

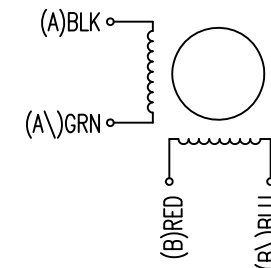
Shaft play is adjustable at the motor.

PIN NO	TYPE OF CONNECTION (EXTERN)		MOTOR	
	BIPOLAR	LEADS	WINDING	
1	A —	BLK	A	
2	A\ —	GRN	A\	
3	B —	RED	B	
4	B\ —	BLU	B\	

WIRING DIAGRAM

FULL STEP 2 PHASE-Ex., WHEN FACING MOUNTING END (X)

STEP	A	B	A\	B\		CCW
1	+	+	-	-		
2	-	+	+	-		
3	-	-	+	+		
4	+	-	-	+		



REV	DESCRIPTION	DATE	DRN	Surface specification DIN ISO 1302	General tolerances DIN ISO 2768- cH	Work piece edge DIN ISO 13715	APVD	S.Ha.	15.01.10	DWG.NO
5	change depth M2.5/rework draw	09.03.16	A.S.				CHKD			
4	new-depth thread M2.5	20.08.15	A.S.	DRN	J.W.	15.01.10				
3	RUNOUT UPDATED	08.07.11	J.W.				SIGNATURE	DATE		



LINEAR ACTUATOR

L2818L0604-T5x5