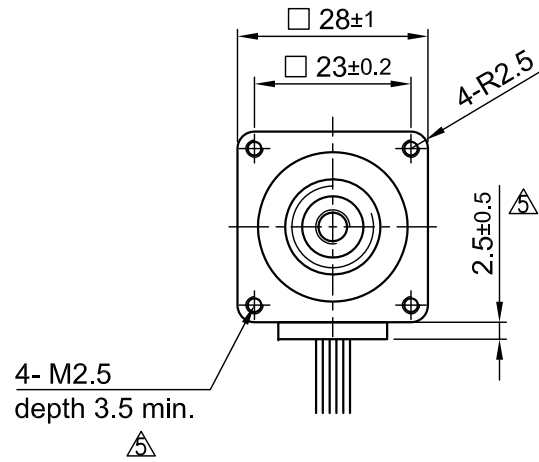
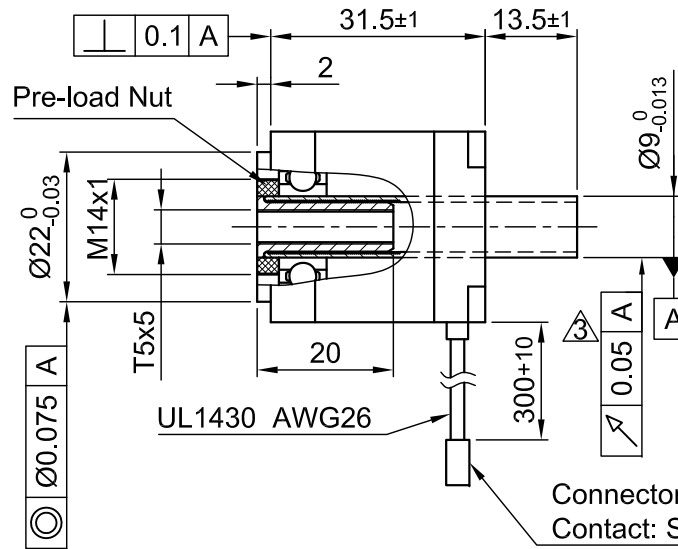


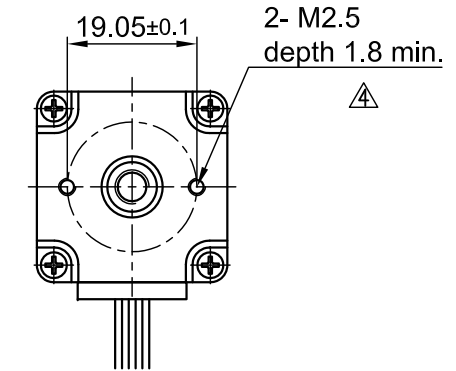
Front view and mounting



Side view



Rear view



Connector Type: JST XHP-4
Contact: SXH-001T-P0.6

SPECIFICATION	
AMPS/PHASE	0.67
RESISTANCE/PHASE (Ohms)@25°C	5.6±15%
INDUCTANCE/PHASE (mH) @1KHz	4.0±20%
SPINDLE PITCH (mm) [in]	5 [0.197]
THRUST (N) [lbf]	30 [6.74]
RESOLUTION (mm/STEP)	0.025
STATIC THRUST (N) [lbf] (NO CURRENT)	13
MAX. SPEED (mm/sec.) AT 48V	100
MAX. SPEED WITH MAX. THRUST (mm/sec.) AT 48V	50
WEIGHT (Kg) [lb]	0.11 [0.242]
TEMPERATURE RISE: MAX.80°C (MOTOR STANDSTILL; FOR 2 PHASE ENERGIZED)	
AMBIENT TEMPERATURE -10°~ 50°C [14°F ~ 122°F]	
INSULATION RESISTANCE 100 MOhm (UNDER NORMAL TEMPERATURE AND HUMIDITY)	
INSULATION CLASS B 130° [266°F]	
DIELECTRIC STRENGTH 500VAC FOR 1 MIN. (BETWEEN THE MOTOR COILS AND THE MOTOR CASE)	
AMBIENT HUMIDITY MAX. 85% (NO CONDENSATION)	

Please regard the application note at www.nanotec.com for further informations.

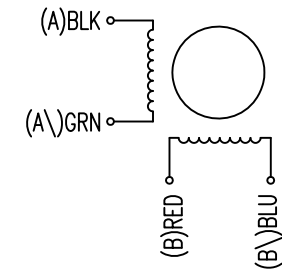
Shaft play is adjustable at the motor.

TYPE OF CONNECTION (EXTERN)	MOTOR		
	BIPOLAR	LEADS	WINDING
1	A —	BLK	A
2	A\ —	GRN	A\
3	B —	RED	B
4	B\ —	BLU	B\

WIRING DIAGRAM

FULL STEP 2 PHASE-Ex., WHEN FACING MOUNTING END (X)

STEP	A	B	A\	B\	CCW	CW
1	+	+	-	-	↓	↑
2	-	+	+	-	↓	↑
3	-	-	+	+	↓	↑
4	+	-	-	+	↓	↑



REV	DESCRIPTION	DATE	DRN	Surface specification DIN ISO 1302	General tolerances DIN ISO 2768- cH	Work piece edge DIN ISO 13715	APVD	S.Ha.	15.01.10	LINEAR ACTUATOR
5	change depth M2.5/rework draw	09.03.16	A.S.				CHKD			
4	new-depth thread M2.5	20.08.15	A.S.				DRN	J.W.	15.01.10	L2818S0604-T5x5
3	RUN OUT UPDATED	08.07.11	J.W.				SIGNATURE	DATE		