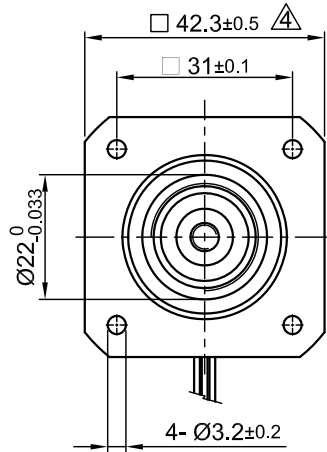
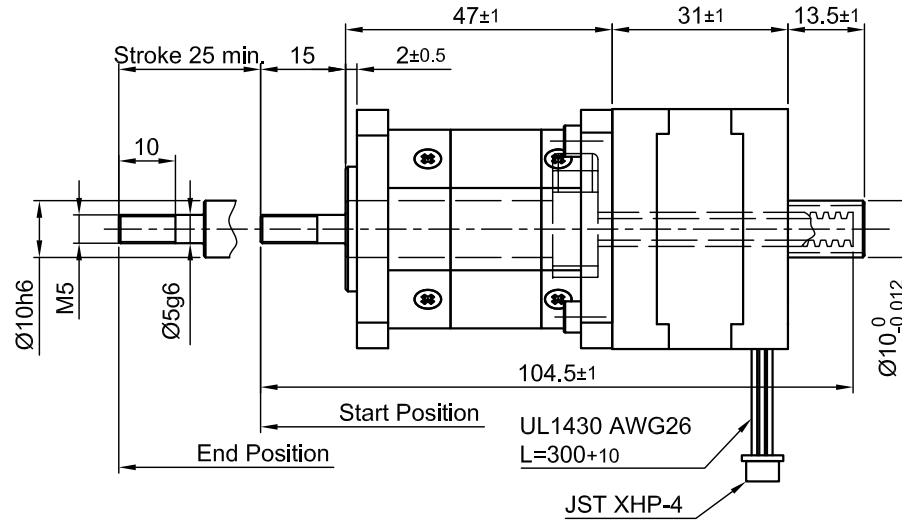


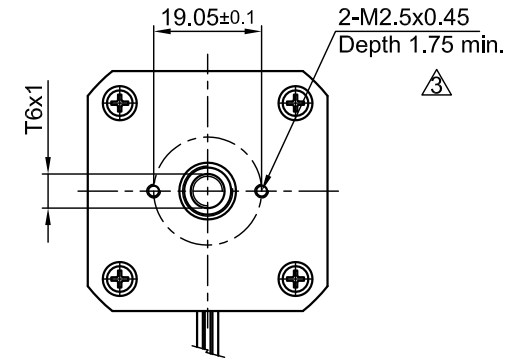
Front view and mounting



Side view



Rear view



SPECIFICATION

| | |
|--------------------------------|-------------|
| AMPS/PHASE | 1.4 |
| RESISTANCE/PHASE (Ohms)@25°C | 2.0±15% |
| INDUCTANCE/PHASE (mH) @1KHz | 2.8±20% |
| SPINDLE PITCH (mm) [in] | 1 [0.039] |
| THRUST (N) | 350 |
| RESOLUTION (mm/FULLSTEP) | 0.005 |
| STATIC THRUST (N) (NO CURRENT) | 300 |
| MAX. SPEED (mm/sec.) AT 48V | 40 |
| WEIGHT (Kg) [lb] | 0.35 [0.77] |

Please regard the application note at www.nanotec.com for further informations.

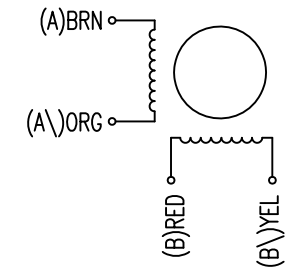
Shaft play is adjustable at the motor.

| PIN NO | TYPE OF CONNECTION (EXTERN) | | MOTOR | |
|--------|-----------------------------|-------|---------|--|
| | BIPOLAR | LEADS | WINDING | |
| 1 | A — | BRN | A | |
| 2 | A\ — | ORG | A\ | |
| 3 | B — | RED | B | |
| 4 | B\ — | YEL | B\ | |

WIRING DIAGRAM

FULL STEP 2 PHASE-Ex., WHEN FACING MOUNTING END (X)

| STEP | A | B | A\ | B\ | | CCW |
|------|---|---|----|----|---|-----|
| 1 | + | + | - | - | | ↑ |
| 2 | - | + | + | - | | |
| 3 | - | - | + | + | ↓ | ↑ |
| 4 | + | - | - | + | | |



| | | | |
|--|--|--|--|
| TEMPERATURE RISE: MAX.80°C (MOTOR STANDSTILL; FOR 2 PHASE ENERGIZED) | | | |
| AMBIENT TEMPERATURE -10~ 50°C [14°F ~ 122°F] | | | |
| INSULATION RESISTANCE 100 MOhm (UNDER NORMAL TEMPERATURE AND HUMIDITY) | | | |
| INSULATION CLASS B 130° [266°F] | | | |
| DIELECTRIC STRENGTH 500VAC FOR 1 MIN. (BETWEEN THE MOTOR COILS AND THE MOTOR CASE) | | | |
| AMBIENT HUMIDITY MAX. 85% (NO CONDENSATION) | | | |

| | | | | | | | | | | |
|-------|----------------------------|----------|------|---------------------------------------|--|----------------------------------|-----------|------------------------|---------------------|--------|
| 4 | change tolerance | 15.09.16 | A.S. | | APVD | S.R. | 04.11.10 | LINEAR ACTUATOR | | |
| 3 | change depth threaded hole | 21.07.15 | A.S. | | CHKD | | | | | |
| 2(3x) | UPDT. DATA | 22.09.14 | J.D. | Surface specification DIN ISO 1302 | General tolerances DIN ISO 2768- cH | Work piece edge DIN ISO 13715 | DRN | J.W. | 04.11.10 | DWG.NO |
| REV | DESCRIPTION | DATE | DRN | | | | SIGNATURE | DATE | L4118S1404-T6x1-A25 | |