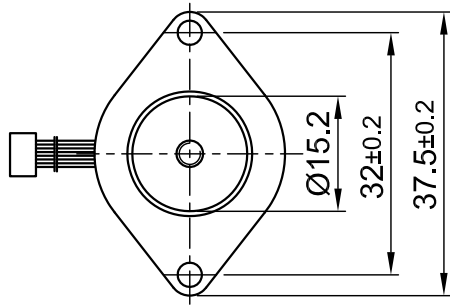
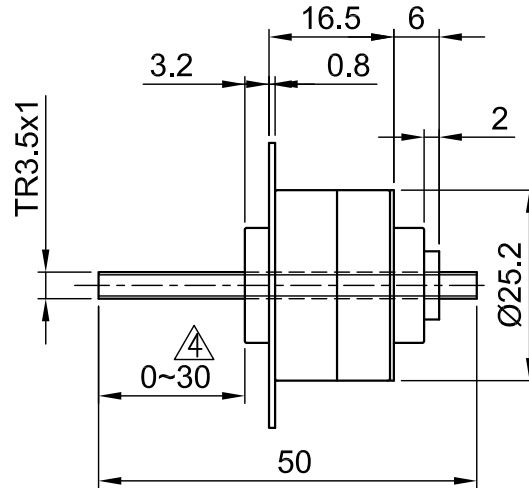


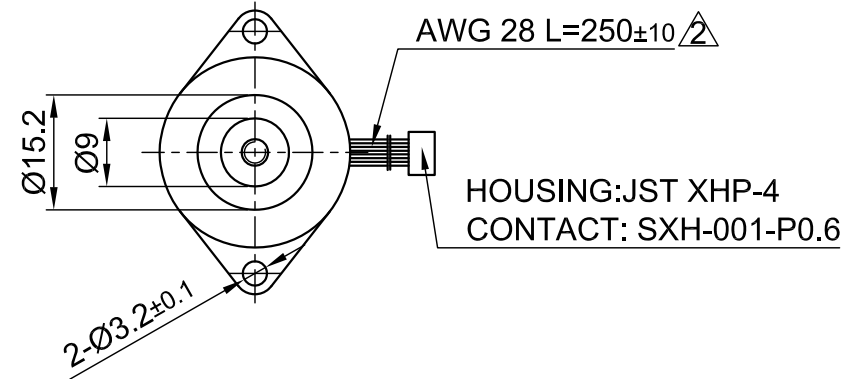
Front view and mounting



Side view



Rear view



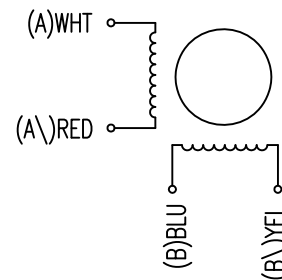
CONNECTION	
SPECIFICATION	
VOLTAGE (VDC)	5.0
AMPS/PHASE	0.1
RESISTANCE/PHASE (Ohms)@25°C	53 ±10%
INDUCTANCE/PHASE (mH) @1KHz	23 ±20% \triangle
STEP ANGLE (°)	15
RESOLUTION (mm/STEP)	0.0417
THRUST (N) @130Hz	5 \triangle \triangle
STROKE (mm)	30 \triangle
WEIGHT (Kg) [lb]	0.036 [0.079]
TEMPERATURE RISE: MAX.75°C (MOTOR STANDSTILL; FOR 2 PHASE ENERGIZED)	
AMBIENT TEMPERATURE -10°~ 40°C [14°F ~ 104°F] \triangle	
INSULATION RESISTANCE 100 MOhm (UNDER NORMAL TEMPERATURE AND HUMIDITY)	
INSULATION CLASS E 120° [248°F]	
DIELECTRIC STRENGTH 600VAC FOR 1 MIN. (BETWEEN THE MOTOR COILS AND THE MOTOR CASE)	
AMBIENT HUMIDITY MAX. 85% (NO CONDENSATION)	

FULL STEP 2 PHASE-Ex.,
WHEN FACING MOUNTING END (X)

STEP	A	B	A\	B\	CCW
1	+	+	-	-	↓ ↑
2	-	+	+	-	
3	-	-	+	+	↑ ↓
4	+	-	-	+	

TYPE OF CONNECTION (EXTERN)	MOTOR			
	BIPOLAR	CONNECTOR PIN NO.	LEADS	WINDING
A —	1	WHT	A	
A\ —	2	RED	A\	
B —	3	BLU	B	
B\ —	4	YEL	B\	

WIRING DIAGRAM



5	ADD INDUCTANCE	06.02.15	J.D.
4	NEW VALUE OF STROKE	30.08.12	J.W.
3	NEW VALUE OF THRUST AT 130HZ	28.02.11	J.W.
REV	DESCRIPTION	DATE	APVD



LP2515S0104-TR3.5x1

SCALE FREE	APVD	S.Ha.	23.07.07
X ±0.5	CHKD		
1PL ±0.2	DRN	J.W.	23.07.07
2PL ±0.1	SIGNATURE	DATE	
ANGLE ±30'			

LINEAR ACTUATOR

DWG.NO

LP2515S0104-TR3.5x1