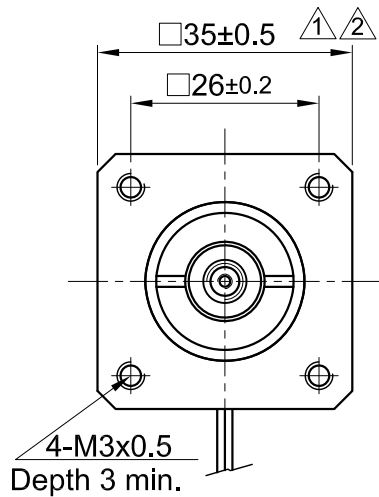
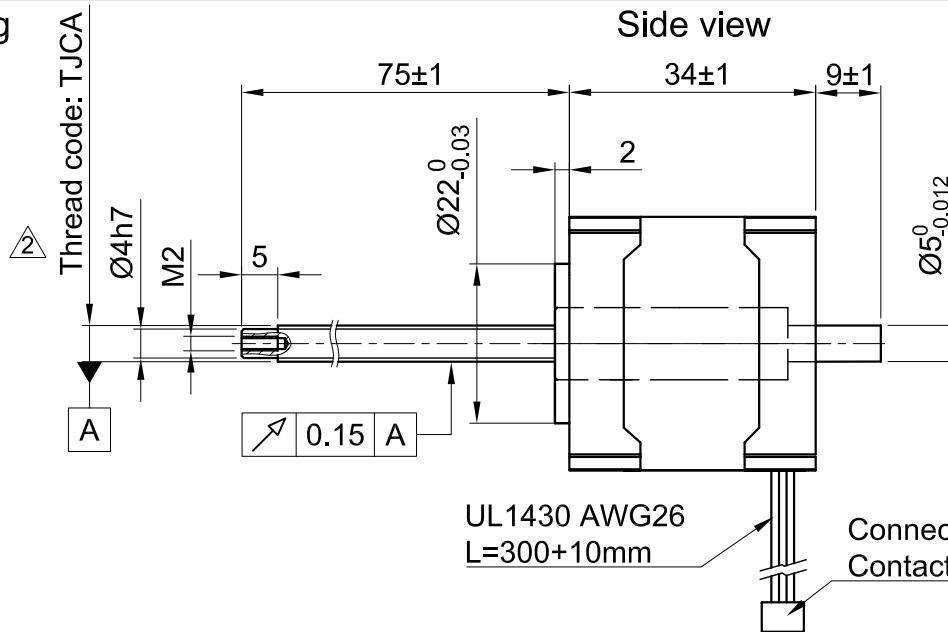


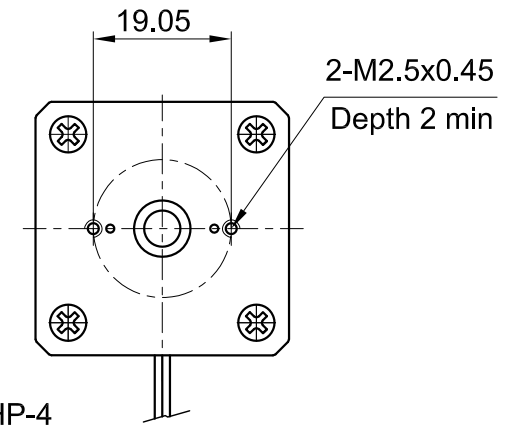
Front view and mounting



Side view



Rear view



CONNECTION	BIPOLAR
SPECIFICATION	
AMPS/PHASE	1.2
RESISTANCE/PHASE (Ohms)@25°C	1.85±15% \triangle
INDUCTANCE/PHASE (mH) @1KHz	2.0±20% \triangle
SPINDLE LEAD (mm) [in]	2 [0.0787] \triangle
THRUST (N) (lb)	160 [35.97] \triangle
RESOLUTION (mm/STEP)	0.01
STATIC THRUST(N)(NO CURRENT)	>160
MAX. SPEED (mm/sec.) at 48V	100
MAX. SPEED WITH MAX. TRUST (mm/sec.)	12
WEIGHT (Kg) [lb]	0.15[0.331]
TEMPERATURE RISE: MAX.80°C (MOTOR STANDSTILL; FOR 2 PHASE ENERGIZED)	
AMBIENT TEMPERATURE -10~ 50°C [14°F ~ 122°F]	
INSULATION RESISTANCE 100 MOhm (UNDER NORMAL TEMPERATURE AND HUMIDITY)	
INSULATION CLASS B 130° [266°F]	
DIELECTRIC STRENGTH 500VAC FOR 1 MIN. (BETWEEN THE MOTOR COILS AND THE MOTOR CASE)	
AMBIENT HUMIDITY MAX. 85% (NO CONDENSATION)	

Please regard the application noten at www.nanotec.com for further informations.

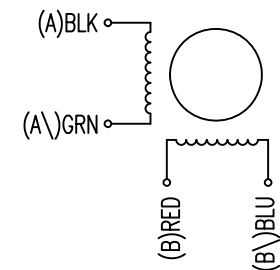
Shaft play is adjustable at the motor.

PIN NO	TYPE OF CONNECTION (EXTERN)		MOTOR	
	BIPOLAR	LEADS	WINDING	
1	A —	BLK	A	
2	A \	GRN	A \	
3	B —	RED	B	
4	B \	BLU	B \	

WIRING DIAGRAM

FULL STEP 2 PHASE-Ex., WHEN FACING MOUNTING END (X)

STEP	A	B	A \	B \	CCW	CW
1	+	+	-	-	↓	↑
2	-	+	+	-		
3	-	-	+	+	↓	↑
4	+	-	-	+		



2	Screw use TJCA, etc.	27.07.20	X T		APVD	S.R.	27.09.13	LINEAR ACTUATOR
1	rework draw/change tolerance	08.06.16	A.S.		CHKD			
A	-	29.11.13	J.D.	Surface specification DIN ISO 1302	DRN	J.W.	13.02.13	DWG.NO
REV	DESCRIPTION	DATE	DRN	General tolerances DIN ISO 2768-cH	SIGNATURE		DATE	LS3518S1204-T6x2-75
				Work piece edge DIN ISO 13715				