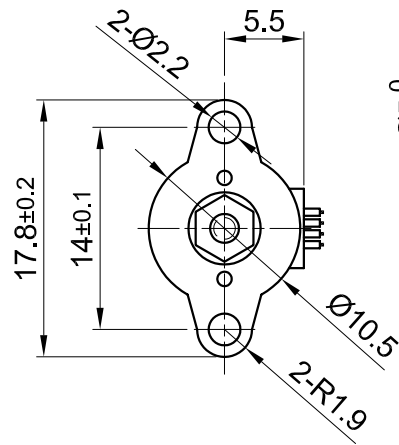
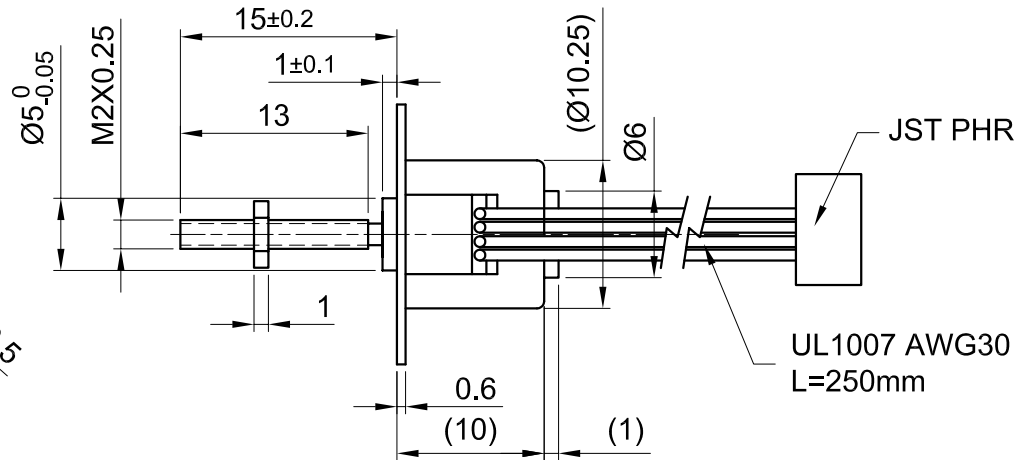


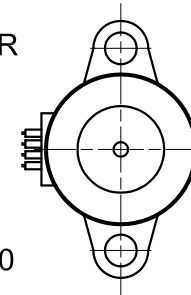
Front view and mounting



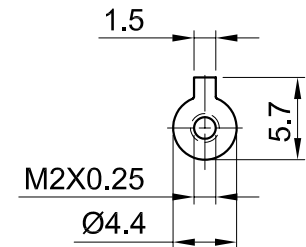
Side view



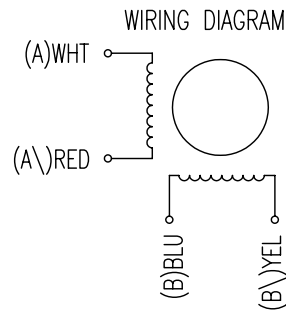
Rear view



Option (Holder with Nut)



CONNECTION	BIPOLAR
SPECIFICATION	
VOLTAGE (VDC)	3.3
AMPS/PHASE	0.22
RESISTANCE/PHASE (Ohms)@25°C	15±7%
INDUCTANCE/PHASE (mH) @1KHz	3.0
HOLDING TORQUE (Nm) [lb-in]	1.6x10 <sup>-3</sup> [1.4x10 <sup>-2</sup> ]
DETENT TORQUE (Nm) [lb-in]	4.8x10 <sup>-5</sup> [4.2x10 <sup>-4</sup> ]
STEP ANGLE (°)	18
STEP ACCURACY (NON-ACCUM)	±7%
ROTOR INERTIA (Kg-m <sup>2</sup> ) [lb-in <sup>2</sup> ]	1.0x10 <sup>-9</sup> [3.416x10 <sup>-6</sup> ]
WEIGHT (Kg) [lb]	0.0043 [0.0095]



TYPE OF CONNECTION (EXTERN)	MOTOR			
	BIPOLAR	CONNECTOR PIN NO.	LEADS	WINDING
A —	1	WHT	A	
A\ —	2	RED	A\	
B —	3	BLU	B	
B\ —	4	YEL	B\	

FULL STEP 2 PHASE-Ex.,  
WHEN FACING MOUNTING END (X)

STEP	A	B	A\	B\	CW	CCW
1	+	+	-	-	↓	↑
2	-	+	+	-	↓	↑
3	-	-	+	+	↓	↑
4	+	-	-	+	↓	↑

TEMPERATURE RISE: MAX.70°C (MOTOR STANDSTILL; FOR 2 PHASE ENERGIZED)	AXIAL-FORCE Fa (N)	Fa=1.0	
AMBIENT TEMPERATURE -20°~ 50°C [-4°F ~ 122°F]	DISTANCE a (mm)	1/2 SCHAFTLENGTH	
INSULATION RESISTANCE 100 MOhm (UNDER NORMAL TEMPERATURE AND HUMIDITY)	RADIAL-FORCE Fr (N)	Fr=2.0	
INSULATION CLASS E 120° [248°F]		AXIAL	RADIAL
DIELECTRIC STRENGTH 600VAC FOR 1 MIN. (BETWEEN THE MOTOR COILS AND THE MOTOR CASE)	SHAFT PLAY (mm)	n.a.	n.a.
AMBIENT HUMIDITY MAX. 85% (NO CONDENSATION)	AT LOAD MAX: (N)	n.a.	n.a.

REV	DESCRIPTION	DATE	APVD	NANOTEC:	SCALE	FREE	APVD	CHKD	DRN	SIGNATURE	DATE	DWG.NO
				LSP1018M0204-M2X0.25	X	±0.5				J.W.	11.05.07	LSP1018M0204-M2X0.25
					1PL	±0.2						
					2PL	±0.1						
					ANGLE	±30'						