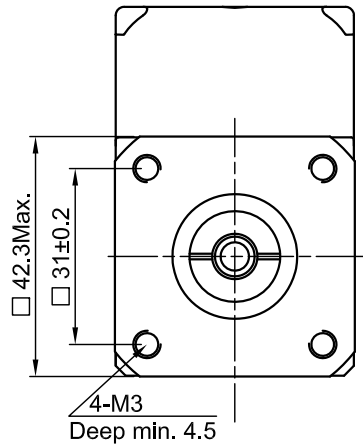
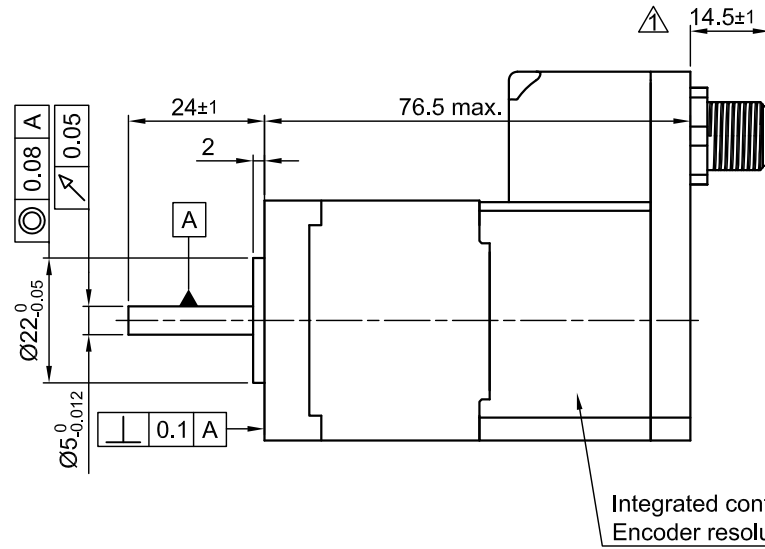


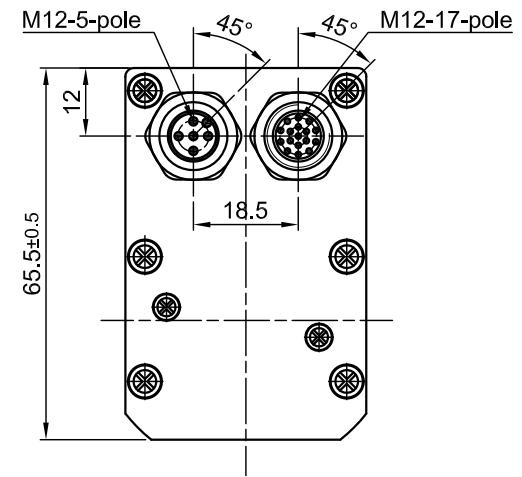
Front view and mounting



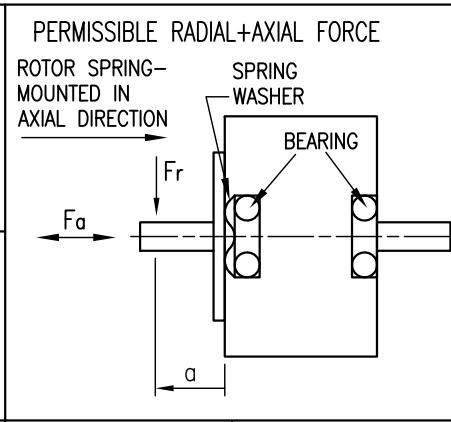
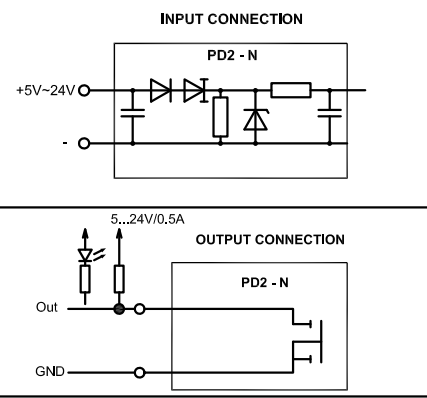
Side view



Rear view



SPECIFICATION	CONNECTION	BIPOLAR
VOLTAGE (VDC)		12 TO 48
AMPS/PHASE		UP TO 2.7A (100%=1.8A)
HOLDING TORQUE (Nm) [lb-in]		0.5 [4.425]
DETENT TORQUE (Nm) [lb-in]		0.022 [0.195]
STEP ANGLE (°) ± ACCURACY		1.8±5% TO MICROSTEP
WEIGHT (Kg) [lb]		0.5 [1.1]



M12 CONNECTOR 17 POLE	
Funktion	Pin No.
OUTPUT 1	1
OUTPUT 2	2
OUTPUT 3	3
ANALOG INPUT	4
+UB LOGIC	5
GND	6
CAN-H	7
CAN-L	10
GND	9
GND	8
INPUT 1	11
INPUT 2	12
INPUT 3	13
INPUT 4	14
INPUT 5	15
INPUT 6	16
GND	17

M12 CONNECTOR 5 POLE	
Funktion	Pin No.
12-48 V	1
12-48 V	2
POWER GND	3
POWER GND	4
N.C.	5

OVERTEMPERATURE PROTECTION (ELECTRONICS): 75°C
AMBIENT TEMPERATURE -10~ 50°C [14°F ~ 122°F]
INSULATION RESISTANCE 100 MOhm (UNDER NORMAL TEMPERATURE AND HUMIDITY)
INSULATION CLASS B 130° [266°F]
DIELECTRIC STRENGTH 500VAC FOR 1 MIN. (BETWEEN THE MOTOR COILS AND THE MOTOR CASE)
AMBIENT HUMIDITY MAX. 85% (NO CONDENSATION)

AXIAL-FORCE Fa (N)	Fr=7
DISTANCE a (mm)	20
RADIAL-FORCE Fr (N)	20
	AXIAL      RADIAL
SHAFT PLAY (mm)	0.1      0.02
AT LOAD MAX: (N)	30      4.5

FULL STEP 2 PHASE-Ex., WHEN FACING MOUNTING END (X)

STEP	A	B	A\	B\	CCW	CW
1	+	+	-	-	↓	↑
2	-	+	+	-	↓	↑
3	-	-	+	+	↓	↑
4	+	-	-	+	↓	↑

				SCALE FREE	APVD	G.S.	17.09.12	<h2>STEPPING MOTOR</h2>
				X ±0.5	1PL ±0.2	2PL ±0.1	ANGLE ±30'	
1	CHANGE HEIGHT OF M12	21.02.14	J.D.	PD2-N4118L1804-IP-3				DWG.NO PD2-N4118L1804-IP-3
REV	DESCRIPTION	DATE	APVD					