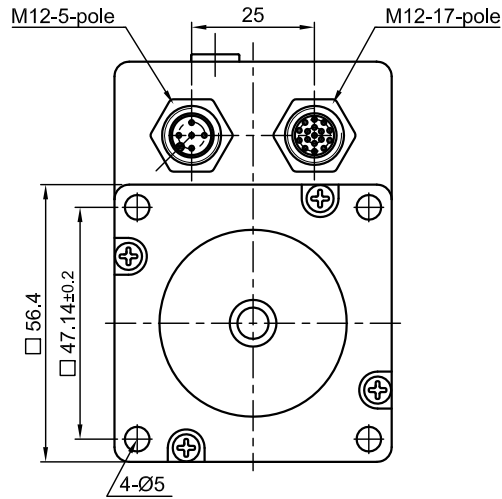
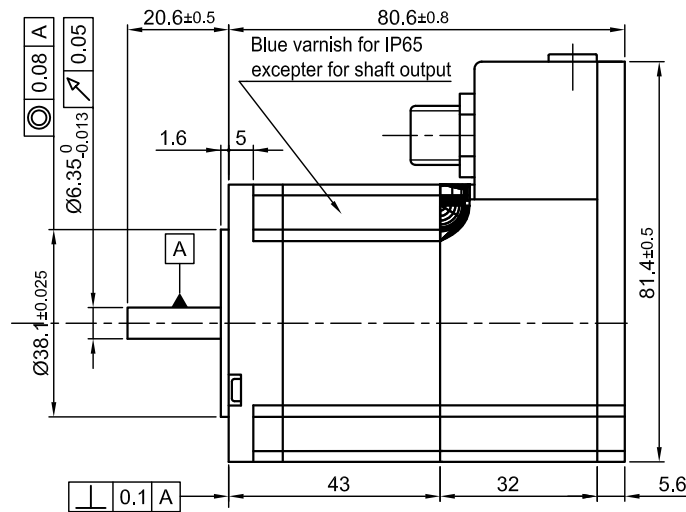


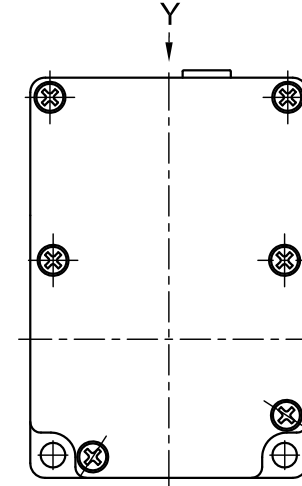
Front view and mounting



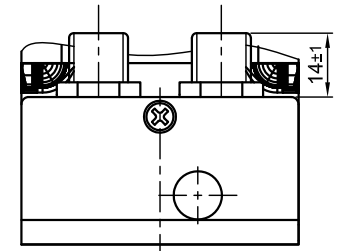
Side view



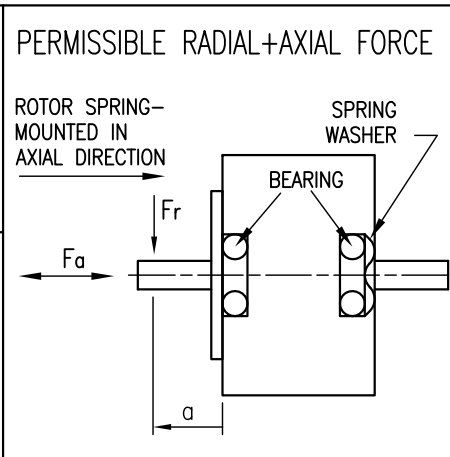
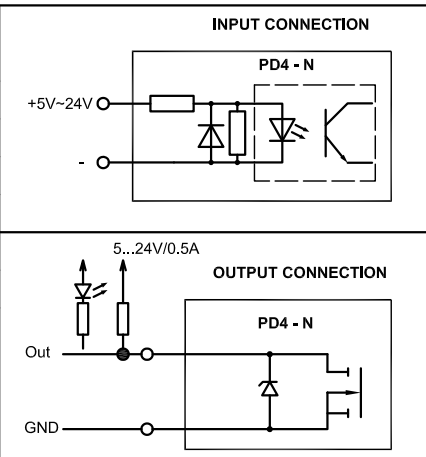
Rear view



Y view



SPECIFICATION	CONNECTION	BIPOLAR PARALLEL
SUPPLY VOLTAGE (VDC)		12 TO 48
AMPS/PHASE		* UP TO 4.8 (100%=3.2)
HOLDING TORQUE (Nm) [lb-in]		1.13 [10.0]
DETENT TORQUE (Nm) [lb-in]		0.04 [0.354]
STEP ANGLE (°) ± ACCURACY		* 1.8 TO MICROSTEP
WEIGHT (Kg) [lb]		0.8 [1.76]
* ADJUSTABLE WITH NANOPRO.		



M12 CONNECTOR 17 POLE	
Funktion	Pin No.
OUTPUT 1	1
OUTPUT 2	2
OUTPUT 3	3
ANALOG INPUT	4
+UB EXTERN	5
GND (W001)	6
CAN-H	7
CAN-L	10
N.C.	9
N.C.	8
INPUT 1	11
INPUT 2	12
INPUT 3	13
INPUT 4	14
INPUT 5	15
INPUT 6	16
NC	17

M12 CONNECTOR 5 POLE	
Funktion	Pin No.
12-48 V	1
12-48 V	2
POWER GND	3
POWER GND	4
N.C.	5

OVERTEMPERATURE PROTECTION (ELECTRONICS): 80°C	AXIAL-FORCE Fa (N)	Fa=10			
AMBIENT TEMPERATURE -10°~ 40°C [14°F ~ 104°F] (HIGHER TEMPERATURE REDUCES DUTY CYCLE)	DISTANCE a (mm)	5	10	15	20
INSULATION RESISTANCE 100 MOhm (UNDER NORMAL TEMPERATURE AND HUMIDITY)	RADIAL-FORCE Fr (N)	130	90	70	52
INSULATION CLASS B 130° [266°F]			AXIAL	RADIAL	
DIELECTRIC STRENGTH 500VAC FOR 1 MIN. (BETWEEN THE MOTOR COILS AND THE MOTOR CASE)	SHAFT PLAY (mm)	0.08		0.02	
AMBIENT HUMIDITY MAX. 85% (NO CONDENSATION)	AT LOAD MAX: (N)	4.5		4.5	

REV	DESCRIPTION	DATE	APVD	 Nanotec [®] PLUG & DRIVE	SCALE FREE	APVD	S.R.	02.03.12
					X ±0.5	CHKD		
				1PL ±0.2		DRN	J.W.	02.03.12
				2PL ±0.1				
				ANGLE ±30'		SIGNATURE		DATE

PLUG&DRIVE MOTOR	
DWG.NO	PD4-N5918M4204-IP-3