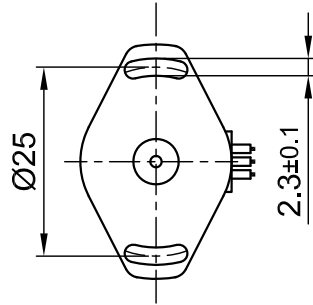
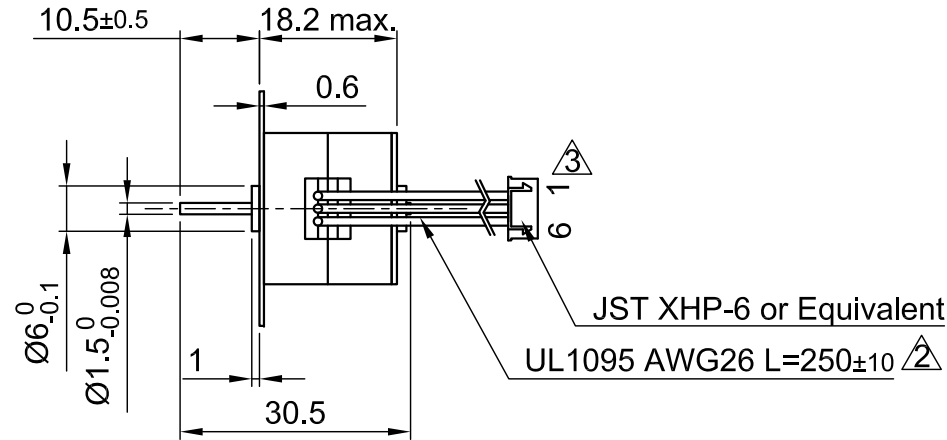


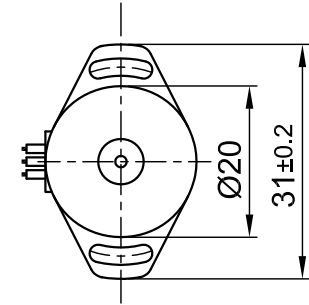
Front view and mounting



Side view



Rear view



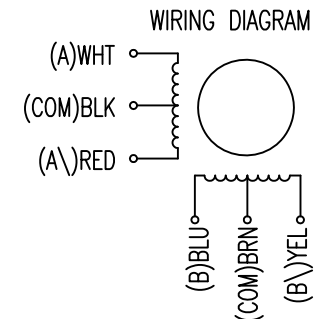
SPECIFICATION	UNIPOLAR OR BIPOLAR-1 WINDING	BIPOLAR SERIAL
VOLTAGE (VDC)	5.0	7.0
AMPS/PHASE	0.5	0.35
RESISTANCE/PHASE (Ohms)@25°C	10±10%	20±10%
INDUCTANCE/PHASE (mH) @1KHz	1.85±20%	7.4±20%
HOLDING TORQUE (Nm) [lb-in]	0.005 [0.041]	0.007 [0.058]
DETENT TORQUE (Nm) [lb-in]	1.5x10 <sup>-3</sup> [0.013]	
STEP ANGLE (°)	18	
STEP ACCURACY (NON-ACCUM)	±7%	
ROTOR INERTIA (Kg-m <sup>2</sup> ) [lb-in <sup>2</sup> ]	1.0x10 <sup>-7</sup> [3.416x10 <sup>-4</sup> ]	
WEIGHT (Kg) [lb]	0.026 [0.0573]	
TEMPERATURE RISE: MAX.80°C (MOTOR STANDSTILL; FOR 2 PHASE ENERGIZED)		
AMBIENT TEMPERATURE -10°~ 40°C [14°F ~ 104°F]		
INSULATION RESISTANCE 100 MOhm (UNDER NORMAL TEMPERATURE AND HUMIDITY)		
INSULATION CLASS E 120°C [248°F]		
DIELECTRIC STRENGTH 500VAC FOR 1 MIN. (BETWEEN THE MOTOR COILS AND THE MOTOR CASE)		
AMBIENT HUMIDITY MAX. 85% (NO CONDENSATION)		

TYPE OF CONNECTION (EXTERN)			MOTOR		
UNIPOLAR	BIPOLAR		CONNECTOR PIN NO.	LEADS	WINDING
	1WINDING	SERIAL			
A ---	A ---	A ---	1	WHT	A --- COM ---
COM ---	COM ---	COM ---	5	BLK	
A\ ---	A\ ---	A\ ---	3	RED	B --- COM ---
B ---	B ---	B ---	2	BLU	
COM ---	COM ---	COM ---	6	BRN	B\ --- COM ---
B\ ---	B\ ---	B\ ---	4	YEL	

for >speed ←---|  
for <speed ←---|

FULL STEP 2 PHASE-Ex.,  
WHEN FACING MOUNTING END (X)

STEP	A	B	A\	B\	CCW	CW
1	+	+	-	-	↓	↑
2	-	+	+	-		
3	-	-	+	+	↑	↓
4	+	-	-	+		



3	PIN 1 AND 6 INTERCHANGED	04.08.11	J.W.
2	CABLE TOLERANCE	06.04.10	J.W.
4	REMOVE LOAD SPEC.	28.02.14	J.D.
REV	DESCRIPTION	DATE	APVD



SP2018M0506-A

SCALE FREE	APVD	S.Ha.	12.03.07
X ±0.5	CHKD		
1PL ±0.2	DRN	J.W.	26.10.06
2PL ±0.1	SIGNATURE		
ANGLE ±30'	DATE		

STEPPING MOTOR

DWG.NO

SP2018M0506-A