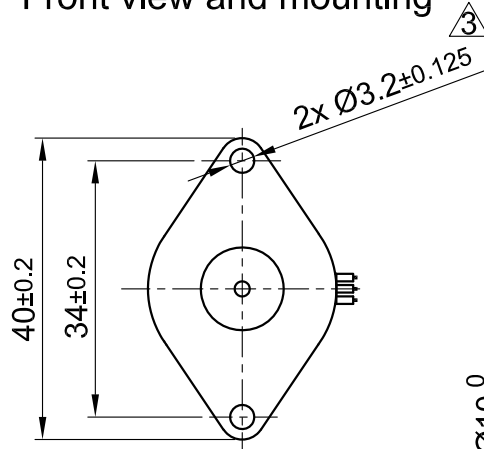
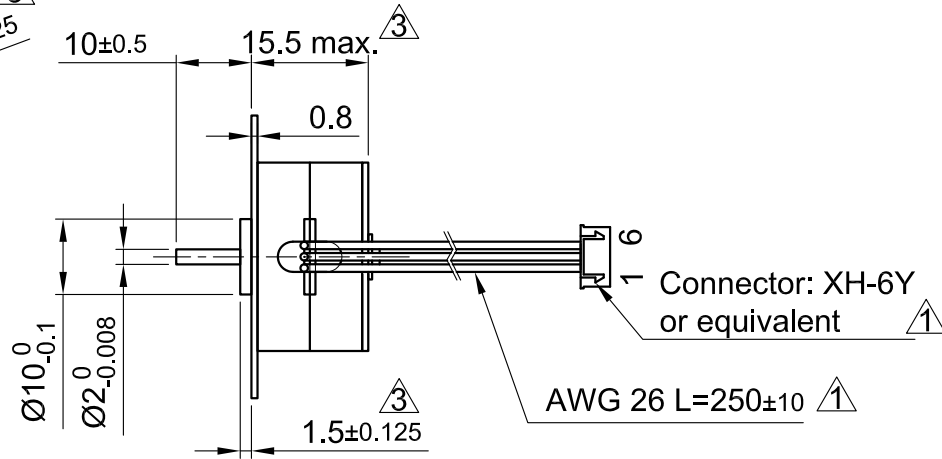


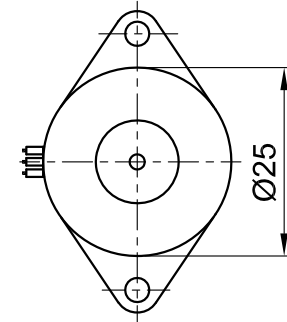
Front view and mounting



Side view



Rear view



SPECIFICATION	UNIPOLAR OR BIPOLAR-1 WINDING	BIPOLAR SERIES
VOLTAGE (VDC)	5.0	7.0
AMPS/PHASE	0.5	0.35
RESISTANCE/PHASE (Ohms)@25°C	10±10%	20±10%
INDUCTANCE/PHASE (mH) @1KHz	2.0±20%	△ 10.5±20%
HOLDING TORQUE (Nm) [lb-in]	0.008 [0.07] △	△ 0.012 [0.105]
DETENT TORQUE (Nm) [lb-in]	5.5x10 <sup>-3</sup> [0.048]	
STEP ANGLE (°)	7.5	
STEP ACCURACY (NON-ACCUM)	±8%	
ROTOR INERTIA (Kg-m <sup>2</sup> ) [lb-in <sup>2</sup> ]	1x10 <sup>-7</sup> [3.416x10 <sup>-4</sup> ]	
WEIGHT (Kg) [lb]	0.036 [0.079]	
TEMPERATURE RISE: MAX.80°C (MOTOR STANDSTILL; FOR 2 PHASE ENERGIZED)		
AMBIENT TEMPERATURE -10°~ 40°C [14°F ~ 104°F] △		
INSULATION RESISTANCE 100 MOhm (UNDER NORMAL TEMPERATURE AND HUMIDITY)		
INSULATION CLASS E 120°C [248°F] △		
DIELECTRIC STRENGTH 500VAC FOR 1 MIN. (BETWEEN THE MOTOR COILS AND THE MOTOR CASE)		
AMBIENT HUMIDITY MAX. 85% (NO CONDENSATION)		

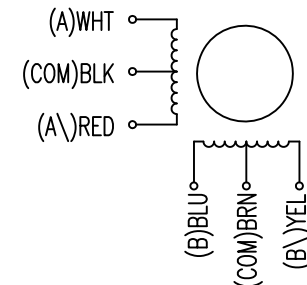
TYPE OF CONNECTION (EXTERN)			MOTOR		
UNIPOLAR	BIPOLAR		CONNECTOR PIN NO.	LEADS	WINDING
	1WINDING	SERIES			
A —	A —	A —	1	WHT	A
COM —	COM —		5	BLK	COM
A\ —		A\ —	3	RED	A\
B —	B —	B —	2	BLU	B
COM —	COM —		6	BRN	COM
B\ —		B\ —	4	YEL	B\

for >speed ← - - - |  
for <speed ← - - - |

FULL STEP 2 PHASE-Ex.,  
WHEN FACING MOUNTING END (X)

STEP	A	B	A\	B\	CCW	CW
1	+	+	-	-	↓	↑
2	-	+	+	-	↓	↑
3	-	-	+	+	↓	↑
4	+	-	-	+	↓	↑

WIRING DIAGRAM



4	change values	27.06.17	A.S.	 <b>Nanotec</b> PLUG & DRIVE	APVD	S.Ha.	12.03.07	<b>STEPPING MOTOR</b> DWG.NO SP2575M0506-A	
3	change tolerances	05.10.16	A.S.		CHKD				
2	REMOVE LOAD SPEC.	28.02.14	J.D.	Surface specification DIN ISO 1302	General tolerances DIN ISO 2768- cH	Work piece edge DIN ISO 13715	DRN	J.W.	08.11.06
REV	DESCRIPTION	DATE	DRN				SIGNATURE		DATE