

HIGH TORQUE HYBRID STEPPING MOTOR SPECIFICATIONS

General specifications		Electrical specifications	
Step Angle	1.8Deg±5%	Rated Voltage	4.4V
Number of phase	4	Rate Current	0.95A
Insulation resistance	100Mohm Min.(500V DC)	Resistance per phase	4.6±10%ohm
Insulation class	Class B	Inductance per phase	1.8±20%mh
Rotor inertia	18g.cm ²	Holding torque	900g.cm
Weight	0.2kg	Detent torque	g.cm

Wiring Diagram

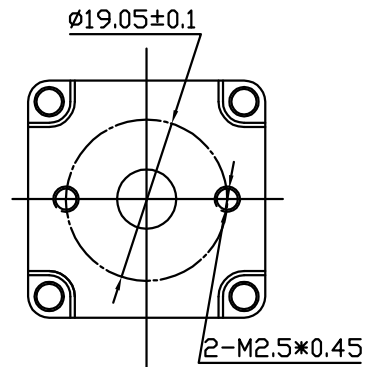
See from rear shaft

black A
yellow O
green C

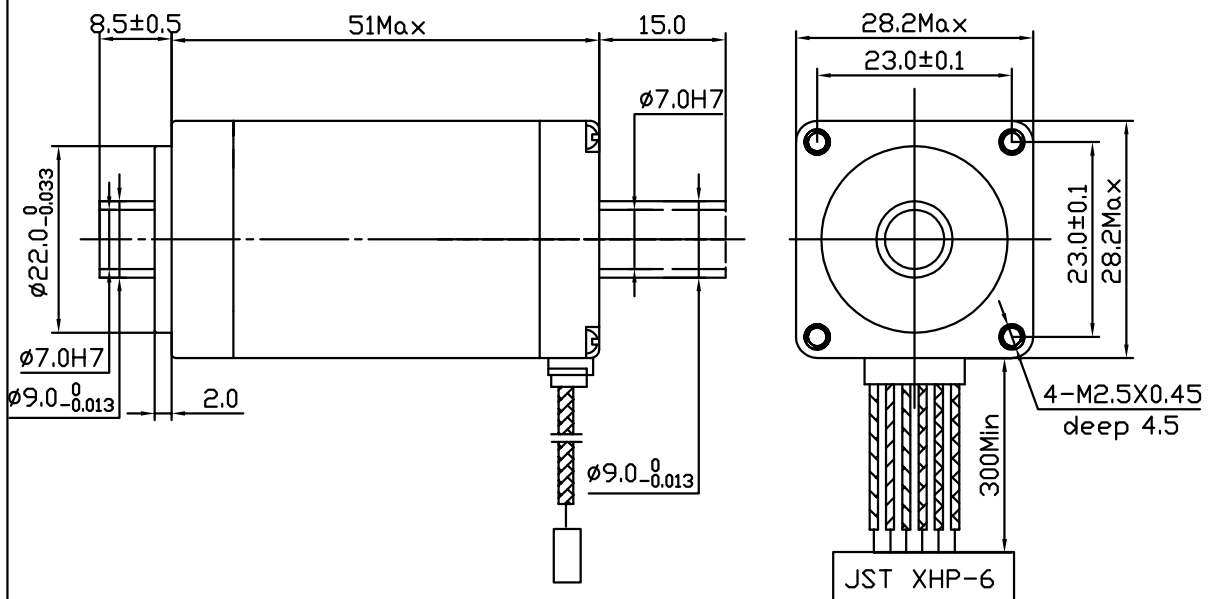


red B
white M
blue D

PIN#	LEADERS
1	BLACK
2	RED
3	GREEN
4	BLUE
5	YELLOW
6	WHITE



Dimension:



REV	QTY	NO.	SIG.	DT.
DESIGN				
CHECK				
APPROVE				

TITLE:
ST2818L1006-LA
SPECIFICATION

Nanotec