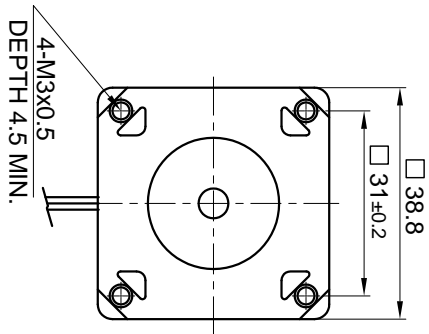
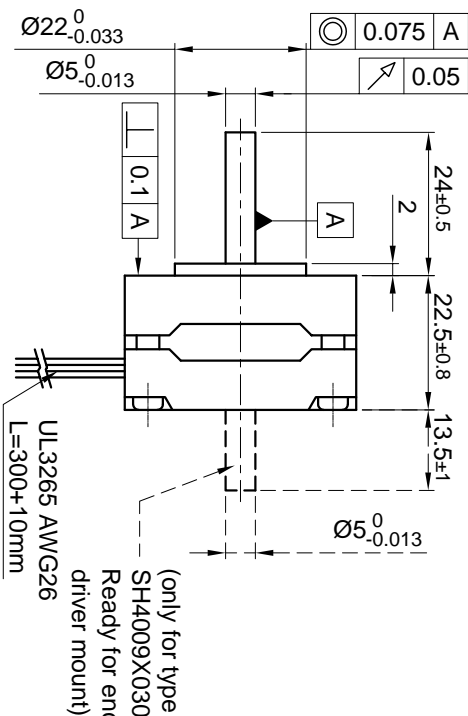


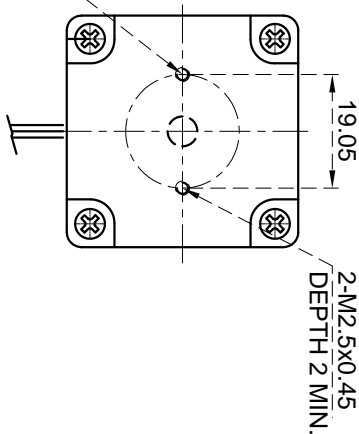
Front view and mounting



Side view

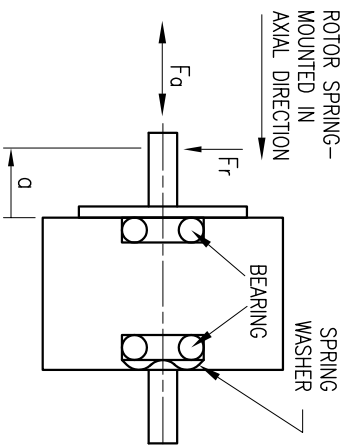


Rear view



SPECIFICATION	CONNECTION	BIPOLAR
VOLTAGE (VDC)		4.5
AMPS/PHASE		0.3
RESISTANCE/PHASE (Ohms)@25°C		15±15%
INDUCTANCE/PHASE (mH) @1KHz		8.5±20%
HOLDING TORQUE (Nm) [lb-in]		0.039 [0.345]
DETENT TORQUE (Nm) [lb-in]		2.0x10 ⁻³ [0.018]
STEP ANGLE (°)		0.9
STEP ACCURACY (NON-ACCUM)		±5%
ROTOR INERTIA (kg-m ²) [lb-in ²]		9.0x10 ⁻⁷ [3.074x10 ⁻⁵]
WEIGHT (kg) [lb]		0.12 [0.265]
TEMPERATURE RISE: MAX.80°C (MOTOR STANDSTILL; FOR 2 PHASE ENERGIZED)		
AMBIENT TEMPERATURE -10°~ 50°C [14°F ~ 122°F]		
INSULATION RESISTANCE 100 Mohm (UNDER NORMAL TEMPERATURE AND HUMIDITY)		
INSULATION CLASS B 130° [266°F]		
DIELECTRIC STRENGTH 500VAC FOR 1 MIN. (BETWEEN THE MOTOR COILS AND THE MOTOR CASE)		
AMBIENT HUMIDITY MAX. 85% (NO CONDENSATION)		

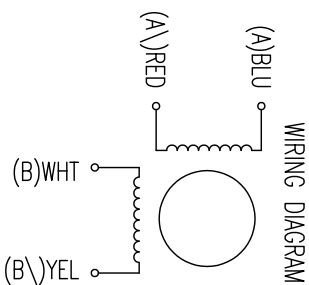
PERMISSIBLE RADIAL+AXIAL FORCE



TYPE OF CONNECTION (EXTERN)	MOTOR			
	LEADS		WINDING	
BIPOLAR	A	—	BLU	A
	A \	—	RED	A \
	B	—	WHT	B
	B \	—	YEL	B \

FULL STEP 2 PHASE-Ex,
WHEN FACING MOUNTING END (X)

STEP	A	B	A \	B \	CCW	CW
1	+	+	-	-	↑	↓
2	-	+	+	-	↓	↑
3	-	-	+	+	↑	↓
4	+	-	-	+	↓	↑



REV	DESCRIPTION	DATE	APVD

DESCRIPTION	DATE	APVD	SH4009X0304
NANOTEC:			

SCALE FREE	APVD	S.K.	07.06.06
X ±0.5	CHKD		
1PL ±0.2	DRN	J.W.	07.06.06
2PL ±0.1	SIGNATURE		
ANGLE ±30°	DATE		

STEPPING MOTOR		DWG.NO	SH4009X0304
----------------	--	--------	-------------