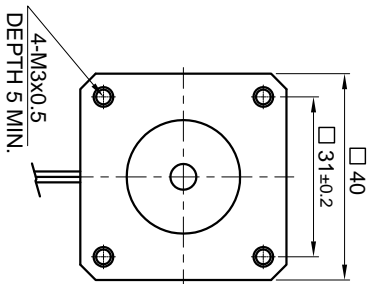
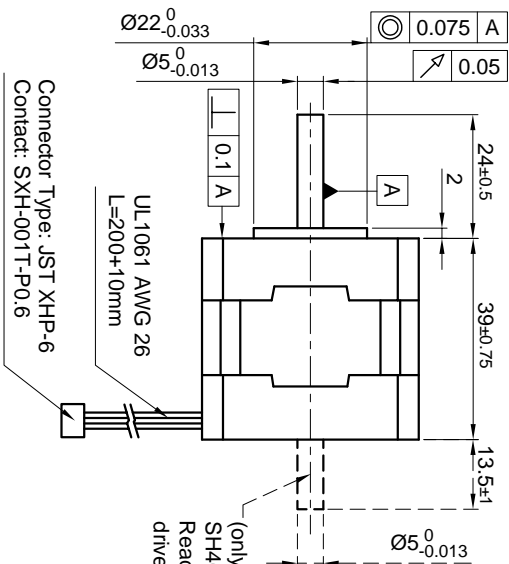


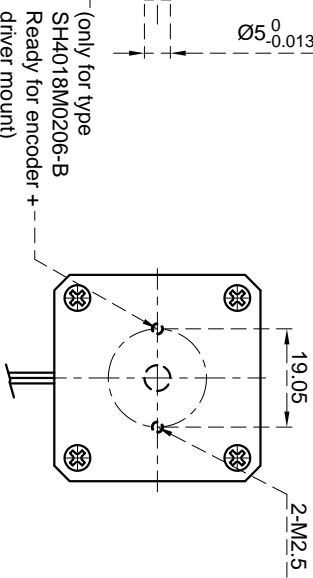
Front view and mounting



Side view



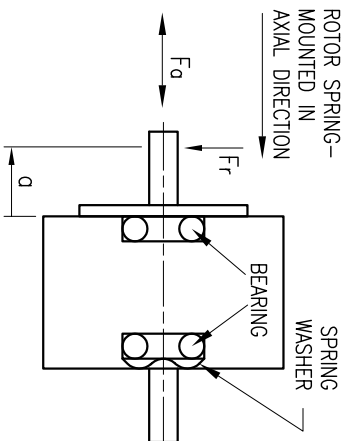
Rear view



Connector Type: JST XHP-6
Contact: SXH-0011T-P0.6

CONNECTION	UNIPOLAR OR BIPOLAR-1 WINDING	BIPOLAR SERIAL
SPECIFICATION		
VOLTAGE (VDC)	24	33.9
AMPS/PHASE	0.24	0.17
RESISTANCE/PHASE (Ohms)@25°C	100±15%	200±15%
INDUCTANCE/PHASE (mH) @1KHz	105±20%	420±20%
HOLDING TORQUE (Nm) [lb-in]	0.16 [1.416]	0.226 [2.0]
DETENT TORQUE (Nm) [lb-in]		4.8x10 ⁻³ [0.0425]
STEP ANGLE (°)		1.8
STEP ACCURACY (NON-ACCUM)		±5%
ROTOR INERTIA (Kg-m ²) [lb-in ²]		2.5x10 ⁻⁶ [8.54x10 ⁻³]
WEIGHT (Kg) [lb]		0.22 [0.485]
TEMPERATURE RISE: MAX.80°C (MOTOR STANDSTILL; FOR 2 PHASE ENERGIZED)		
AMBIENT TEMPERATURE -10°~ 50°C [14°F ~ 122°F]		
INSULATION RESISTANCE 100 Mohm (UNDER NORMAL TEMPERATURE AND HUMIDITY)		
INSULATION CLASS B 130° [266°F]		
DIELECTRIC STRENGTH 500VAC FOR 1 MIN. (BETWEEN THE MOTOR COILS AND THE MOTOR CASE)		
AMBIENT HUMIDITY MAX. 85% (NO CONDENSATION)		

PERMISSIBLE RADIAL+AXIAL FORCE



AXIAL-FORCE Fa (N)	FR	FR	FR	FR
DISTANCE a (mm)	5	10	15	20
RADIAL-FORCE Fr (N)	58	36	26	20
SHAFT PLAY (mm)	0.075	0.025		
AT LOAD MAX: (N)	10	5.0		

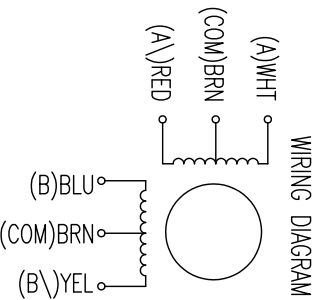
REV	DESCRIPTION	DATE	APVD	NANOTEC:	SH4018M0206
-----	-------------	------	------	----------	-------------

TYPE OF CONNECTION (EXTERN)	MOTOR	
	UNIPOLAR	BIPOLAR
A --- COM	A --- COM	A --- COM
B --- COM	B --- COM	B --- COM
A \ COM	A \ COM	A \ COM
B \ COM	B \ COM	B \ COM
CONNECTOR PIN NO.	1	2
LEADS	WHT	BLU
	BRN	RED
	5	3
	6	4
	YEL	
WINDING	A --- COM	A \ COM
	B --- COM	B \ COM

for >speed ←
for <speed →

FULL STEP 2 PHASE-EX., WHEN FACING MOUNTING END (X)

STEP	A	B	A \	B \	CCW
1	+	+	-	-	↑
2	-	+	+	-	↑
3	-	-	+	+	↓
4	+	-	-	+	↓



SCALE FREE	APVD	S.K.	04.07.06	STEPPING MOTOR
X ±0.5 1pL ±0.2 2pL ±0.1 ANGLE ±30°	CHKD	J.W.	04.07.06	
	DRN			DWG:NO
	SIGNATURE			SH4018M0206