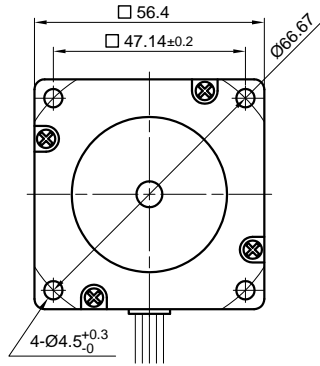
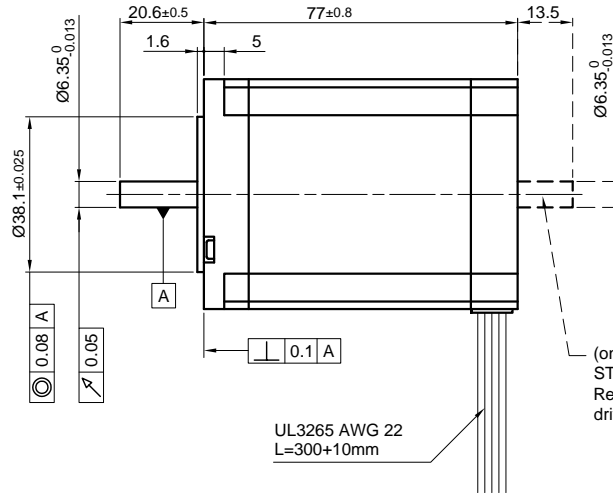


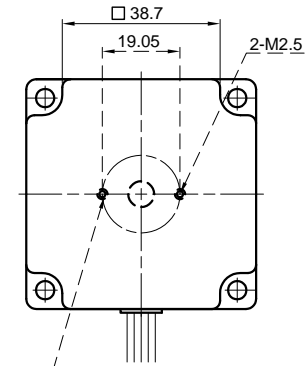
Front view and mounting



Side view



Rear view

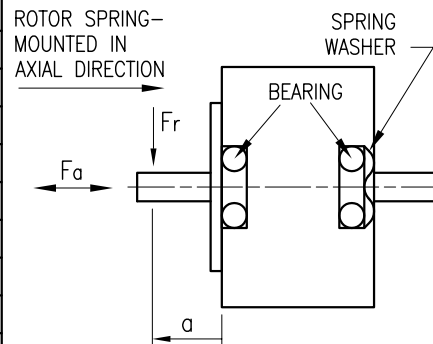


UL3265 AWG 22
L=300+10mm

(only for type ST5818L1008-B
Ready for encoder + driver mount)

SPECIFICATION	CONNECTION	UNIPOLAR OR BIPOLAR-1 WINDING	BIPOLAR	
			SERIAL	PARALLEL
VOLTAGE (VDC)		8.8		
AMPS/PHASE		1.0	0.71	1.41
RESISTANCE/PHASE (Ohms)@25°C		8.8±15%	17.6±15%	4.4±15%
INDUCTANCE/PHASE (mH) @1KHz		19±20%	76±20%	19±20%
HOLDING TORQUE (Nm) [lb-in]		1.2 [10.62]	1.7 [15.05]	1.7 [15.05]
DETENT TORQUE (Nm) [lb-in]		0.049 [0.434]		
STEP ANGLE (°)		1.8		
STEP ACCURACY (NON-ACCUM)		±5%		
ROTOR INERTIA (Kg-m ²) [lb-in ²]		0.43x10 ⁻⁴ [0.147]		
WEIGHT (Kg) [lb]		1.1 [2.426]		
TEMPERATURE RISE: MAX.80°C (MOTOR STANDSTILL; FOR 2 PHASE ENERGIZED)				
AMBIENT TEMPERATURE -10~ 50°C [14°F ~ 122°F]				
INSULATION RESISTANCE 100 MOhm (UNDER NORMAL TEMPERATURE AND HUMIDITY)				
INSULATION CLASS B 130° [266°F]				
DIELECTRIC STRENGTH 500VAC FOR 1 MIN. (BETWEEN THE MOTOR COILS AND THE MOTOR CASE)				
AMBIENT HUMIDITY MAX. 85% (NO CONDENSATION)				

PERMISSIBLE RADIAL+AXIAL FORCE



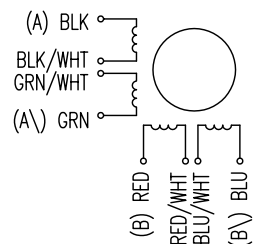
	AXIAL-FORCE Fa (N)	
	Fa=10	
DISTANCE a (mm)	5	10
RADIAL-FORCE Fr (N)	130	90
	AXIAL	RADIAL
SHAFT PLAY (mm)	0.075	0.025
AT LOAD MAX: (N)	10	5.0

	TYPE OF CONNECTION (EXTERN)			MOTOR	
	UNIPOLAR	BIPOLAR		LEADS	WINDING
A	A	A	A	BLK	A
COM				BLK/WHT	
A\		A\	A\	GRN/WHT	A\
B	B	B	B	GRN	B
COM				RED	
B\		B\	B\	RED/WHT	B\
				BLU/WHT	
				BLU	

FULL STEP 2 PHASE-Ex., WHEN FACING MOUNTING END (X)

STEP	A	B	A\	B\	CCW	CW
1	+	+	-	-	↓	↑
2	-	+	+	-	↓	↑
3	-	-	+	+	↓	↑
4	+	-	-	+	↓	↑

WIRING DIAGRAM



REV	DESCRIPTION	DATE	APVD	NANOTEC:	SCALE FREE	APVD	S.Ha.	16.01.07	STEPPING MOTOR
				ST5818L1008	X ±0.5	CHKD			
					1PL ±0.2	DRN	J.W.	26.04.06	
					2PL ±0.1	SIGNATURE		DWG.NO	
					ANGLE ±30'	DATE		ST5818L1008	