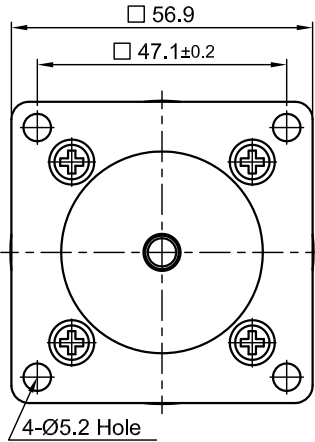
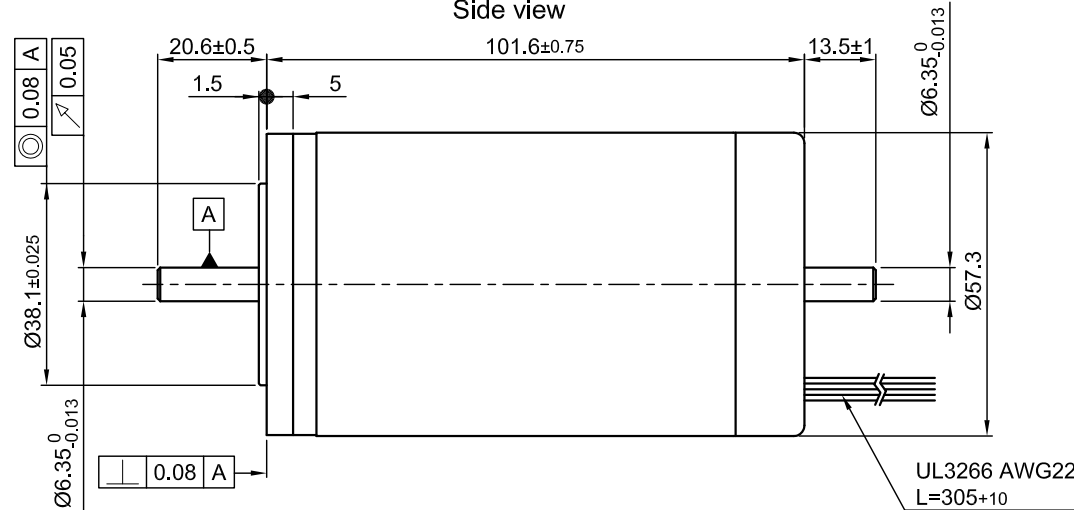


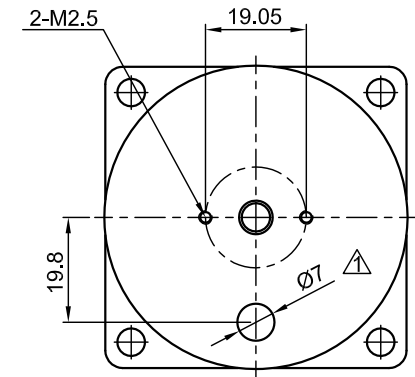
Front view and mounting



Side view

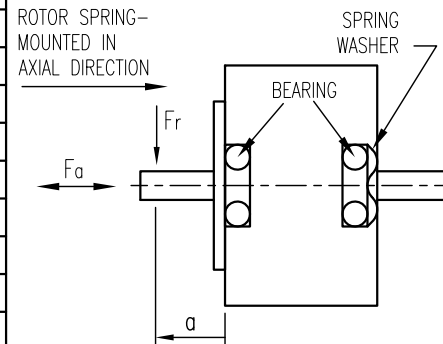


Rear view



SPECIFICATION	CONNECTION	STAR
NO. OF POL./PHASE	4/3	△
VOLTAGE RATED (VDC)	24	
CURRENT RATED/PEAK (AMP)	6.5/25.3	△
RESISTANCE/PHASE TO PHASE (Ohms) @25°C	0.44±10%	△
INDUCTANCE/PHASE TO PHASE (mH) @1KHz	0.76±30%	△
TORQUE RATED/PEAK (Nm) [lb-in]	0.37/1.34 [3.275/11.86]	
TORQUE/VOLTAGE CONSTANT (Nm/A)/[(V/red/sec)]	0.063/0.063	
POWER RATED (W)	110	△
SPEED RATED/NO LOAD (U/min)	2800/3600	
ROTOR INERTIA (Kg-m <sup>2</sup> ) [lb-in <sup>2</sup> ]	5.0x10 <sup>-5</sup> [0.171]	
WEIGHT (Kg) [lb]	1.5 [3.31]	
TEMPERATURE RISE: MAX.80°C		
AMBIENT TEMPERATURE -10°~ 50°C [14°F ~ 122°F]		
INSULATION RESISTANCE 100 MOhm (UNDER NORMAL TEMPERATURE AND HUMIDITY)		
INSULATION CLASS B 130° [266°F]		
DIELECTRIC STRENGTH 500VAC FOR 1 MIN. (BETWEEN THE MOTOR COILS AND THE MOTOR CASE)		
AMBIENT HUMIDITY MAX. 85% (NO CONDENSATION)		

PERMISSIBLE RADIAL+AXIAL FORCE



AXIAL-FORCE Fa (N)	Fa=10			
DISTANCE a (mm)	5	10	15	20
RADIAL-FORCE Fr (N)	130	90	70	52
	AXIAL	RADIAL		
SHAFT PLAY (mm)	0.075	0.025		
AT LOAD MAX: (N)	10.0	5.0		

WIRING DIAGRAM									
	PIN	COLOR	FUNCTION	Dir. ← →					
MOTOR 4 POL. △	6	BLU	U	X	HI	HI	X	LOW	LOW
	7	WHT	V	HI	X	LOW	LOW	X	HI
	8	BRN	W	LOW	LOW	X	HI	HI	X
HALL 12 IMPL. REV. △	1	ORG	+5V						
	2	YEL	H1	0	0	0	1	1	1
	3	GRY	H2	0	1	1	1	0	0
	4	GRN	H3	1	1	0	0	0	1
	5	BLK	GND						

STAR CONNECTION			
PHASE A	BLU		
PHASE B	WHT		
PHASE C	BRN		

4	IMPROVE VALUE	29.10.14	A.S.
3(3x)	MODIFY PHASE/POLE INFO	21.07.14	J.D.
2	PIN FOR ENCODER REMOTE	06.04.10	J.W.
REV	DESCRIPTION	DATE	APVD



DB57C01

SCALE	FREE	APVD	S.Ha.	19.06.07
X	±0.5	CHKD		
1PL	±0.2	DRN	J.W.	18.10.06
2PL	±0.1	SIGNATURE		DATE
ANGLE	±30'			

BRUSHLESS DC MOTOR

DWG.NO

DB57C01