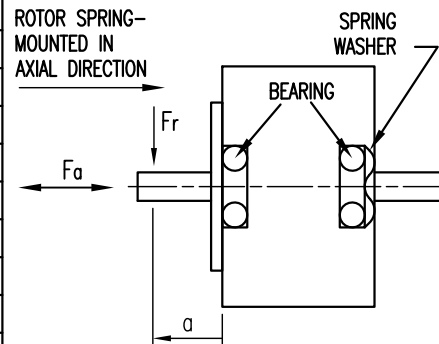


SPECIFICATION	CONNECTION	STAR
NO. OF POL./PHASE	4/3	△
VOLTAGE RATED/PEAK (VDC)	24	
CURRENT RATED/PEAK (AMP)	4.67/17.67	
RESISTANCE/PHASE TO PHASE (Ohms) @25°C	0.8±15%	
INDUCTANCE/PHASE TO PHASE (mH) @1KHz	1.05±20%	
TORQUE RATED/PEAK (Nm) [lb-in]	0.28/1.06 [2.478/9.381]	
TORQUE/VOLTAGE CONSTANT (Nm/A)/[(V/red/sec)]	0.06/0.06	
POWER RATED (W)	75	
SPEED RATED/NO LOAD (U/min)	2740/3700	
ROTOR INERTIA (Kg-m ²) [lb-in ²]	3.3x10 ⁻⁵ [0.113]	
WEIGHT (Kg) [lb]	1.1 [2.43]	
TEMPERATURE RISE: MAX.80°C		
AMBIENT TEMPERATURE -10°~ 50°C [14°F ~ 122°F]		
INSULATION RESISTANCE 100 MOhm (UNDER NORMAL TEMPERATURE AND HUMIDITY)		
INSULATION CLASS B 130° [266°F]		
DIELECTRIC STRENGTH 500VAC FOR 1 MIN. (BETWEEN THE MOTOR COILS AND THE MOTOR CASE)		
AMBIENT HUMIDITY MAX. 85% (NO CONDENSATION)		

PERMISSIBLE RADIAL+AXIAL FORCE



AXIAL-FORCE Fa (N)	Fa=10			
DISTANCE a (mm)	5	10	15	20
RADIAL-FORCE Fr (N)	130	90	70	52
	AXIAL	RADIAL		
SHAFT PLAY (mm)	0.075	0.025		
AT LOAD MAX: (N)	10.0	5.0		

WIRING DIAGRAM									
	PIN	COLOR	FUNCTION	Dir. →					
MOTOR 4 POL. △	6	BLU	U	X	HI	HI	X	LOW	LOW
	7	WHT	V	HI	X	LOW	LOW	X	HI
	8	BRN	W	LOW	LOW	X	HI	HI	X
HALL 12 IMPL. REV. △	1	ORG	+5V						
	2	YEL	H1	0	0	0	1	1	1
	3	GRY	H2	0	1	1	1	0	0
	4	GRN	H3	1	1	0	0	0	1
	5	BLK	GND						
STAR CONNECTION									
△									

3	REMOVE ENCODER ASSIGM.	25.07.14	J.D.
2(3x)	MODIFY PHASE/POLE INFO	21.07.14	J.D.
1	Bohrungsdurchmesser	20.02.08	J.W.
REV	DESCRIPTION	DATE	APVD



DB57L01

SCALE FREE	APVD	S.Ha.	19.06.07
X ±0.5	CHKD		
1PL ±0.2	DRN	J.W.	18.10.06
2PL ±0.1	SIGNATURE		
ANGLE ±30°	DATE		

BRUSHLESS DC MOTOR

DWG.NO

DB57L01