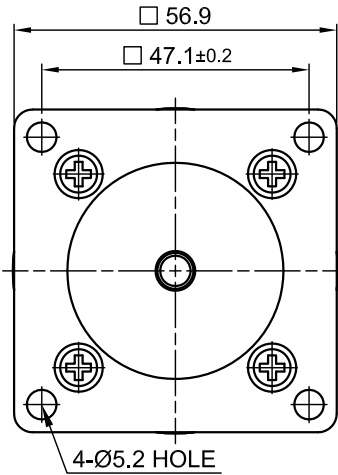
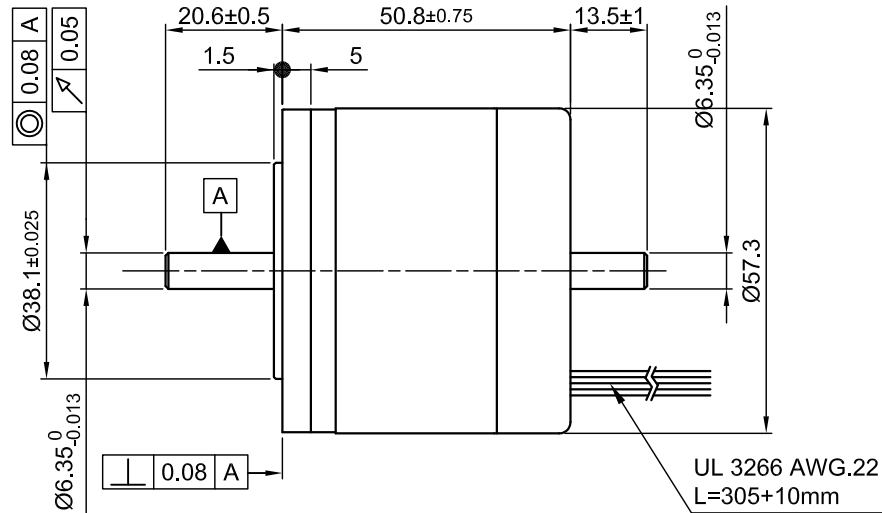


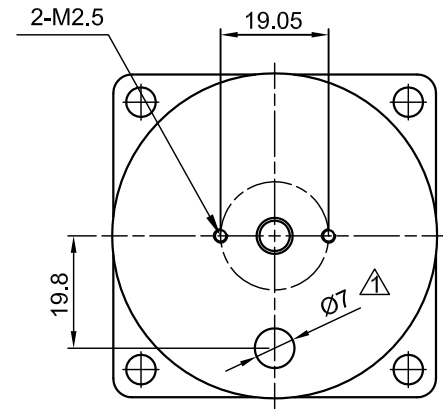
Front view and mounting



Side view

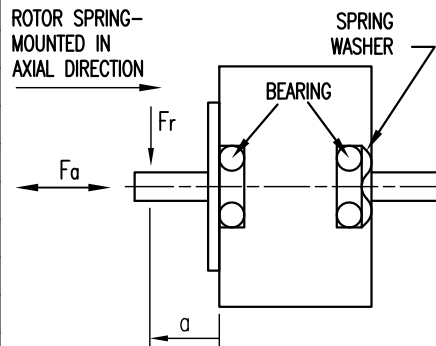


Rear view



SPECIFICATION	CONNECTION	STAR
NO. OF POL./PHASE	4/3	Δ
VOLTAGE RATED (VDC)	24	
CURRENT RATED/PEAK (AMP)	3.58/10.57	
RESISTANCE/PHASE TO PHASE (Ohms) @25°C	1.5±15%	
INDUCTANCE/PHASE TO PHASE (mH) @1KHz	1.53±20%	
TORQUE RATED/PEAK (Nm) [lb-in]	0.19/0.56 [1.682/4.956]	
TORQUE/VOLTAGE CONSTANT (Nm/A)/[(V/red/sec)]	0.053/0.053	
POWER RATED (W)	50	
SPEED RATED/NO LOAD (U/min)	2700/4400	
ROTOR INERTIA (Kg-m ²) [lb-in ²]	2.0x10 ⁻⁵ [0.068]	
WEIGHT (Kg) [lb]	0.6 [1.323]	
TEMPERATURE RISE: MAX.80°C		
AMBIENT TEMPERATURE -10°~ 50°C [14°F ~ 122°F]		
INSULATION RESISTANCE 100 MOhm (UNDER NORMAL TEMPERATURE AND HUMIDITY)		
INSULATION CLASS B 130° [266°F]		
DIELECTRIC STRENGTH 500VAC FOR 1 MIN. (BETWEEN THE MOTOR COILS AND THE MOTOR CASE)		
AMBIENT HUMIDITY MAX. 85% (NO CONDENSATION)		

PERMISSIBLE RADIAL+AXIAL FORCE



AXIAL-FORCE Fa (N)	Fa=10			
DISTANCE a (mm)	5	10	15	20
RADIAL-FORCE Fr (N)	130	90	70	52
	AXIAL	RADIAL		
SHAFT PLAY (mm)	0.075	0.025		
AT LOAD MAX: (N)	10.0	5.0		

WIRING DIAGRAM									
	PIN	COLOR	FUNCTION	Dir. \longleftrightarrow					
MOTOR 4 POL. Δ	6	BLU	U	X	HI	HI	X	LOW	LOW
	7	WHT	V	HI	X	LOW	LOW	X	HI
	8	BRN	W	LOW	LOW	X	HI	HI	X
HALL 12 IMPL. REV. Δ	1	ORG	+5V						
	2	YEL	H1	0	0	0	1	1	1
	3	GRY	H2	0	1	1	1	0	0
	4	GRN	H3	1	1	0	0	0	1
	5	BLK	GND						

STAR CONNECTION			
Δ	PHASE A	BLU	
	PHASE B	WHT	
	PHASE C	BRN	

3	REMOVE ENCODER ASSIGM.	25.07.14	J.D.
2(x)	MODIFY PHASE/POLE INFO	21.07.14	J.D.
1	Bohrungsdurchmesser	20.02.08	J.W.
REV	DESCRIPTION	DATE	APVD



DB57S01

SCALE FREE	APVD	S.Ha.	19.06.07
X ±0.5	CHKD		
1PL ±0.2	DRN	J.W.	18.10.06
2PL ±0.1	SIGNATURE	DATE	
ANGLE ±30°			

BRUSHLESS DC MOTOR	
DWG.NO	DB57S01