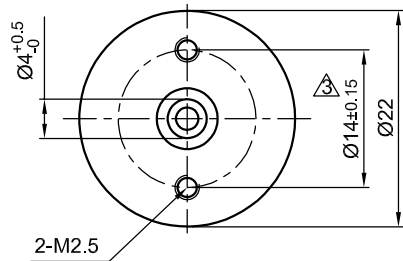
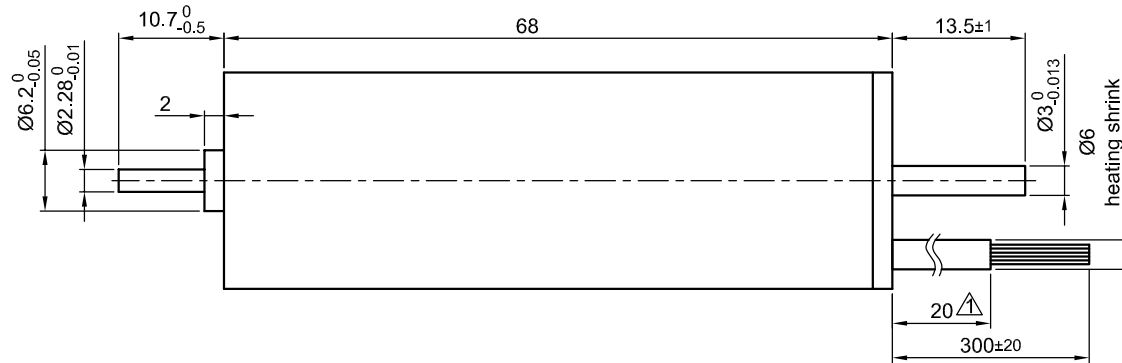


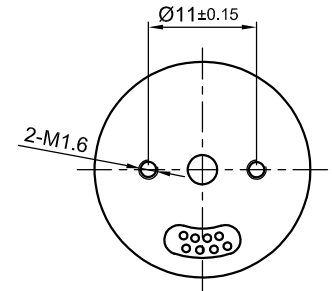
Front view and mounting



Side view

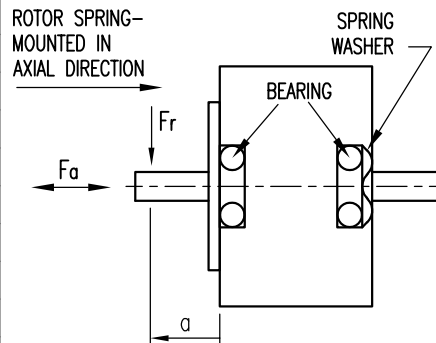


Rear view



SPECIFICATION	CONNECTION	STAR
NO OF POLES/PHASE		8/3
VOLTAGE RATED (VDC)		24
CURRENT RATED/PEAK (AMP)		0.62/1.6
RESISTANCE/PHASE TO PHASE (Ohms) @25°C		11.6±15%
INDUCTANCE/PHASE TO PHASE (mH) @1KHz		4.3±20%
TORQUE RATED/PEAK (Nm) [lb.in]		0.02/0.06 [0.177/0.532]
TORQUE CONSTANT (Nm/A) [lb.in/A]		0.0355 [0.314]
POWER RATED/PEAK (W)		7.4/8.5
SPEED RATED/NO LOAD (RPM)		3500/6000
ROTOR INERTIA (Kg-m <sup>2</sup> ) [lb-in <sup>2</sup> ]		1.32x10 <sup>-7</sup> [4.5x10 <sup>-4</sup> ]
WEIGHT (Kg) [lb]		0.128 [0.283]
TEMPERATURE RISE: MAX.80°C (MOTOR STANDSTILL; FOR 2 PHASE ENERGIZED)		
AMBIENT TEMPERATURE -10°~ 50°C [14°F ~ 122°F]		
INSULATION RESISTANCE ??? MOhm (UNDER NORMAL TEMPERATURE AND HUMIDITY)		
INSULATION CLASS B 130° [266°F]		
DIELECTRIC STRENGTH 500VAC FOR 5 SEC. (BETWEEN THE MOTOR COILS AND THE MOTOR CASE)		
AMBIENT HUMIDITY MAX. 85% (NO CONDENSATION)		

PERMISSIBLE RADIAL+AXIAL FORCE



AXIAL-FORCE Fa (N)	Fr=2	
DISTANCE a (mm)	10	
RADIAL-FORCE Fr (N)	10	
	AXIAL	RADIAL
SHAFT PLAY (mm)	0.08	0.02
AT LOAD MAX: (N)	4.5	4.5

WIRING DIAGRAM

	PIN	COLOR	FUNCTION	DESCRIPTION	LEAD GAUGE
MOTOR 8 POL.	6	RED	U		UL1007 AWG 26
	7	BRN	V		
	8	BLK	W		
HALL 24 IMPL. REV.	1	BLU	Vcc	SUPPLY VOLTAGE FOR HALL SENSORS	UL1007 AWG28
	2	RED	HALL A		
	3	YEL	HALL B		
	4	BRN	HALL C		
	5	GRN	GND	GROUND FOR HALL SENSORS	

STAR CONNECTING PHASE A RED  
PHASE B BRN  
PHASE C BLK

3	UPDT. TOL. 2-M2.5	08.09.17	G.S.
2	NEW UL+AWG	04.10.12	J.W.
1	NEW TECHNICAL SPECIFICATION	16.10.08	J.W.
REV	DESCRIPTION	DATE	APVD



DB22L01

SCALE FREE	APVD	B.W.	23.05.07
X ±0.5	CHKD		
1PL ±0.2	DRN	J.W.	23.05.07
2PL ±0.1	SIGNATURE	DATE	
ANGLE ±30'			

BRUSHLESS DC MOTOR

DWG.NO

DB22L01