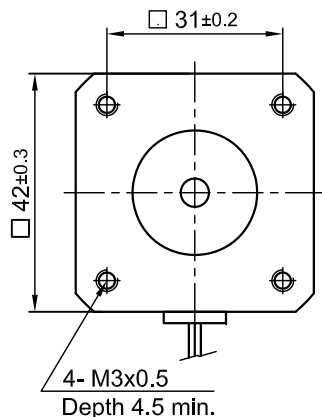
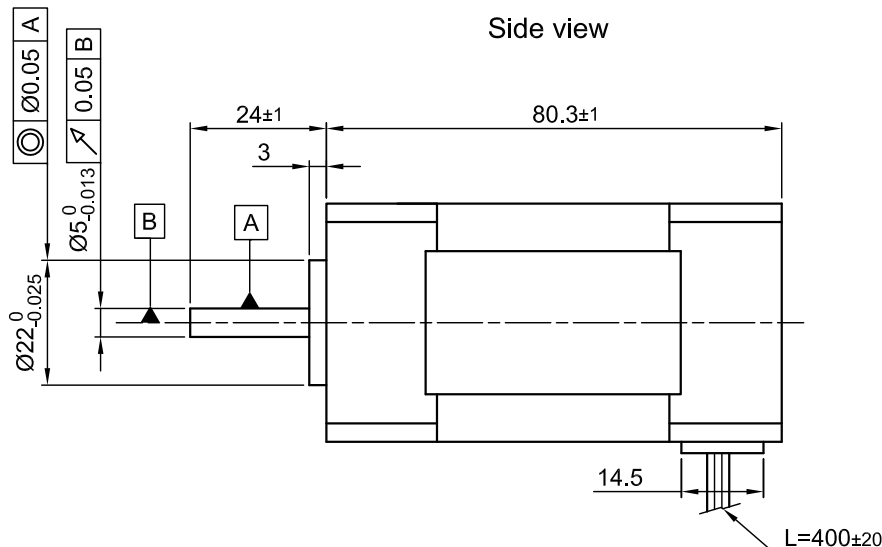


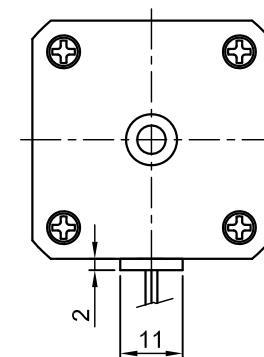
Front view and mounting



Side view

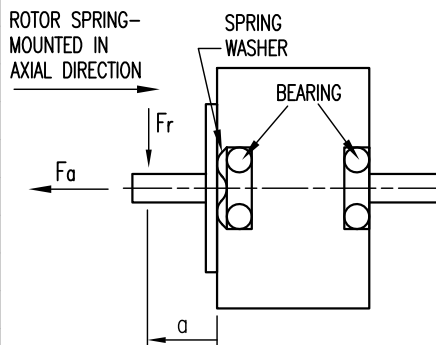


Rear view



SPECIFICATION	CONNECTION	STAR
NO. OF POL./PHASE		10/3
VOLTAGE RATED (VDC)		24
CURRENT RATED/PEAK (AMP)		4.8/ 14.8
RESISTANCE/PHASE TO PHASE (Ohms) @20°C		0.7 ±10%
INDUCTANCE/PHASE TO PHASE (mH) @1KHz		0.58 ±20%
TORQUE RATED/PEAK (Nm)		0.26/0.8
TORQUE CONSTANT (Nm/A)		0.054
POWER RATED (W)		82
SPEED RATED/NO LOAD (RPM)		3000/4100
ROTOR INERTIA [g.cm ²]		154
WEIGHT (Kg)		0.65
TEMPERATURE RISE: MAX.80°C		
AMBIENT TEMPERATURE -10°~ 50°C [14°F ~ 122°F]		
INSULATION RESISTANCE 100 MOhm (UNDER NORMAL TEMPERATURE AND HUMIDITY)		
INSULATION CLASS B 130° [266°F]		
DIELECTRIC STRENGTH 500VAC FOR 1 MIN. (BETWEEN THE MOTOR COILS AND THE MOTOR CASE)		
AMBIENT HUMIDITY MAX. 85% (NO CONDENSATION)		

PERMISSIBLE RADIAL+AXIAL FORCE

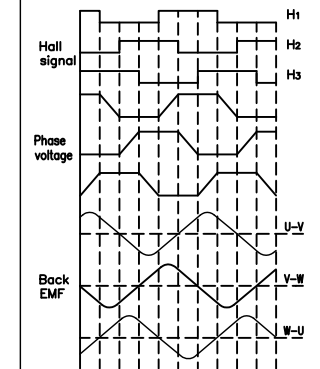


AXIAL-FORCE Fa (N)	Fr=10	
DISTANCE a (mm)	20	
RADIAL-FORCE Fr (N)	28	
	AXIAL	RADIAL
SHAFT PLAY (mm)	0.08	0.02
AT LOAD MAX: (N)	4.5	4.5

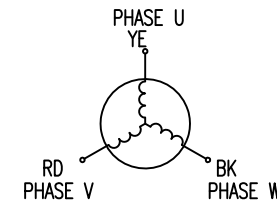
WIRING DIAGRAM

	COLOR	FUNCTION	LEAD GAUGE
MOTOR 10 POL.	YE	U	UL1332 AWG18
	RD	V	
	BK	W	
HALL 30 IMPL. REV.	RD	+5V	UL1430 AWG26
	BU	H1	
	GN	H2	
	WH	H3	
	BK	GND	

CW from shaft side



STAR CONNECTION



				 Nanotec [®] PLUG & DRIVE	APVD	<i>M.P.</i>	06.05.15	BRUSHLESS DC MOTOR DWG.NO DB41L024030-A		
					CHKD					
				Surface specification DIN ISO 1302	General tolerances DIN ISO 2768- cH	Work piece edge DIN ISO 13715	DRN	<i>A.S.</i>	06.05.15	
REV	DESCRIPTION	DATE	DRN				SIGNATURE	DATE		