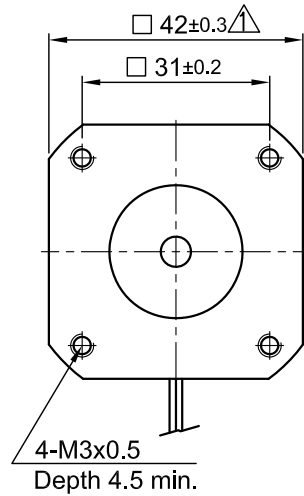
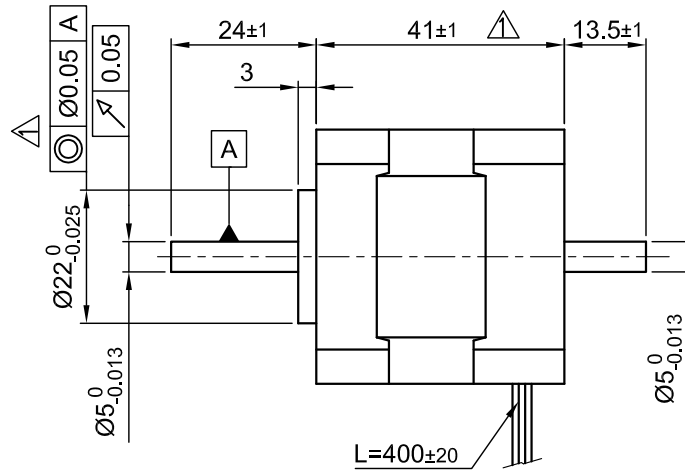


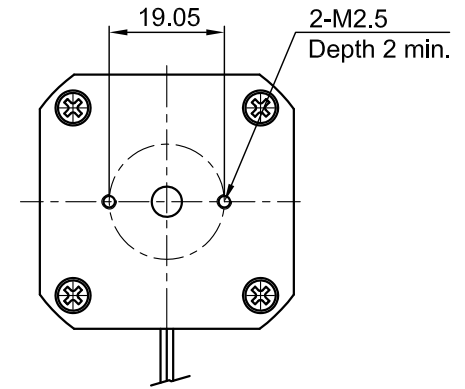
Front view and mounting



Side view

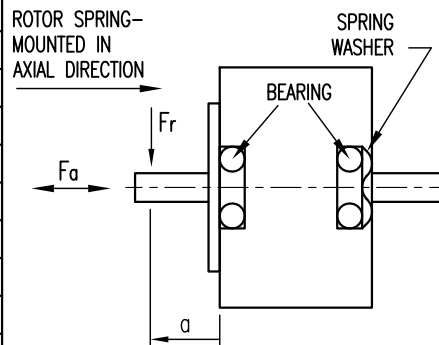


Rear view



SPECIFICATION	CONNECTION	DELTA
NO. OF POL./PHASE		8/3
VOLTAGE RATED (VDC)		48
CURRENT NO LOAD/RATED/PEAK (AMP)		0.2/0.88/2.63
RESISTANCE/PHASE TO PHASE (Ohms) @25°C		3.5±15%
INDUCTANCE/PHASE TO PHASE (mH) @1KHz		5.8±20%
TORQUE RATED/PEAK (Nm) [lb-in]		0.05/0.15 [0.443/1.328]
TORQUE CONSTANT (Nm/A)		0.057 Δ
POWER RATED (W)		31 Δ
SPEED RATED/NO LOAD (RPM) Δ		6000/7700
ROTOR INERTIA (Kg-m ²) [lb-in ²]		2.4x10 ⁻⁶ [8.2x10 ⁻³]
WEIGHT (Kg) [lb]		0.25 [0.551]
TEMPERATURE RISE: MAX.80°C		
AMBIENT TEMPERATURE -10°~ 50°C [14°F ~ 122°F]		
INSULATION RESISTANCE 100 MOhm (UNDER NORMAL TEMPERATURE AND HUMIDITY)		
INSULATION CLASS B 130° [266°F]		
DIELECTRIC STRENGTH 500VAC FOR 1 MIN. (BETWEEN THE MOTOR COILS AND THE MOTOR CASE)		
AMBIENT HUMIDITY MAX. 85% (NO CONDENSATION)		

PERMISSIBLE RADIAL+AXIAL FORCE



AXIAL-FORCE Fa (N)	Fr=10	
DISTANCE a (mm)	20	
RADIAL-FORCE Fr (N)	28	
	AXIAL	RADIAL
SHAFT PLAY (mm)	0.08	0.02
AT LOAD MAX: (N)	4.5	4.5

WIRING DIAGRAM		LEAD GAUGE	
COLOR	FUNCTION	Dir. \longleftrightarrow	
MOTOR 8 POL.	YEL U X HI HI X LOW LOW	UL1430 AWG20	
	RED V HI X LOW LOW X HI		
	BLK W LOW LOW X HI HI X		
HALL 24 IMPL. REV.	RED +5V	UL1430 AWG26	
	BLU H1 0 0 0 1 1 1		
	WHT H2 0 1 1 1 0 0		
	GRN H3 1 1 0 0 0 1		
	BLK GND		

DELTA CONNECTING PHASE A YEL

PHASE B RED PHASE C BLK

4	CHANGE POWER RATED	16.06.15	A.S.
3	UPDT. DATA	24.10.14	J.D.
2	PIN, COLUMN OMITTED	08.11.12	A.S.
REV	DESCRIPTION	DATE	DRN



DB42S01

SCALE FREE	APVD	S.Ha.	19.06.07
X ±0.5	CHKD		
1PL ±0.2	DRN	J.W.	10.11.06
2PL ±0.1	SIGNATURE	DATE	
ANGLE ±30'			

BRUSHLESS DC MOTOR

DWG.NO

DB42S01