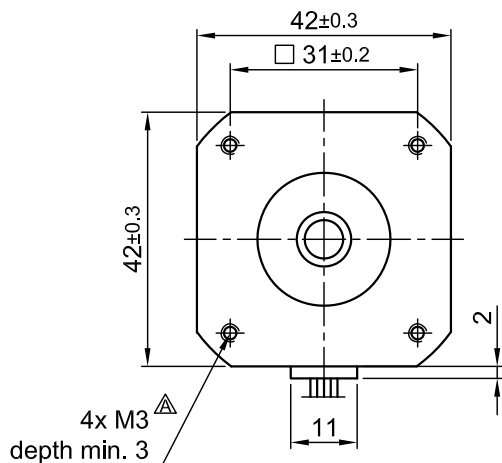
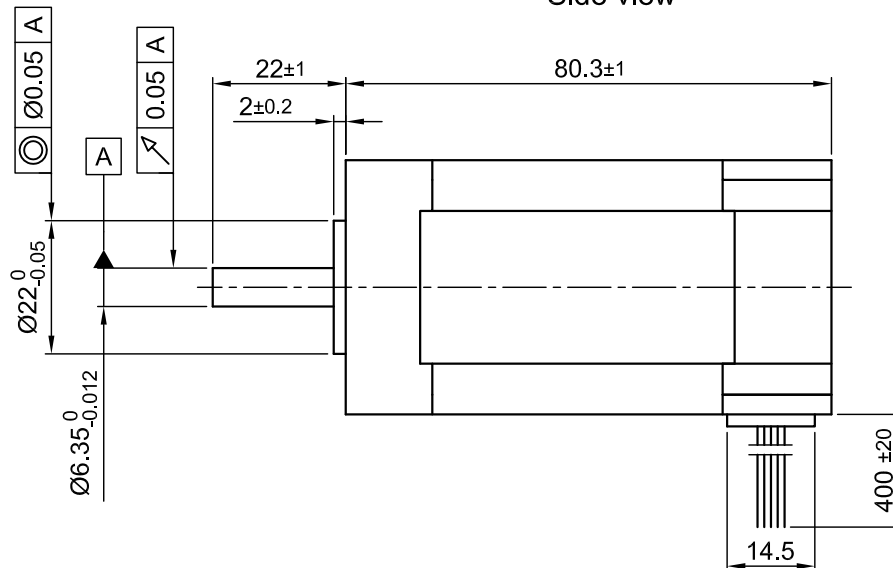


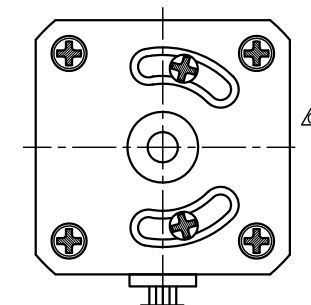
Front view and mounting



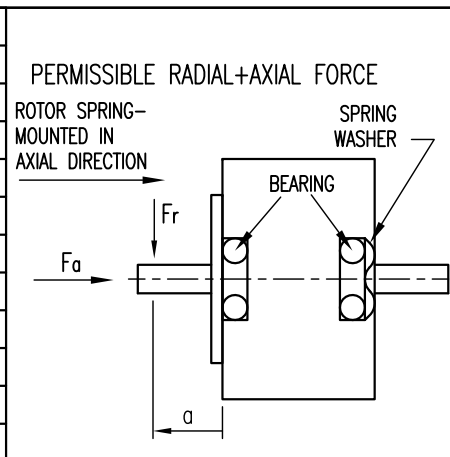
Side view



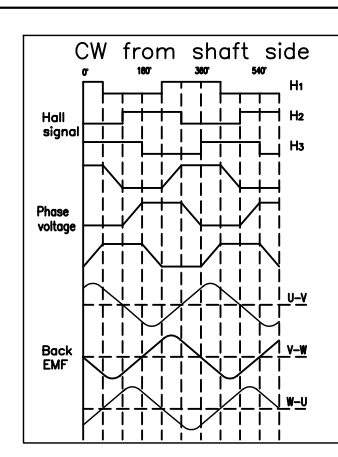
Rear view



SPECIFICATION	CONNECTION	STAR
NO. OF POL./PHASE		6/3
VOLTAGE RATED (VDC)		24
CURRENT RATED/PEAK (AMP)		4.8/ 14.4
RESISTANCE/LINE TO LINE (Ohms) @20°C		0.54 ±10%
INDUCTANCE/LINE TO LINE (mH) @1KHz		0.45 ±20% $\triangle B$
TORQUE RATED/PEAK (Nm)		0.3/ 0.9
TORQUE CONSTANT (Nm/A)		0.0625
POWER RATED (W)		94
SPEED RATED/NO LOAD (RPM)		3000/3750
ROTOR INERTIA (Kg-m ²)		8x10 ⁻⁶
WEIGHT (Kg)		0.8



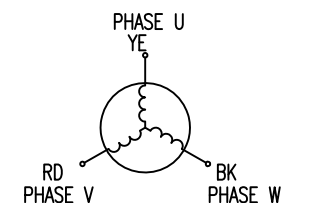
WIRING DIAGRAM			
	COLOR	FUNCTION	LEAD GAUGE
MOTOR 6 POL.	YE	U	UL1430 AWG20
	RD	V	
	BK	W	
HALL 18 IMPL. REV.	RD	+5V	UL1430 AWG26
	BU	H1	
	GN	H2	
	WH	H3	
	BK	GND	



TEMPERATURE RISE: MAX.80°C		AXIAL-FORCE Fa (N)	Fa=10
AMBIENT TEMPERATURE -10°~ 50°C [14°F ~ 122°F]		DISTANCE a (mm)	20
INSULATION RESISTANCE 100 MOhm (UNDER NORMAL TEMPERATURE AND HUMIDITY)		RADIAL-FORCE Fr (N)	28
INSULATION CLASS B 130° [266°F]			AXIAL RADIAL
DIELECTRIC STRENGTH 500VAC FOR 1 MIN. (BETWEEN THE MOTOR COILS AND THE MOTOR CASE)		SHAFT PLAY (mm)	0.08 0.02
AMBIENT HUMIDITY MAX. 85% (NO CONDENSATION)		AT LOAD MAX: (N)	4.5 4.5

AXIAL-FORCE Fa (N)	Fa=10
DISTANCE a (mm)	20
RADIAL-FORCE Fr (N)	28
	AXIAL RADIAL
SHAFT PLAY (mm)	0.08 0.02
AT LOAD MAX: (N)	4.5 4.5

STAR CONNECTION



C	-	31.05.16	A.S.		APVD	G.S.	15.09.15	BRUSHLESS DC MOTOR		
B	-	02.12.15	A.S.		CHKD					
A	-	29.09.15	A.S.	Surface specification DIN ISO 1302	General tolerances DIN ISO 2768- cH	Work piece edge DIN ISO 13715	DRN	A.S.	15.09.15	DWG.NO DB43L024030-A
REV	DESCRIPTION	DATE	DRN				SIGNATURE	DATE		