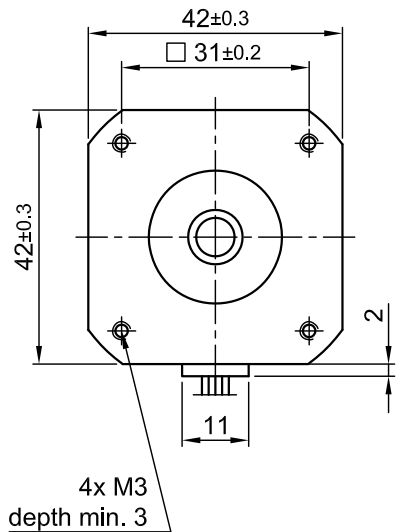
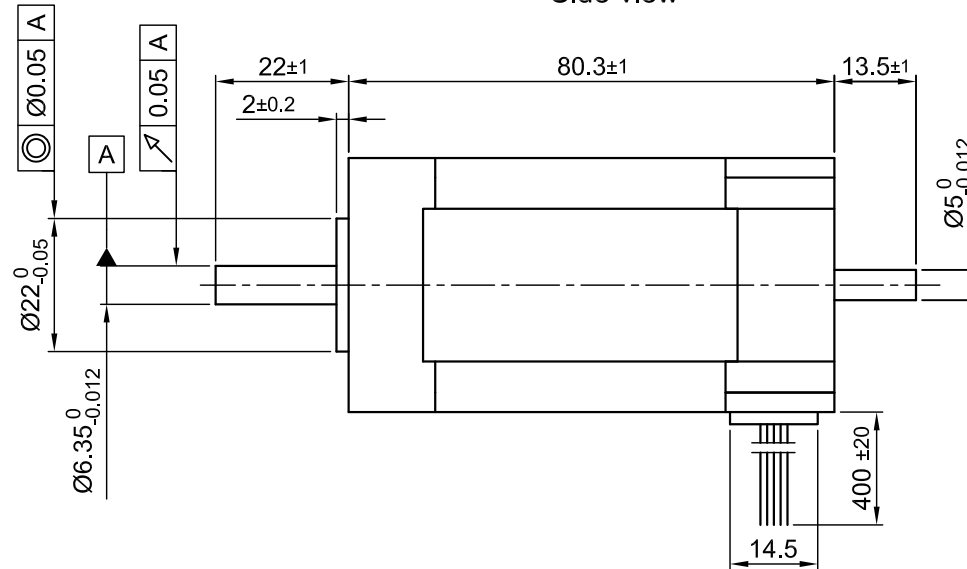


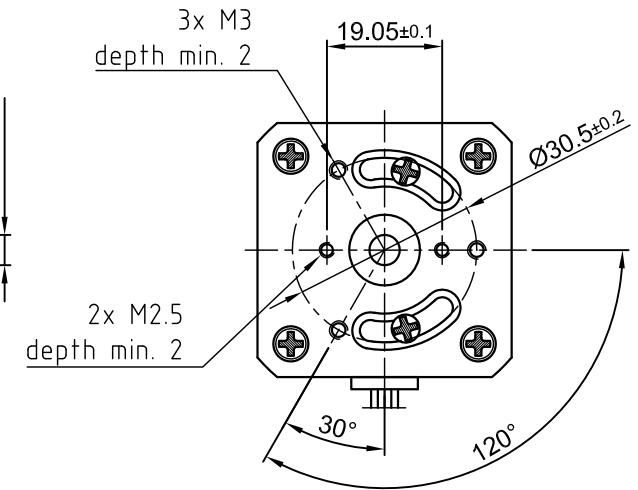
Front view and mounting



Side view

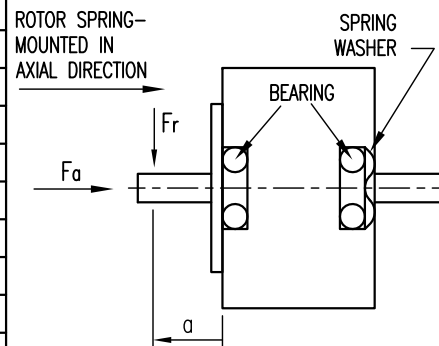


Rear view



SPECIFICATION	CONNECTION	STAR
NO. OF POL./PHASE		6/3
VOLTAGE RATED (VDC)		24
CURRENT RATED/PEAK (AMP)		4.8/ 14.4
RESISTANCE/LINE TO LINE (Ohms) @20°C		0.54 ±10%
INDUCTANCE/LINE TO LINE (mH) @1KHz		0.45 ±20%
TORQUE RATED/PEAK (Nm)		0.3/ 0.9
TORQUE CONSTANT (Nm/A)		0.0625
POWER RATED (W)		94
SPEED RATED/NO LOAD (RPM)		3000/3750
ROTOR INERTIA (Kg-m ²)		8x10 ⁻⁶
WEIGHT (Kg)		0.8
TEMPERATURE RISE: MAX.80°C		
AMBIENT TEMPERATURE -10°~ 50°C [14°F ~ 122°F]		
INSULATION RESISTANCE 100 MOhm (UNDER NORMAL TEMPERATURE AND HUMIDITY)		
INSULATION CLASS B 130° [266°F]		
DIELECTRIC STRENGTH 500VAC FOR 1 MIN. (BETWEEN THE MOTOR COILS AND THE MOTOR CASE)		
AMBIENT HUMIDITY MAX. 85% (NO CONDENSATION)		

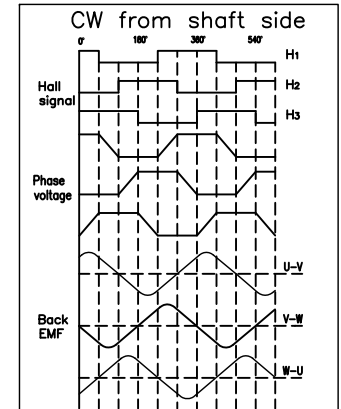
PERMISSIBLE RADIAL+AXIAL FORCE



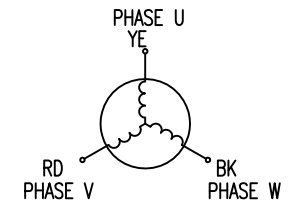
AXIAL-FORCE Fa (N)	Fr (N)
Fa=10	28
DISTANCE a (mm)	20
SHAFT PLAY (mm)	0.08
AT LOAD MAX: (N)	4.5

WIRING DIAGRAM

	COLOR	FUNCTION	LEAD GAUGE
MOTOR 6 POL.	YE	U	UL1430 AWG20
	RD	V	
	BK	W	
HALL 18 IMPL. REV.	RD	+5V	UL1430 AWG26
	BU	H1	
	GN	H2	
	WH	H3	
	BK	GND	



STAR CONNECTION



REV	DESCRIPTION	DATE	DRN	Surface specification DIN ISO 1302	General tolerances DIN ISO 2768- cH	Work piece edge DIN ISO 13715	APVD	G.S.	18.08.16	BRUSHLESS DC MOTOR
							CHKD			
							DRN	A.S.	18.08.16	DWG.NO
							SIGNATURE		DATE	DB43L024030-B