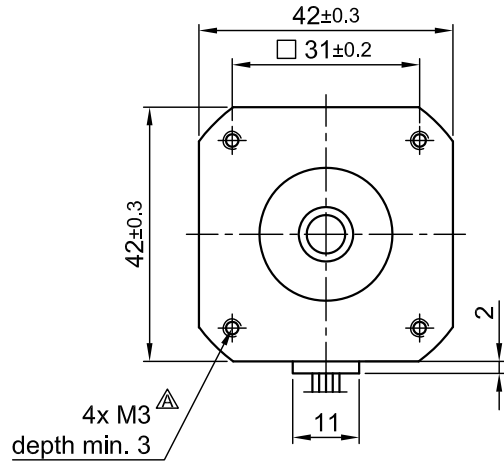
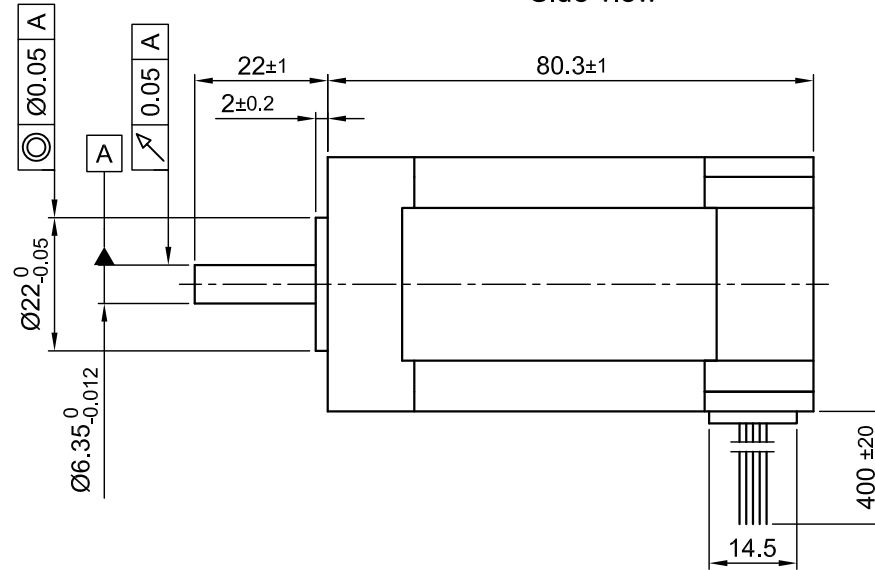


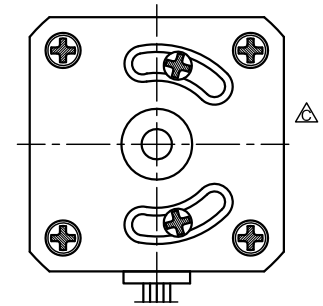
Front view and mounting



Side view

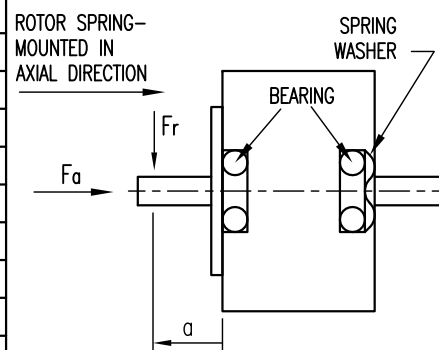


Rear view



SPECIFICATION	CONNECTION	STAR
NO. OF POL./PHASE		6/3
VOLTAGE RATED (VDC)		48
CURRENT RATED/PEAK (AMP)		2.4/ 7.2
RESISTANCE/LINE TO LINE (Ohms) @20°C		2.2 ±10%
INDUCTANCE/LINE TO LINE (mH) @1KHz		1.70 ±20% $\Delta$
TORQUE RATED/PEAK (Nm)		0.3/ 0.9
TORQUE CONSTANT (Nm/A)		0.125
POWER RATED (W)		94
SPEED RATED/NO LOAD (RPM)		3000/3750
ROTOR INERTIA (Kg-m <sup>2</sup> )		8x10 <sup>-6</sup>
WEIGHT (Kg)		0.8

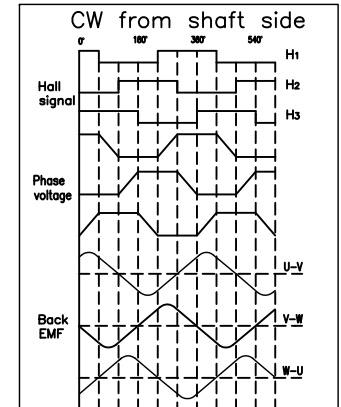
PERMISSIBLE RADIAL+AXIAL FORCE



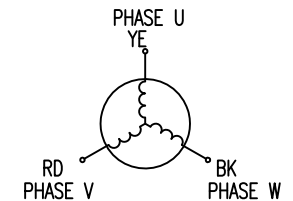
AXIAL-FORCE Fa (N)	Fr	Fr	
DISTANCE a (mm)		20	
RADIAL-FORCE Fr (N)		28	
		AXIAL	RADIAL
SHAFT PLAY (mm)		0.08	0.02
AT LOAD MAX: (N)		4.5	4.5

WIRING DIAGRAM

	COLOR	FUNCTION	LEAD GAUGE
MOTOR 6 POL.	YE	U	UL1430 AWG20
	RD	V	
	BK	W	
HALL 18 IMPL. REV.	RD	+5V	UL1430 AWG26
	BU	H1	
	GN	H2	
	WH	H3	
	BK	GND	



STAR CONNECTION



C	-	31.05.16	A.S.	 <b>Nanotec</b> <sup>®</sup> PLUG & DRIVE	APVD	G.S.	15.09.15	<b>BRUSHLESS DC MOTOR</b> DWG.NO		
B	-	07.01.16	A.S.		CHKD					
A	-	29.09.15	A.S.	Surface specification DIN ISO 1302	General tolerances DIN ISO 2768- cH	Work piece edge DIN ISO 13715	DRN	A.S.	15.09.15	DB43L048030-A
REV	DESCRIPTION	DATE	DRN				SIGNATURE	DATE		