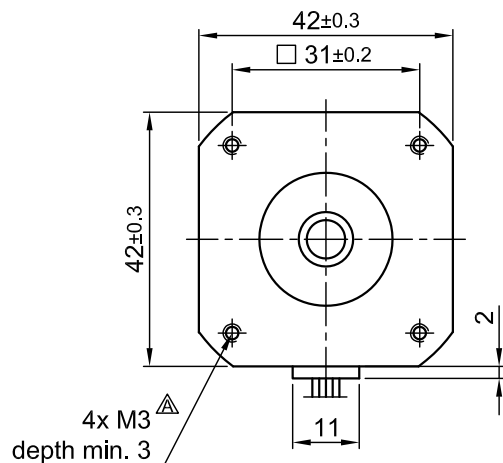
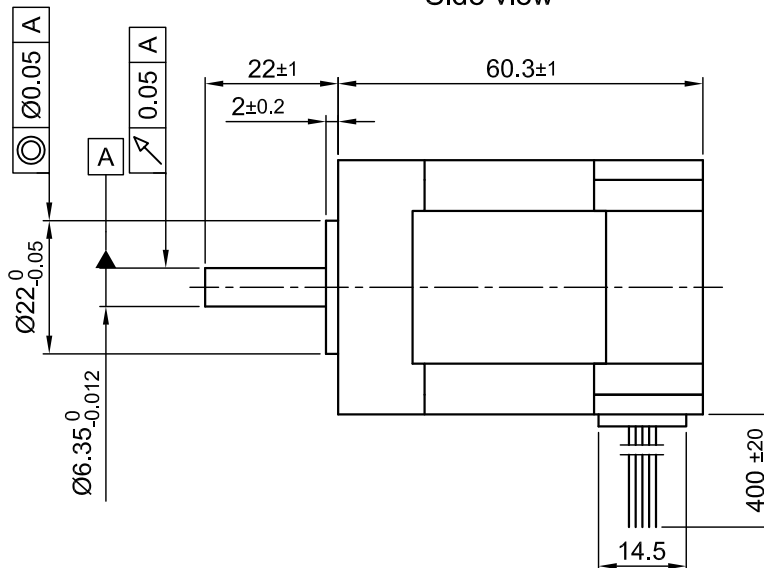


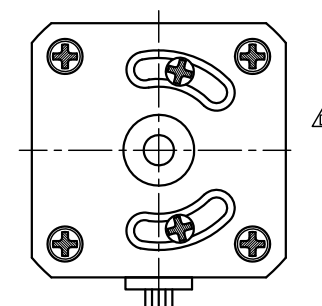
Front view and mounting



Side view

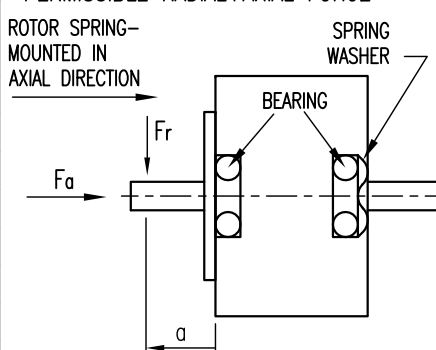


Rear view



SPECIFICATION	CONNECTION	STAR
NO. OF POL./PHASE		6/3
VOLTAGE RATED (VDC)		24
CURRENT RATED/PEAK (AMP)		3.1/ 9.3
RESISTANCE/LINE TO LINE (Ohms) @20°C		1.05 ±10%
INDUCTANCE/LINE TO LINE (mH) @1KHz		0.75 ±20% $\triangle C/B$
TORQUE RATED/PEAK (Nm)		0.17/ 0.51
TORQUE CONSTANT (Nm/A)		0.055
POWER RATED (W)		53
SPEED RATED/NO LOAD (RPM)		3000/3900
ROTOR INERTIA (Kg-m ²)		6x10 ⁻⁶
WEIGHT (Kg)		0.6

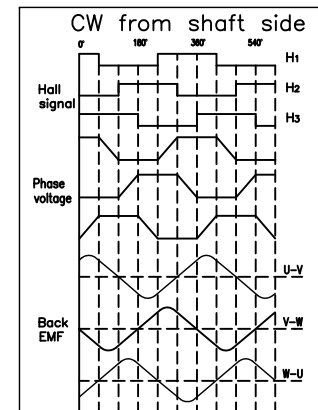
PERMISSIBLE RADIAL+AXIAL FORCE



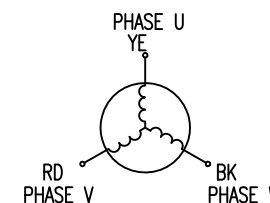
AXIAL-FORCE Fa (N)	Fr	Fr
DISTANCE a (mm)		20
RADIAL-FORCE Fr (N)		28
	AXIAL	RADIAL
SHAFT PLAY (mm)	0.08	0.02
AT LOAD MAX: (N)	4.5	4.5

WIRING DIAGRAM

	COLOR	FUNCTION	LEAD GAUGE
MOTOR 6 POL.	YE	U	UL1430 AWG20
	RD	V	
	BK	W	
HALL 18 IMPL. REV.	RD	+5V	UL1430 AWG26
	BU	H1	
	GN	H2	
	WH	H3	
	BK	GND	



STAR CONNECTION



D	-	31.05.16	A.S.	 Nanotec [®] PLUG & DRIVE	APVD	G.S.	15.09.15	BRUSHLESS DC MOTOR	
C	-	07.01.16	A.S.		CHKD				
B	-	02.12.15	A.S.		DRN	A.S.	15.09.15	DWG.NO	
REV	DESCRIPTION	DATE	DRN	Surface specification DIN ISO 1302	General tolerances DIN ISO 2768- cH	Work piece edge DIN ISO 13715	SIGNATURE	DATE	DB43M024030-A