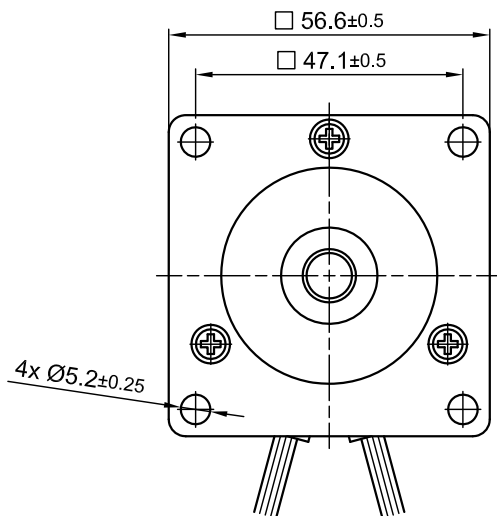
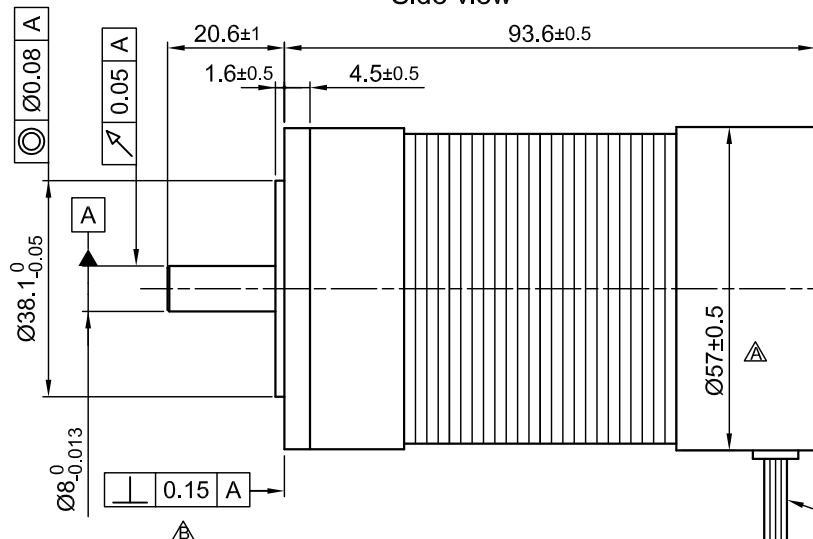


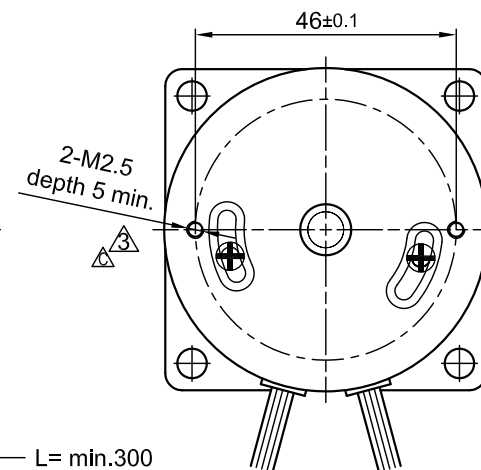
Front view and mounting



Side view

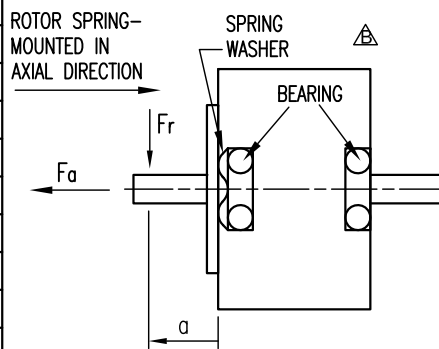


Rear view



SPECIFICATION	CONNECTION	STAR
NO. OF POL./PHASE		6/3
VOLTAGE RATED (VDC)		24
CURRENT RATED/PEAK (AMP)		13.6/ 40
RESISTANCE/PHASE TO PHASE (Ohms) @20°C		0.135 ±10%
INDUCTANCE/PHASE TO PHASE (mH) @1KHz		0.2 ±20%
TORQUE RATED/PEAK (Nm) [lb-in]		0.6/1.8 [5.31/15.93]
TORQUE CONSTANT (Nm/A)/BACK-EMF (Vrms/kRPM)		0.044/ 3.7
POWER RATED (W)		220
SPEED RATED/NO LOAD (RPM)		3500/4500
ROTOR INERTIA (Kg-m ²) [lb-in ²]		17.3x10 ⁻⁶ [0.059]
WEIGHT (Kg) [lb]		0.95 [2.1]

PERMISSIBLE RADIAL+AXIAL FORCE

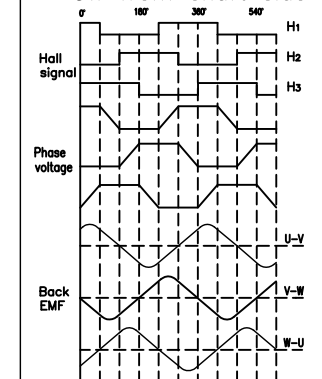


AXIAL-FORCE Fa (N)	Fr=15	
DISTANCE a (mm)	20	
RADIAL-FORCE Fr (N)	75	
	AXIAL	RADIAL
SHAFT PLAY (mm)	0.025	0.025
AT LOAD MAX: (N)	40	4.6

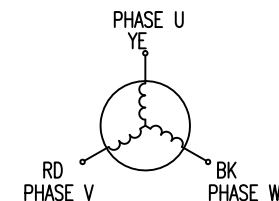
WIRING DIAGRAM

	COLOR	FUNCTION	LEAD GAUGE
MOTOR 6 POL.	YE	U	UL1332 AWG16
	RD	V	
	BK	W	
HALL 18 IMPL. REV.	RD	+5V	UL1430 AWG26
	BU	H1	
	GN	H2	
	WH	H3	
	BK	GND	

CW from shaft side



STAR CONNECTION



3	change tolerance	30.05.17	A.S.
2	change AWG 18 to 16	07.12.16	A.S.
1	CORR. HALL ASSIGNM.	13.06.14	J.D.
REV	DESCRIPTION	DATE	DRN



Surface specification DIN ISO 1302	General tolerances DIN ISO 2768- cH	Work piece edge DIN ISO 13715
---------------------------------------	--	----------------------------------

APVD	G.S.	26.09.13
CHKD		
DRN	A.S.	26.09.13
SIGNATURE	DATE	

BRUSHLESS DC MOTOR

DWG.NO

DB59C024035-A