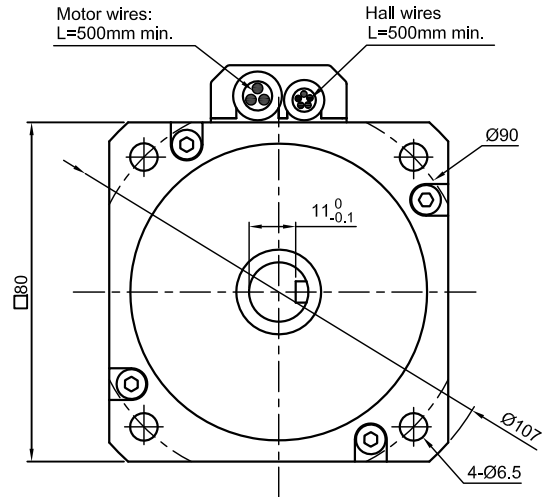
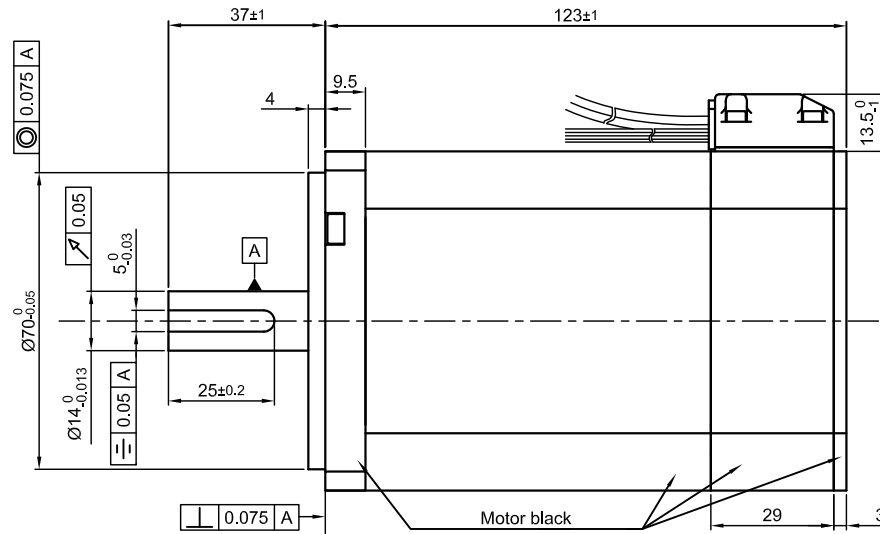


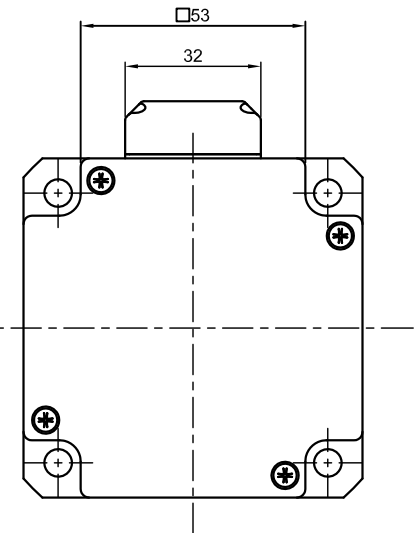
Front view and mounting



Side view

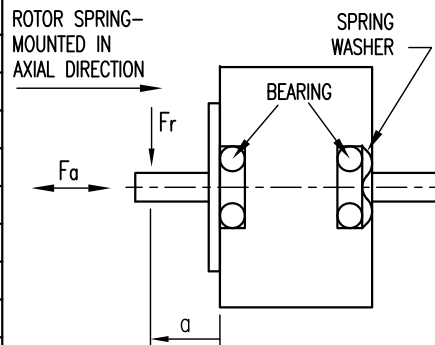


Rear view



SPECIFICATION	CONNECTION	DELTA
NO. OF POL./PHASE		8/3
VOLTAGE RATED (VDC)		48
CURRENT RATED/NO LOAD/PEAK (A)		18.75/1/65
RESISTANCE/LINE TO LINE (Ohms) @25°C		0.085±15%
INDUCTANCE/LINE TO LINE (mH) @1KHz		0.4±20%
TORQUE RATED/PEAK (Nm) [lb-in]		2.25/6.5 [19.91/57.53]
TORQUE CONSTANT (Nm/A) [lb-in/A]		0.12 [1.062]
POWER RATED (W)		706
SPEED RATED/NO LOAD (RPM)		3000/4300±10%
ROTOR INERTIA (g.cm ²)		1360
WEIGHT (Kg) [lb]		2.6[5.73]
TEMPERATURE RISE: MAX.80°C		
AMBIENT TEMPERATURE -10°~ 50°C [14°F ~ 122°F]		
INSULATION RESISTANCE 100 MOhm (UNDER NORMAL TEMPERATURE AND HUMIDITY)		
INSULATION CLASS B 130° [266°F]		
DIELECTRIC STRENGTH 500VAC FOR 1 MIN. (BETWEEN THE MOTOR COILS AND THE MOTOR CASE)		
AMBIENT HUMIDITY MAX. 85% (NO CONDENSATION)		

PERMISSIBLE RADIAL+AXIAL FORCE

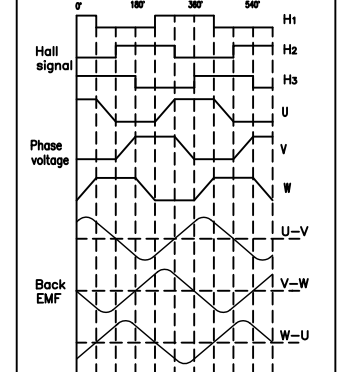


AXIAL-FORCE Fa (N)	45	
DISTANCE a (mm)	20	
RADIAL-FORCE Fr (N)	115	
	AXIAL	RADIAL
SHAFT PLAY (mm)	0.025	0.025
AT LOAD MAX: (N)	40	4.6

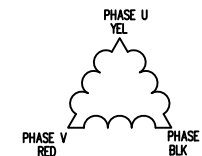
WIRING DIAGRAM

	COLOR	FUNCTION	LEAD GAUGE
MOTOR 8 POL.	YEL	U	UL3135 AWG14
	RED	V	
	BLK	W	
HALL 24 IMPL. REV.	RED	4.5~24V	SHIELDED, ROUND CABLE AWM 2464 AWG26
	BLU	H1	
	GRN	H2	
	WHT	H3	
	BLK	GND	

CCW from shaft side



DELTA CONNECTING



B	-	25.07.17	GYQ	 Nanotec [®] PLUG & DRIVE	APVD	S.G.	09.08.16	BRUSHLESS DC MOTOR DWG.NO DB80L048030-A
A	-	29.08.16	GYQ		CHKD	L B	09.08.16	
REV	DESCRIPTION	DATE	DRN		DRN	GYQ	09.08.16	
				Surface specification DIN ISO 1302	General tolerances DIN ISO 2768-cH	Work piece edge DIN ISO 13715	SIGNATURE	DATE