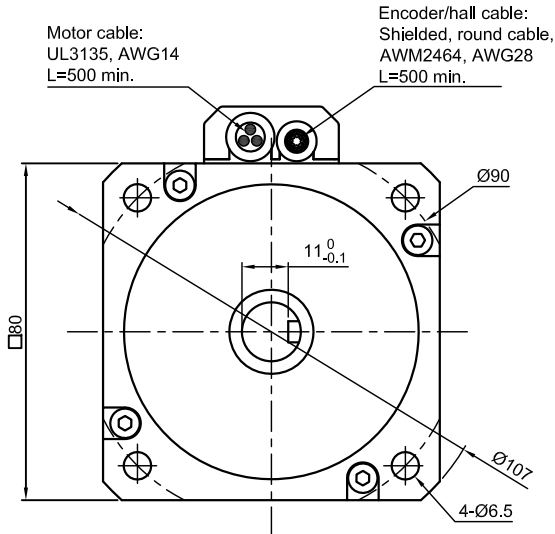


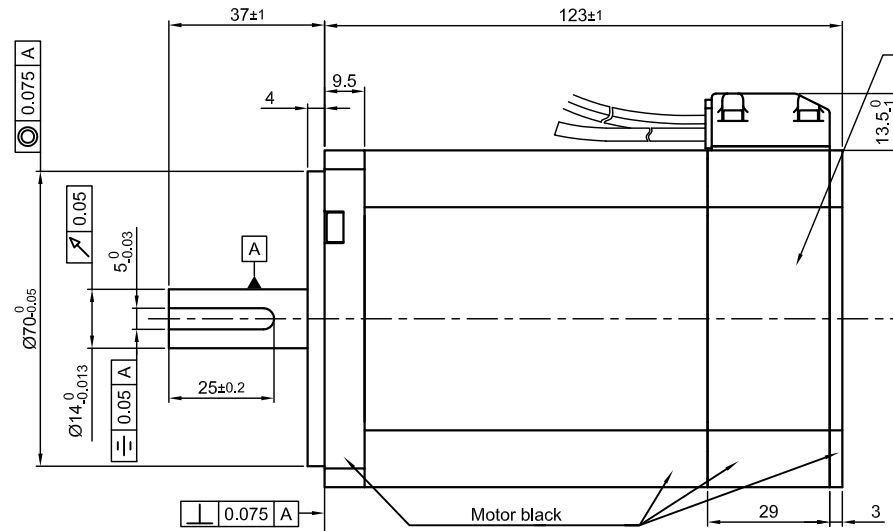
Front view and mounting



Motor cable:
UL3135, AWG14
L=500 min.

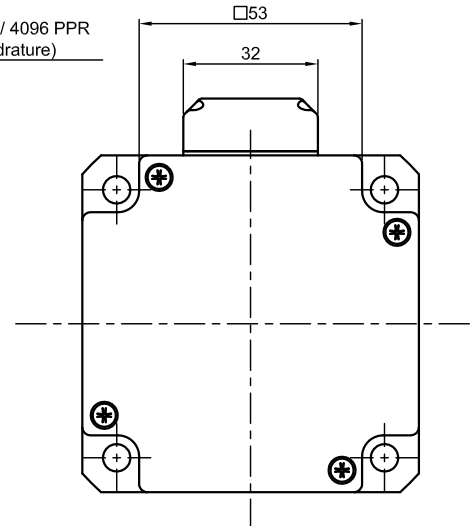
Encoder/hall cable:
Shielded, round cable,
AWM2464, AWG28
L=500 min.

Side view



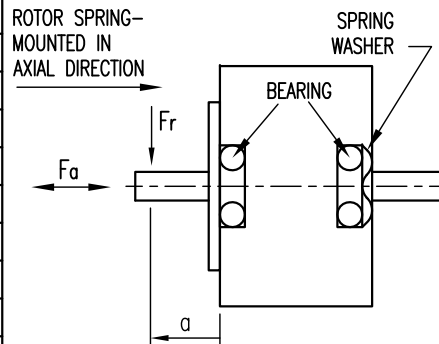
Encoder:
1024 CPR/ 4096 PPR
(With quadrature)

Rear view



| SPECIFICATION | CONNECTION | DELTA |
|--|------------|------------------------|
| NO. OF POL./PHASE | | 8/3 |
| VOLTAGE RATED (VDC) | | 48 |
| CURRENT RATED/NO LOAD/PEAK (A) | | 18.75/1/65 |
| RESISTANCE/LINE TO LINE (Ohms) @25°C | | 0.085±15% |
| INDUCTANCE/LINE TO LINE (mH) @1KHz | | 0.4±20% |
| TORQUE RATED/PEAK (Nm) [lb-in] | | 2.25/6.5 [19.91/57.53] |
| TORQUE CONSTANT (Nm/A) [lb-in/A] | | 0.12 [1.062] |
| POWER RATED (W) | | 706 |
| SPEED RATED/NO LOAD (RPM) | | 3000/4300±10% |
| ROTOR INERTIA (g.cm ²) | | 1360 |
| WEIGHT (Kg) [lb] | | 2.6[5.73] |
| TEMPERATURE RISE: MAX.80°C | | |
| AMBIENT TEMPERATURE -10°~ 50°C [14°F ~ 122°F] | | |
| INSULATION RESISTANCE 100 MOhm (UNDER NORMAL TEMPERATURE AND HUMIDITY) | | |
| INSULATION CLASS B 130° [266°F] | | |
| DIELECTRIC STRENGTH 500VAC FOR 1 MIN. (BETWEEN THE MOTOR COILS AND THE MOTOR CASE) | | |
| AMBIENT HUMIDITY MAX. 85% (NO CONDENSATION) | | |

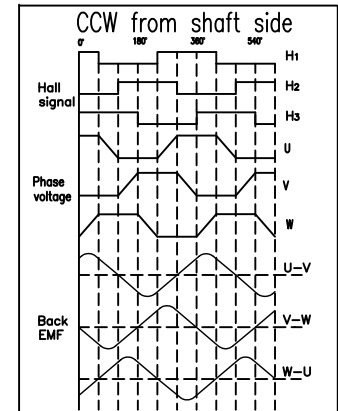
PERMISSIBLE RADIAL+AXIAL FORCE



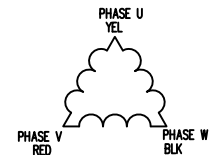
| | | |
|---------------------|--------|--------|
| AXIAL-FORCE Fa (N) | 45 | |
| DISTANCE a (mm) | 20 | |
| RADIAL-FORCE Fr (N) | 115 | |
| SHAFT PLAY (mm) | AXIAL | 0.2max |
| | RADIAL | 0.025 |
| AT LOAD MAX: (N) | AXIAL | 250 |
| | RADIAL | 4.6 |

| MOTOR CABLE | |
|-------------|----------|
| WIRE COLOR | FUNCTION |
| YEL | U |
| RED | V |
| BLK | W |

| ENCODER/HALL CABLE | |
|--------------------|------------------|
| WIRE COLOR | FUNCTION |
| GN | A |
| BN | /A |
| GY | /B |
| WH | B |
| YE | /I |
| OG | I |
| BU | H1 |
| PK | H3 |
| VT | H2 |
| BK | GND |
| RD | VCC(+5V to +24V) |
| HOUSING | SHIELDING |



DELTA CONNECTING



| | | | | | | | | |
|-----|-------------|----------|-----|---|---------------------------------------|----------------------------------|-----------|---|
| B | - | 25.07.17 | GYQ | Nanotec [®] PLUG & DRIVE | APVD | G.S. | 09.08.16 | BRUSHLESS DC MOTOR DWG.NO DB80L048030-ENM05J |
| A | - | 29.08.16 | GYQ | | CHKD | L B | 09.08.16 | |
| REV | DESCRIPTION | DATE | DRN | | DRN | GYQ | 09.08.16 | |
| | | | | Surface specification DIN ISO 1302 | General tolerances DIN ISO 2768-cH | Work piece edge DIN ISO 13715 | SIGNATURE | DATE |