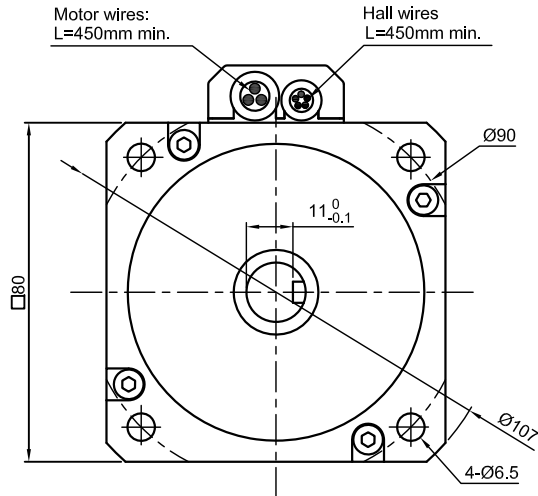
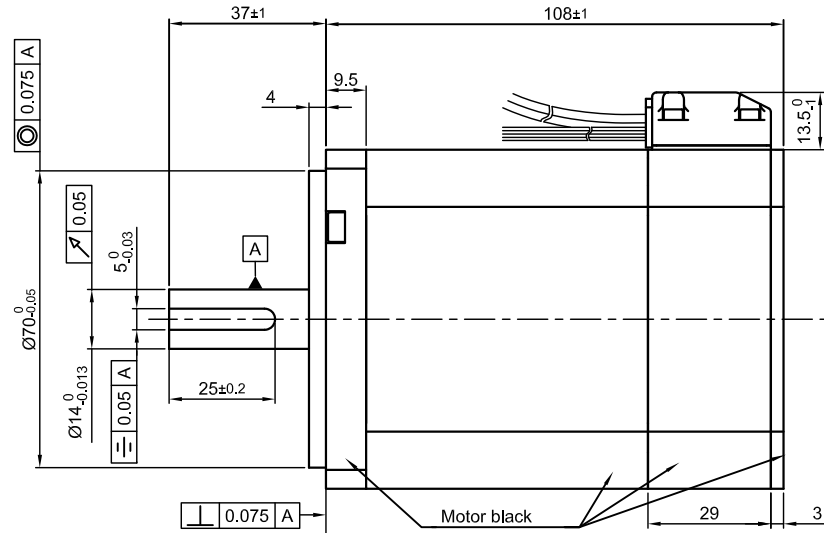


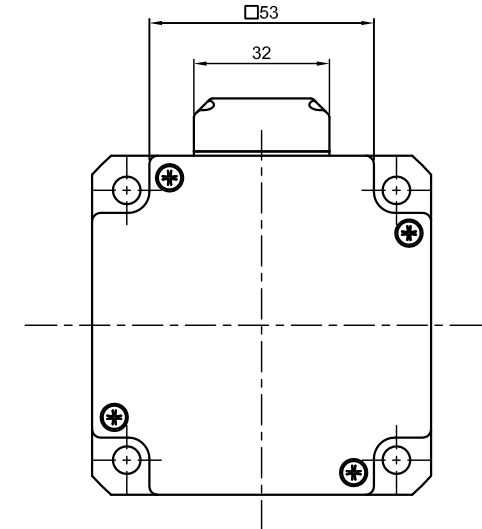
Front view and mounting



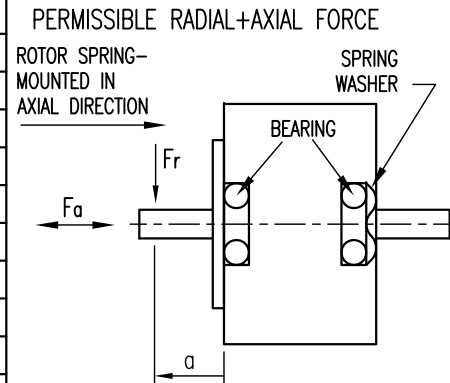
Side view



Rear view



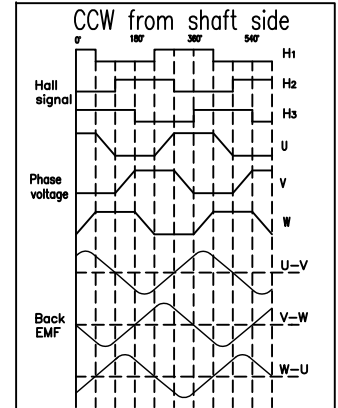
SPECIFICATION	CONNECTION	DELTA
NO. OF POL./PHASE		8/3
VOLTAGE RATED (VDC)		48
CURRENT RATED/NO LOAD/PEAK (A)		14/0.7/40
RESISTANCE/LINE TO LINE (Ohms) @25°C		0.1±10%
INDUCTANCE/LINE TO LINE (mH) @1KHz		0.6±20%
TORQUE RATED/PEAK (Nm) [lb-in]		1.7/5 [15.05/44.25]
TORQUE CONSTANT (Nm/A) [lb-in/A]		0.12 [1.062]
POWER RATED (W)		534
SPEED RATED/NO LOAD (RPM)		3000/4250±10%
ROTOR INERTIA (g.cm <sup>2</sup> )		1020
WEIGHT (Kg) [lb]		2.14 [4.72]



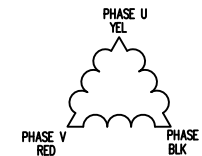
AXIAL-FORCE Fa (N)	45	
DISTANCE a (mm)	20	
RADIAL-FORCE Fr (N)	115	
SHAFT PLAY (mm)	AXIAL	0.025
	RADIAL	0.025
AT LOAD MAX: (N)	AXIAL	40
	RADIAL	4.6

WIRING DIAGRAM

	COLOR	FUNCTION	LEAD GAUGE
MOTOR 8 POL.	YEL	U	UL3135 AWG14
	RED	V	
	BLK	W	
HALL 24 IMPL. REV.	RED	4.5~24V	SHIELDED, ROUND CABLE AWM 2464 AWG26
	BLU	H1	
	GRN	H2	
	WHT	H3	
	BLK	GND	



DELTA CONNECTING



REV	DESCRIPTION	DATE	DRN
1	NEW WEIGHT	05.06.17	GYQ
F	-	11.10.16	GYQ
E	-	26.08.16	GYQ



DB80M048030-A

SCALE	FREE	APVD	S.G.	30.03.15
X	±0.5	CHKD		
1PL	±0.2	DRN	GYQ	30.03.15
2PL	±0.1	SIGNATURE		DATE
ANGLE	±30'			

BRUSHLESS DC MOTOR

DWG.NO

DB80M048030-A