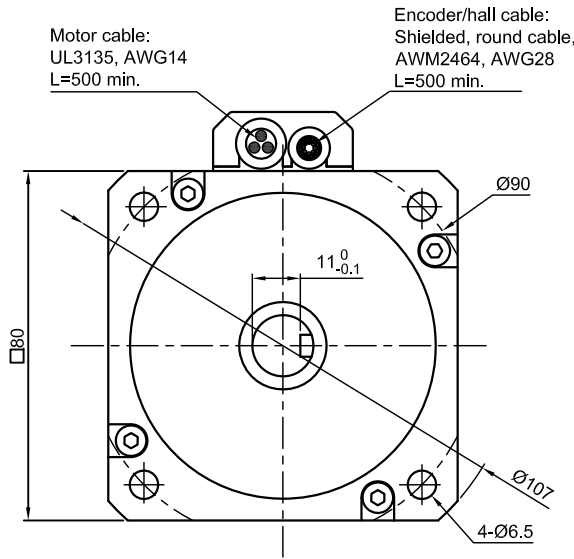
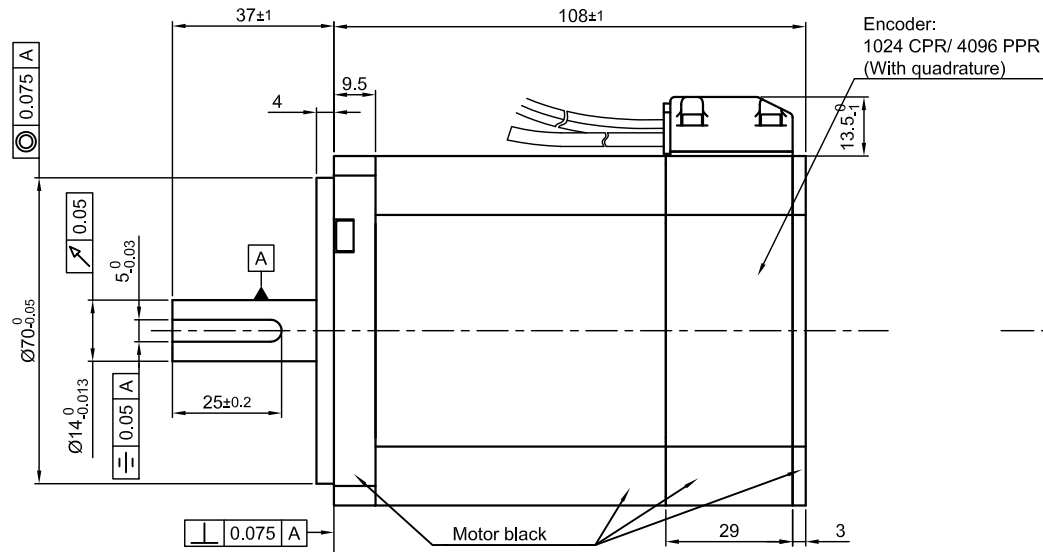


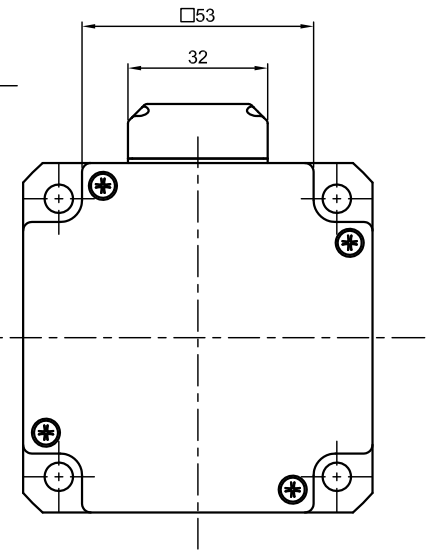
Front view and mounting



Side view

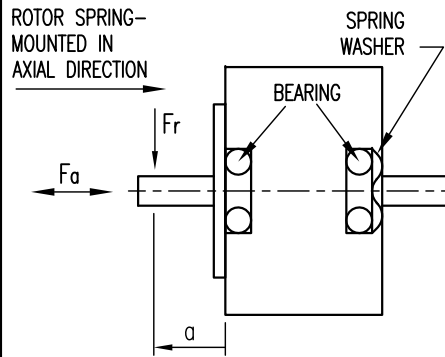


Rear view



SPECIFICATION	CONNECTION	DELTA
NO. OF POL./PHASE		8/3
VOLTAGE RATED (VDC)		48
CURRENT RATED/NO LOAD/PEAK (A)		14/0.7/40
RESISTANCE/LINE TO LINE (Ohms) @25°C		0.1±10%
INDUCTANCE/LINE TO LINE (mH) @1KHz		0.6±20%
TORQUE RATED/PEAK (Nm) [lb-in]		1.7/5 [15.05/44.25]
TORQUE CONSTANT (Nm/A) [lb-in/A]		0.12 [1.062]
POWER RATED (W)		534
SPEED RATED/NO LOAD (RPM)		3000/4250±10%
ROTOR INERTIA (g.cm <sup>2</sup> )		1020
WEIGHT (Kg) [lb]		2.15 [4.74]
TEMPERATURE RISE: MAX.80°C		
AMBIENT TEMPERATURE -10°~ 50°C [14°F ~ 122°F]		
INSULATION RESISTANCE 100 MOhm (UNDER NORMAL TEMPERATURE AND HUMIDITY)		
INSULATION CLASS B 130° [266°F]		
DIELECTRIC STRENGTH 500VAC FOR 1 MIN. (BETWEEN THE MOTOR COILS AND THE MOTOR CASE)		
AMBIENT HUMIDITY MAX. 85% (NO CONDENSATION)		

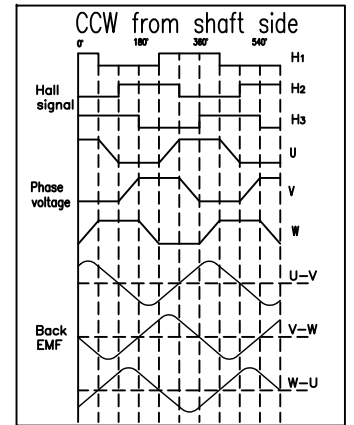
PERMISSIBLE RADIAL+AXIAL FORCE



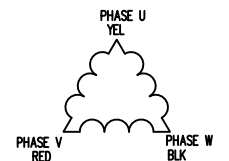
AXIAL-FORCE Fa (N)	45	
DISTANCE a (mm)	20	
RADIAL-FORCE Fr (N)	115	
SHAFT PLAY (mm)	AXIAL	0.2max
	RADIAL	0.025
AT LOAD MAX: (N)	AXIAL	250
	RADIAL	4.6

MOTOR CABLE	
WIRE COLOR	FUNCTION
YEL	U
RED	V
BLK	W

ENCODER/HALL CABLE	
WIRE COLOR	FUNCTION
GN	A
BN	/A
GY	/B
WH	B
YE	/I
OG	I
BU	H1
PK	H3
VT	H2
BK	GND
RD	VCC(+5V to +24V)
HOUSING	SHIELDING



DELTA CONNECTING



APVD	G.S.	06.01.16
CHKD		
DRN	GYQ	06.01.16
SIGNATURE		DATE

BRUSHLESS DC MOTOR

DWG.NO

DB80M048030-ENM05J

1	NEW MOTOR WEIGHT	29.10.19	GYQ
A	-	25.08.16	GYQ
REV	DESCRIPTION	DATE	DRN

Surface specification DIN ISO 1302	General tolerances DIN ISO 2768-CH	Work piece edge DIN ISO 13715
---------------------------------------	---------------------------------------	----------------------------------