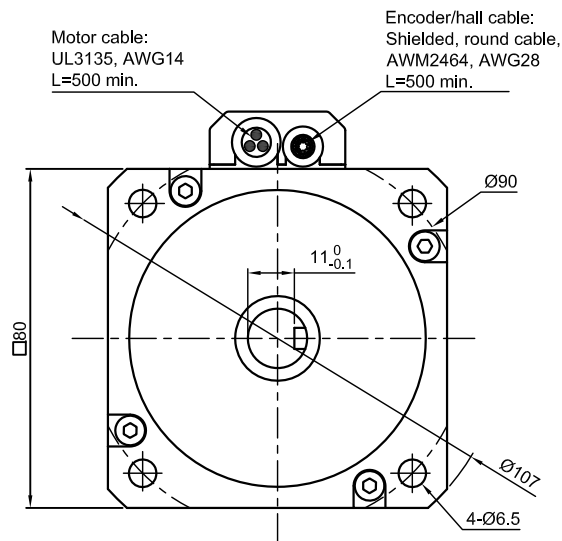
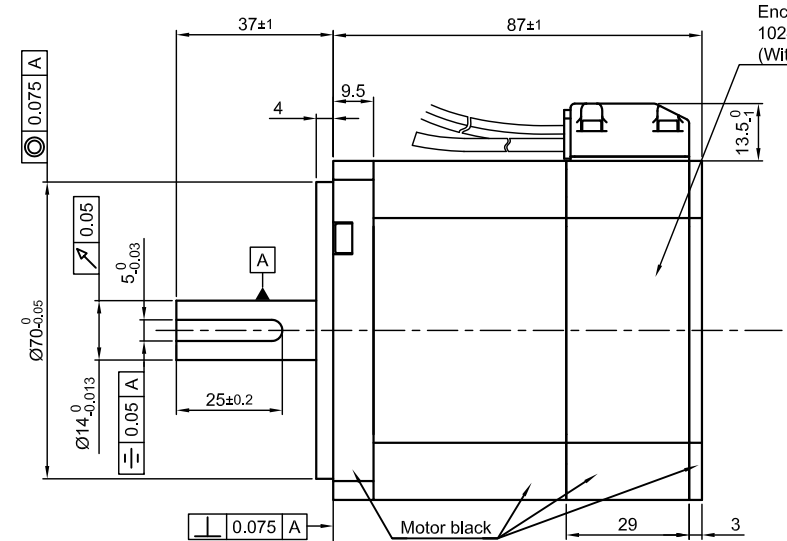


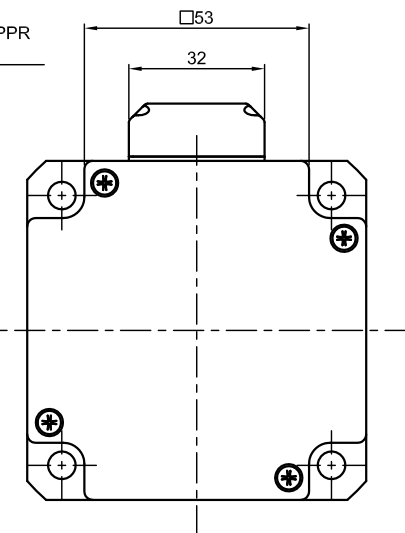
Front view and mounting



Side view

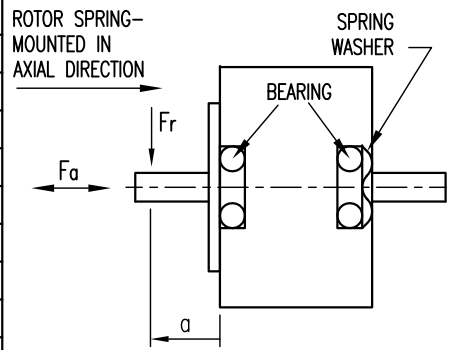


Rear view



SPECIFICATION	CONNECTION	DELTA
NO. OF POL./PHASE		8/3
VOLTAGE RATED (VDC)		48
CURRENT RATED/NO LOAD/PEAK (A)		6.9/0.5/20
RESISTANCE/LINE TO LINE (Ohms) @25°C		0.28±15%
INDUCTANCE/LINE TO LINE (mH) @1KHz		1.3±20%
TORQUE RATED/PEAK (Nm) [lb-in]		0.9/2.5 [7.97/22.13]
TORQUE CONSTANT (Nm/A) [lb-in/A]		0.13 [1.15]
POWER RATED (W)		283
SPEED RATED/NO LOAD (RPM)		3000/4100±10%
ROTOR INERTIA (g.cm <sup>2</sup> )		544
WEIGHT (Kg) [lb]		1.5[3.31]
TEMPERATURE RISE: MAX.80°C		
AMBIENT TEMPERATURE -10°~ 50°C [14°F ~ 122°F]		
INSULATION RESISTANCE 100 MOhm (UNDER NORMAL TEMPERATURE AND HUMIDITY)		
INSULATION CLASS B 130° [266°F]		
DIELECTRIC STRENGTH 500VAC FOR 1 MIN. (BETWEEN THE MOTOR COILS AND THE MOTOR CASE)		
AMBIENT HUMIDITY MAX. 85% (NO CONDENSATION)		

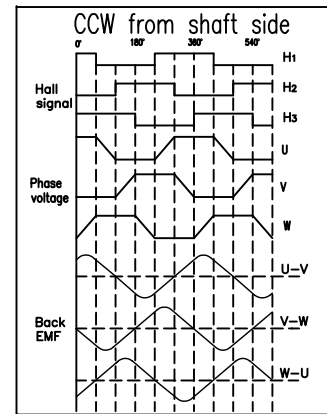
PERMISSIBLE RADIAL+AXIAL FORCE



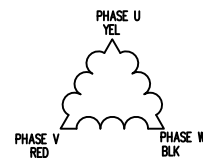
AXIAL-FORCE Fa (N)	45	
DISTANCE a (mm)	20	
RADIAL-FORCE Fr (N)	115	
SHAFT PLAY (mm)	AXIAL	0.2max
	RADIAL	0.025
AT LOAD MAX: (N)		250
		4.6

MOTOR CABLE	
WIRE COLOR	FUNCTION
YEL	U
RED	V
BLK	W

ENCODER/HALL CABLE	
WIRE COLOR	FUNCTION
GN	A
BN	/A
GY	/B
WH	B
YE	/I
OG	I
BU	H1
PK	H3
VT	H2
BK	GND
RD	VCC(+5V to +24V)
HOUSING	SHIELDING



DELTA CONNECTING



APVD	G.S.	09.08.16
CHKD	L B	09.08.16
DRN	GYQ	09.08.16
SIGNATURE		DATE

BRUSHLESS DC MOTOR

DWG.NO

DB80S048030-ENM05J

B	-	25.07.17	GYQ
A	-	29.08.16	GYQ
REV	DESCRIPTION	DATE	DRN

Surface specification	General tolerances	Work piece edge
DIN ISO 1302	DIN ISO 2768-cH	DIN ISO 13715