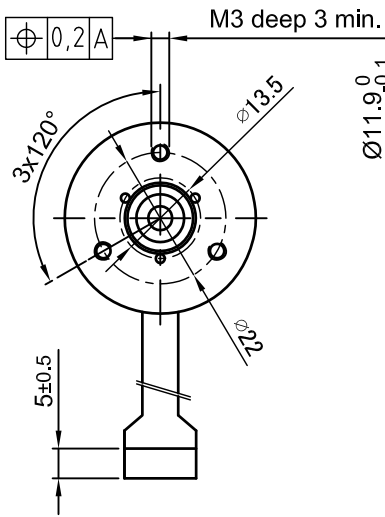
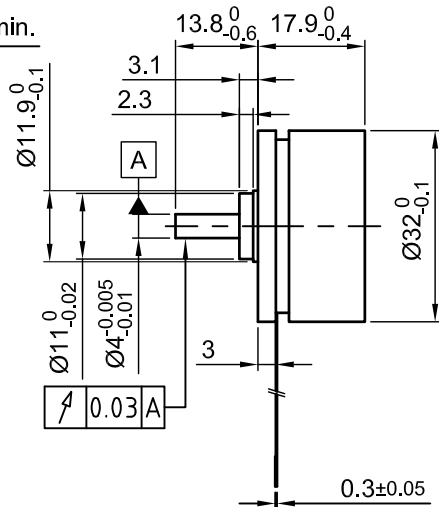


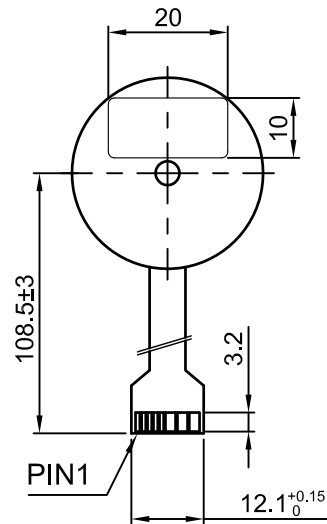
Front view and mounting



Side view



Rear view



PFC pitch: 0,3mm

PFC CONNECTION:

PIN1-4.5-24V DC

PIN2-Hall sensor3

PIN3-Hall sensor1

PIN4-Hall sensor2

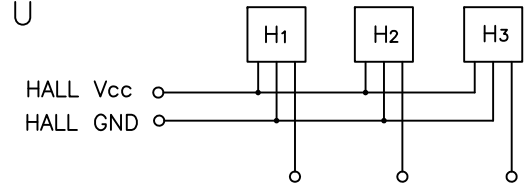
PIN5-GND

PIN6-Motor phase W

PIN7-Motor phase V

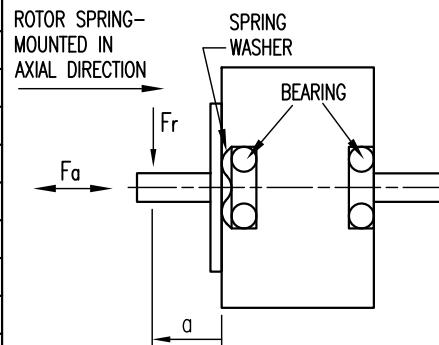
PIN8-Motor phase U

HALL CONNECTION



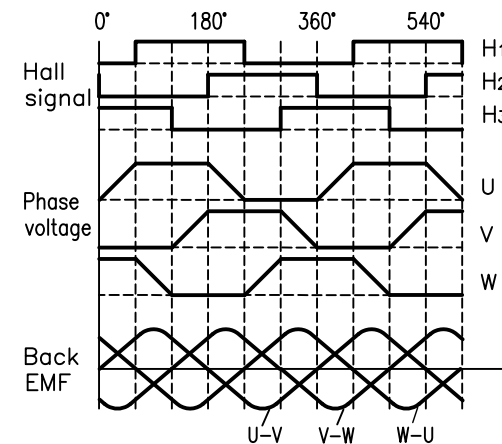
SPECIFICATION	CONNECTION	STAR
NO. OF POL./PHASE		8/3
VOLTAGE RATED (VDC)		24
NO LOAD CURRENT (A)		<0.37
CURRENT RATED/PEAK (A)		0,5/ 1.5
RESISTANCE/PHASE TO PHASE (Ohms) @20°C		13,7 ±10%
INDUCTANCE/PHASE TO PHASE (mH) @1KHz		4.86 ±20% Δ
TORQUE RATED/PEAK (Nm) [lb-in]		0.0255/0.0765 [0,226/0,677]
TORQUE CONSTANT (Nm/A)/BACK-EMF (Vrms/kRPM)		0.051/ 3,65
POWER RATED (W)		7,4
SPEED RATED/NO LOAD (RPM)		2760/4530
ROTOR INERTIA (Kg-m ²) [lb-in ²]		3,5x10 ⁻⁶ [0.0618]
WEIGHT (Kg) [lb]		0.050
TEMPERATURE RISE: MAX.80°C		
AMBIENT TEMPERATURE -20°~ 50°C		
INSULATION RESISTANCE 100 MOhm (UNDER NORMAL TEMPERATURE AND HUMIDITY)		
INSULATION CLASS B 130° [266°F]		
DIELECTRIC STRENGTH 250VAC FOR 1 MIN. (BETWEEN THE MOTOR COILS AND THE MOTOR CASE)		
AMBIENT HUMIDITY MAX. 85% (NO CONDENSATION)		

PERMISSIBLE RADIAL+AXIAL FORCE

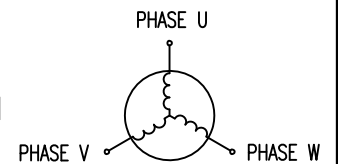


AXIAL-FORCE Fa (N)	Fr=4 max.	
DISTANCE a (mm)	5	
RADIAL-FORCE Fr (N)	14 max.	
SHAFT PLAY (mm)	AXIAL	RADIAL
	0.6	0.02
AT LOAD MAX: (N)	4	4

CW from shaft side



STAR CONNECTION



Nanotec
PLUG & DRIVE

APVD	S.R.	02.08.2016
CHKD		
DRN	J.K.	01.08.2016
SIGNATURE	DATE	

BRUSHLESS DC MOTOR

DWG.NO

DF32M024027-A

A	-	25.10.16	J.K.
REV	DESCRIPTION	DATE	DRN

Surface specification DIN ISO 1302	General tolerances DIN ISO 2768- cH	Work piece edge DIN ISO 13715
---------------------------------------	--	----------------------------------