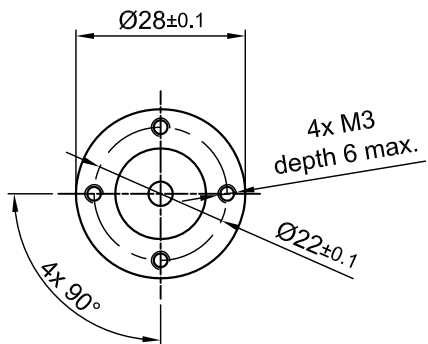
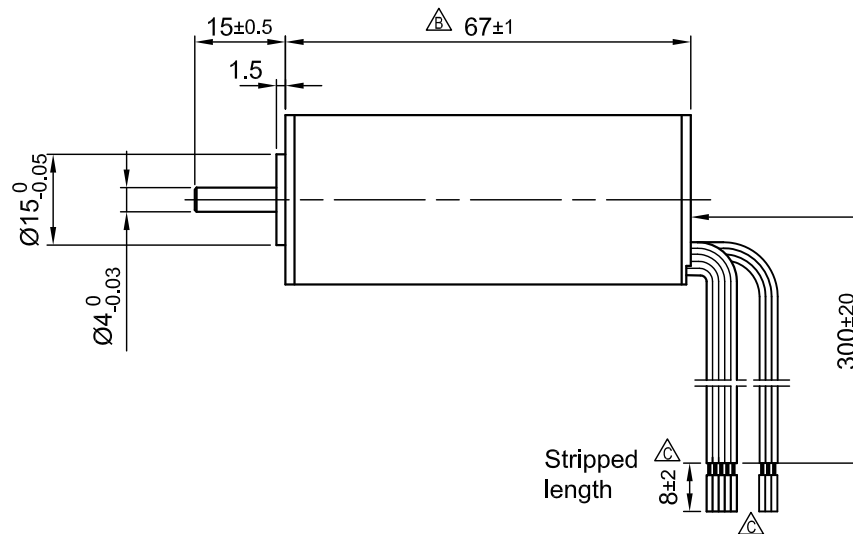


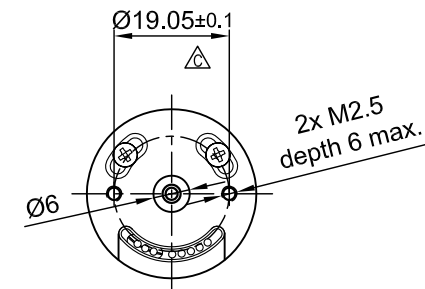
Front view and mounting



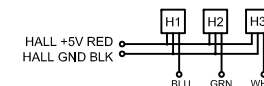
Side view



Rear view

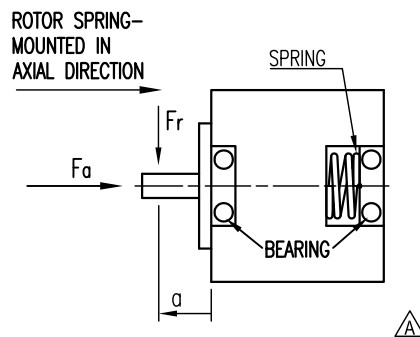


HALL CONNECTION



SPECIFICATION	CONNECTION	STAR
NO. OF POL./PHASE		2/3
VOLTAGE RATED (VDC)		24
CURRENT RATED/PEAK (AMP)		1.35/ 4.0
RESISTANCE/ LINE TO LINE (Ohms) @25°C		1.25 ±10%
INDUCTANCE/ LINE TO LINE (mH) @1KHz		0.16 ±20%
TORQUE RATED/PEAK (mNm)		35/ 105
TORQUE CONSTANT (mNm/A)		26
POWER RATED (W)		29
SPEED RATED/NO LOAD (RPM)		8000/10000 ±10%
ROTOR INERTIA (kg-m ²)		1.6x10 ⁻⁶
WEIGHT (kg)		0.22

PERMISSIBLE RADIAL+AXIAL FORCE

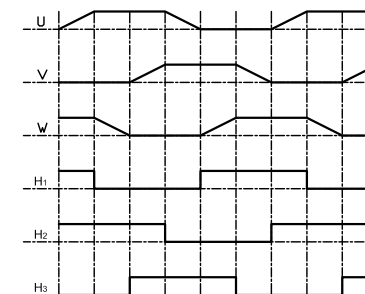


TEMPERATURE RISE: MAX.80°C	AXIAL-FORCE Fa (N)	Fa=2 max.
AMBIENT TEMPERATURE -10°~ 50°C [14°F ~ 122°F]	DISTANCE a (mm)	10
INSULATION RESISTANCE 100 MOhm (UNDER NORMAL TEMPERATURE AND HUMIDITY)	RADIAL-FORCE Fr (N)	5 max.
INSULATION CLASS B 130° [266°F]		AXIAL RADIAL
DIELECTRIC STRENGTH 500VAC FOR 1 MIN. (BETWEEN THE MOTOR COILS AND THE MOTOR CASE)	SHAFT PLAY (mm)	0.14 0.02
AMBIENT HUMIDITY MAX. 85% (NO CONDENSATION)	AT LOAD MAX: (N)	4 4

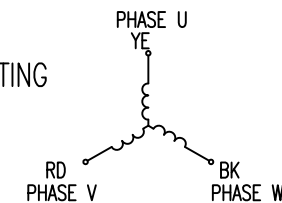
WIRING DIAGRAM

	COLOR	FUNCTION	LEAD GAUGE
MOTOR 2 POL.	YE	U	UL1332 AWG22
	RD	V	
	BK	W	
HALL 6 IMPL. REV.	RD	+5V	UL1332 AWG26
	BU	H1	
	GN	H2	
	WH	H3	
	BK	GND	

CW FROM OUTPUT SHAFT



THREE-PHASE CONNECTING STAR CONNECTION



C	-	13.09.16	A.S.		APVD	G.S.	03.09.15	BRUSHLESS DC MOTOR		
B	-	25.08.16	A.S.		CHKD					
A	-	18.05.16	A.S.	Surface specification DIN ISO 1302	General tolerances DIN ISO 2768- cH	Work piece edge DIN ISO 13715	DRN	A.S.	03.09.15	DWG.NO DS28L024080-A
REV	DESCRIPTION	DATE	DRN				SIGNATURE	DATE		