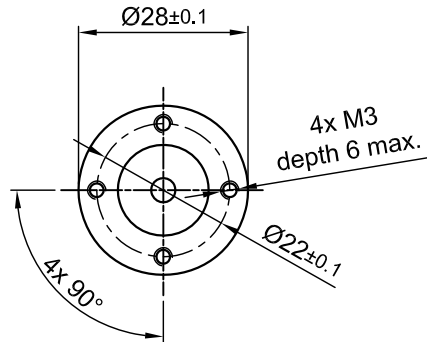
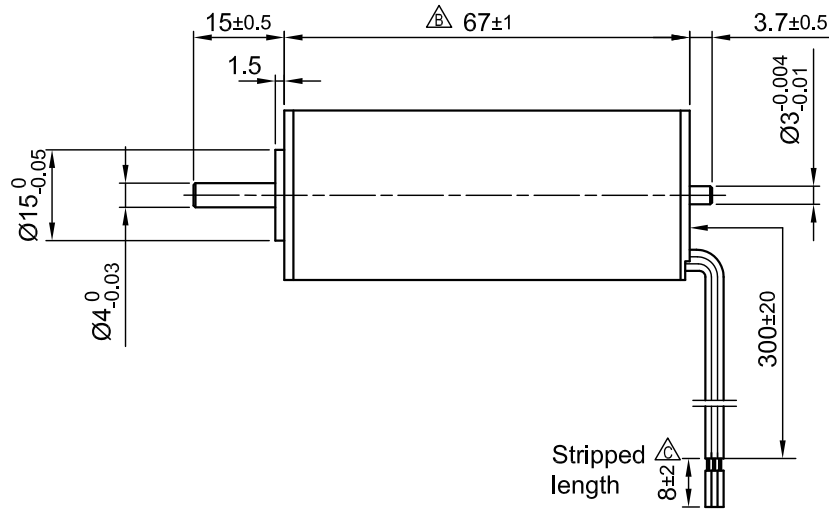


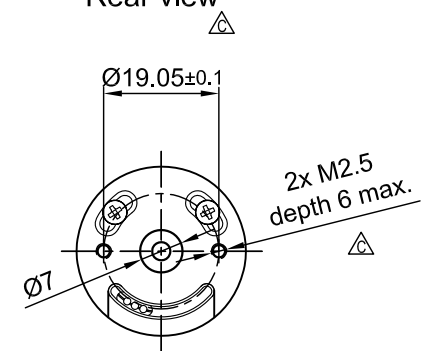
Front view and mounting



Side view



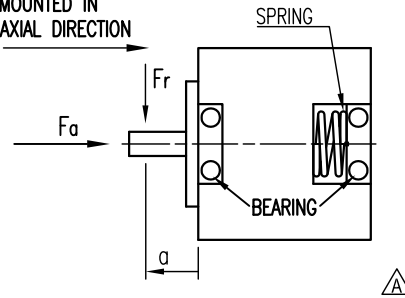
Rear view



SPECIFICATION	CONNECTION	STAR
NO. OF POL./PHASE		2/3
VOLTAGE RATED (VDC)		24
CURRENT RATED/PEAK (AMP)		1.35/ 4.0
RESISTANCE/ LINE TO LINE (Ohms) @25°C		1.25 ±10%
INDUCTANCE/ LINE TO LINE (mH) @1KHz		0.16 ±20%
TORQUE RATED/PEAK (mNm)		35/ 105
TORQUE CONSTANT (mNm/A)		26
POWER RATED (W)		29
SPEED RATED/NO LOAD (RPM)		8000/10000 ±10%
ROTOR INERTIA (kg-m ²)		1.6x10 ⁻⁶
WEIGHT (kg)		0.22

PERMISSIBLE RADIAL+AXIAL FORCE

ROTOR SPRING-MOUNTED IN AXIAL DIRECTION

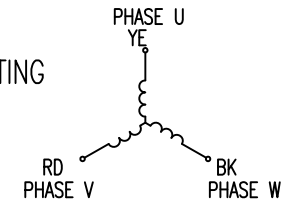


AXIAL-FORCE Fa (N)	Fa=2 max.	
DISTANCE a (mm)	10	
RADIAL-FORCE Fr (N)	5 max.	
	AXIAL	RADIAL
SHAFT PLAY (mm)	0.14	0.02
AT LOAD MAX: (N)	4	4

WIRING DIAGRAM

	COLOR	FUNCTION	LEAD GAUGE
MOTOR 2 POL.	YE	U	UL1332 AWG22
	RD	V	
	BK	W	

THREE-PHASE CONNECTING STAR CONNECTION



C	-	13.09.16	A.S.		APVD	G.S.	12.01.16	BRUSHLESS DC MOTOR		
B	-	25.08.16	A.S.		CHKD					
A	-	18.05.16	A.S.	Surface specification DIN ISO 1302	General tolerances DIN ISO 2768- cH	Work piece edge DIN ISO 13715	DRN	A.S.	12.01.16	DWG.NO DS28L024080-B
REV	DESCRIPTION	DATE	DRN				SIGNATURE	DATE		