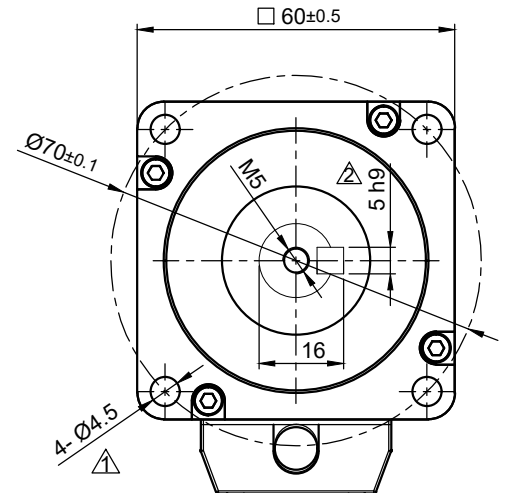
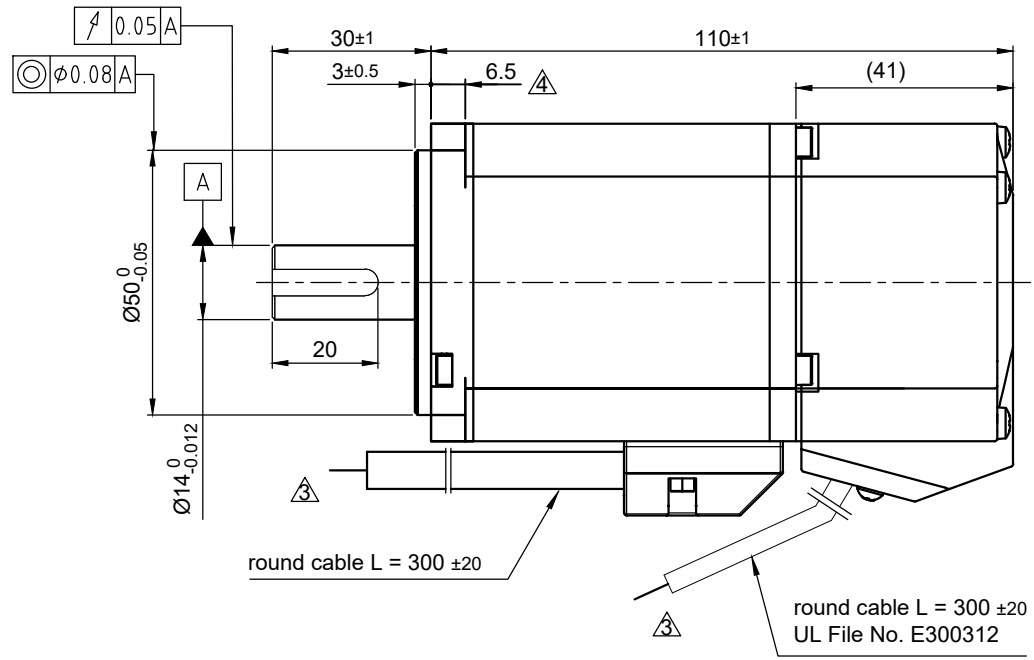
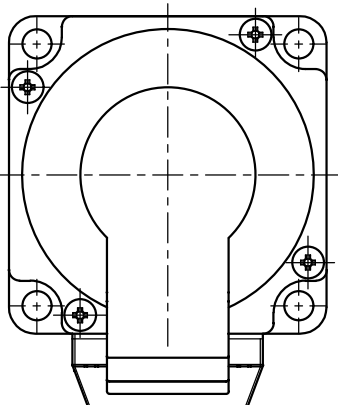
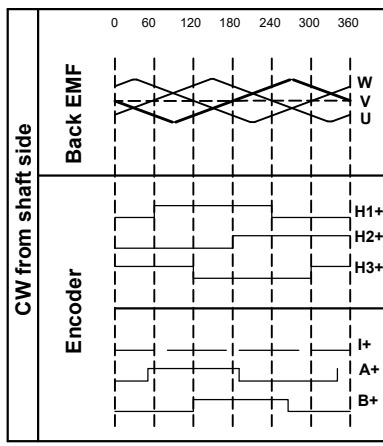


Dimension	Tolerance
5 h9	$0_{-0.030}$



round cable L = 300 ±20

round cable L = 300 ±20
UL File No. E300312

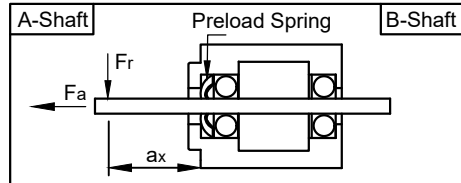


MOTOR SPECIFICATION	
No. of Poles	8
Rated Voltage	V DC 48
Current - No Load / Rated / Peak	A 1.27 / 6 / 18
Resistance Line to Line	±10% Ω 0.56
Inductance Line to Line (1kHz)	±20% mH 1.2
Torque - Rated / Peak	Nm 0.64 / 1.92
Torque Constant	Nm/A 0.107
Rated Power	W 200
Speed - No Load / Rated	±10% rpm 5200 / 3000
Rotor Inertia	kg m ² 21 x10 ⁻⁶

PIN Assignment Encoder	
Colour	Function
RD	+5V
BK	GND
-	-
BN/BK	H1+
BN	H1-
YE	I+
GN	B+
BU/BK	A+
GY/BK	H3+
WH/BK	H2+
YE/BK	I-
GN/BK	B-
BU	A-
GY	H3-
WH	H2-
-	Shield

WIRING DIAGRAM			
	Colour	Function	Lead Gauge
Motor	YE	U	UL758 AWG16
	RD	V	
	BK	W	

ENCODER SPECIFICATION	
Operating Voltage	±5% V DC +5 V
Resolution	cpr 2500
Resolution (cpr with quadrature)	ppr 10000
No. of Channels	3
Signal Type	incremental
Index / Line Driver	yes / yes



Max. Axial Force F_a	N	98
Max. Radial Force F_r ($a_1 = 10$ mm)	N	245
Axial Play	$F_a = 4.0$ N	mm 0.08
Radial Play	$F_r = 4.0$ N	mm 0.02

GENERAL MOTOR SPECIFICATION	
Ambient Temperature	°C -20 ... 40
Max. Temperature Rise (at standstill)	°C 90
Max. Ambient Humidity (non condensing)	% 90
Insulation Class	B
Insulation Resistance	MΩ 100
Dielectric Strength (for 1 min - coil to case)	V AC 500
Protection Class	IP65

ISO 8015	ISO 1302	ISO 2768 cK	ISO 13715
04	add. dimension	Schneid_A	20.12.2023
03	revise drawing	Schneid_A	24.11.2020
02	revise drawing	Schneid_A	08.01.2020
01	Change spec.&Motor L	Garcia_E	29.11.2019
REV	Rev. Text	Name	Date

Date		Name		Weight: ±10% 1.0 kg
11.07.2019	Schneid_A	05.01.2024	Reith_S	
APBA60M048030-E				
04200040		State: Released		A4 Page 1
Rev: 04		CONFIDENTIAL		

