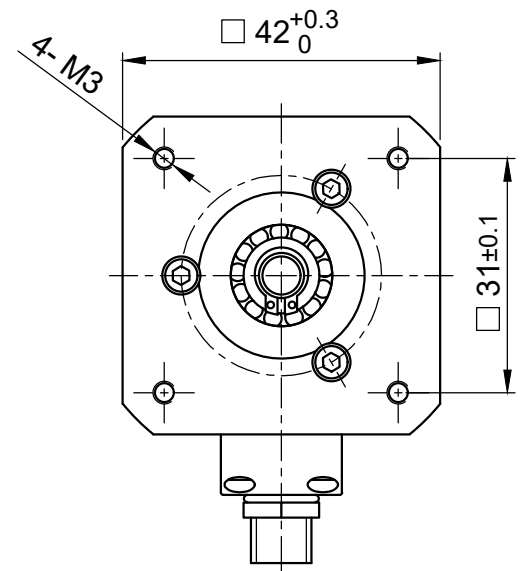
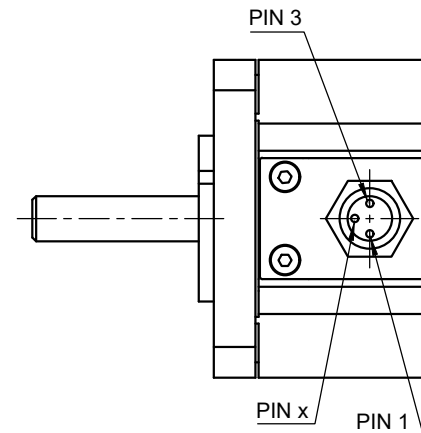


clamp fit:  
 screw tightening torque: 0,5 Nm  
 rec. shaft length: 10-11 mm  
 max. Torque: 0,9 Nm



X

View X



| BRAKE SPECIFICATION              |                            |                         |
|----------------------------------|----------------------------|-------------------------|
| Type:                            | <b>SPRING-LOADED BRAKE</b> |                         |
| Static Holding Torque            | Nm                         | ≥0.4                    |
| Backlash                         | °                          | <1                      |
| Rated Power                      | W                          | 6.9                     |
| Operating Voltage                | ±10% V DC                  | 24                      |
| Release Voltage                  | max. V DC                  | 16.8                    |
| Re-Engage Voltage                | min. V DC                  | 0.5                     |
| Resistance                       | ±7% Ω                      | 83                      |
| Switch-Off Time                  | ms                         | 30                      |
| Switch-On Time                   | ms                         | 50                      |
| Max. Axial Force                 | N                          | 20                      |
| Max. Radial Force (shaft middle) | N                          | 50                      |
| Max. Speed                       | rpm                        | 4200                    |
| Moment of Inertia                | kg m <sup>2</sup>          | 0,53 x 10 <sup>-6</sup> |

| PIN Assignment Brake |        |
|----------------------|--------|
| PIN1                 | Brake+ |
| PIN3                 | Brake- |
| PINx                 | n.c.   |

| GENERAL BRAKE SPECIFICATION                |      |            |
|--|------|------------|
| Ambient Temperature                        | °C   | -10 ... 60 |
| Insulation Class                           |      | F          |
| Insulation Resistance                      | MΩ   | >100       |
| Dielectric Strength                        | V AC | 1200       |
| Protection Class (except for shaft output) |      | IP65       |

| ISO 8015                       | ISO 1302  | ISO 2768 cK | ISO 13715 | Weight: ~0.28 kg |           |
|--------------------------------|-----------|-------------|-----------|------------------|-----------|
|                                |           |             | Date      | Name             |           |
|                                |           |             | Drawn     | 17.05.2022       | Schneid_A |
|                                |           |             | Reviewed  | 02.05.2023       | Sejdini_B |
|                                |           |             | Released  | 11.05.2023       | Micheli_M |
| <b>Nanotec</b><br>PLUG & DRIVE |           |             |           | 20001486         |           |
| REV                            | Rev. Text | Name        | Date      | State: Released  |           |
|                                |           |             | Rev: 00   | CONFIDENTIAL     |           |

**BRAKE-BCD42-0,4-5**