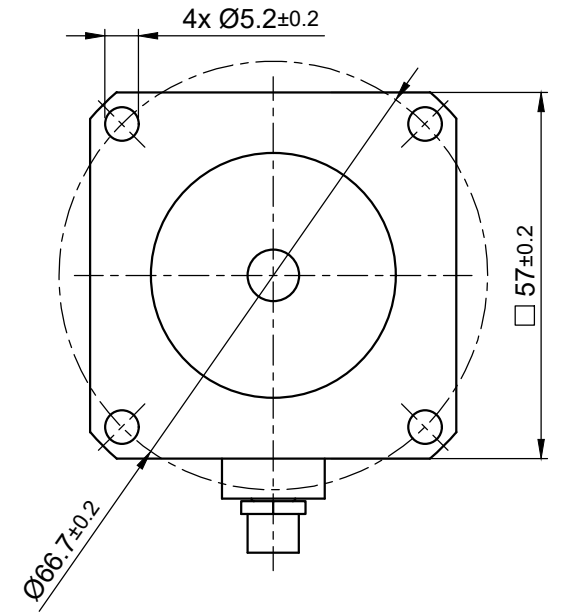
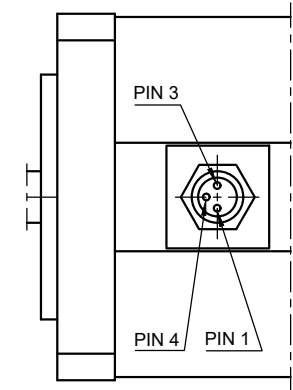


clamp fit:  $\triangle$   
 screw tightening torque: 1.8 Nm  $\triangle$   
 rec. shaft length: 10 - 14 mm  
 max. Torque: 5.5 Nm  $\triangle$



View X



BRAKE SPECIFICATION		
Type:	<b>SPRING-LOADED BRAKE</b>	
Static Holding Torque	Nm	≥1,5
Backlash	°	<0.5
Rated Power	W	7.2
Operating Voltage	±10% V DC	24
Release Voltage	max. V DC	16.8
Re-Engage Voltage	min. V DC	0.5
Resistance	±7% Ω	80
Switch-Off Time	ms	20
Switch-On Time	ms	60
Max. Axial Force	N	15
Max. Radial Force (shaft middle)	N	75
Max. Speed	rpm	3600
Moment of Inertia	kg m <sup>2</sup>	4.63 x10 <sup>-6</sup>

Assignment Brake	
PIN1	Brake+
PIN3	Brake-
PIN4	n.c.

GENERAL BRAKE SPECIFICATION		
Ambient Temperature	°C	-10 ... 60
Insulation Class		F
Insulation Resistance	MΩ	100
Dielectric Strength	V AC	1500
Protection Class (except for shaft output)		IP65

ISO 8015	ISO 1302	ISO 2768 cK	ISO 13715
05 add. values	Schneid_A	11.07.2023	Date Name
04 change torque 3.8 to 2.1	Schneid_A	18.01.2022	Drawn 30.03.2021 Schneid_A
03 change shaft length	Micheli_M	30.08.2021	Reviewed 27.05.2021 Micheli_M
02 Datasheet updated	Micheli_M	12.08.2021	Released 27.05.2021 Micheli_M
01 Dim. 14 max. to min.	Schneid_A	04.08.2021	
REV	Rev. Text	Name	Date



Weight: ~0.53 kg	
<b>BRAKE-BCD56-1,5-8</b>	
20000975	
State: Released	Rev: 05 CONFIDENTIAL