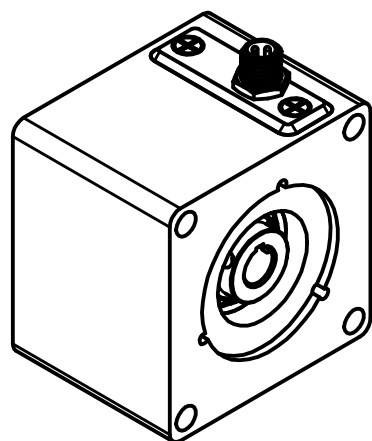
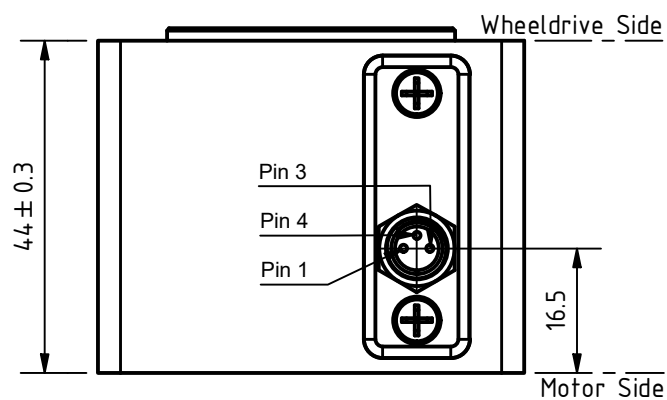
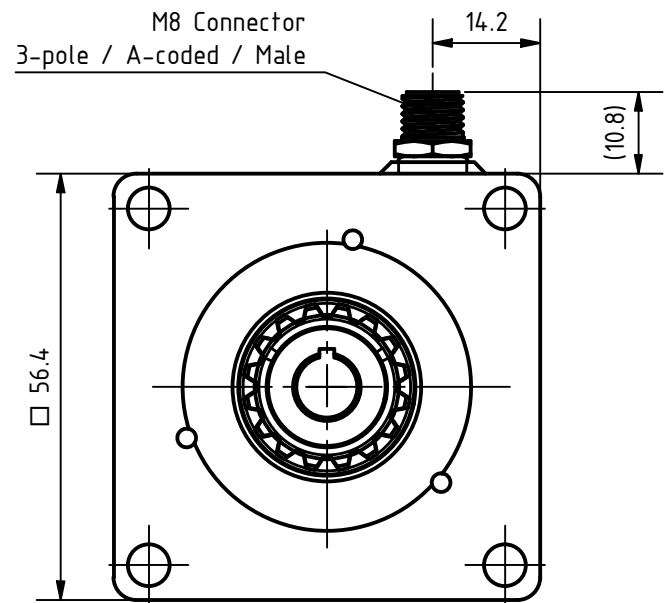
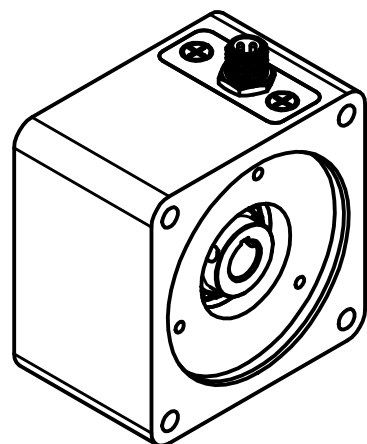
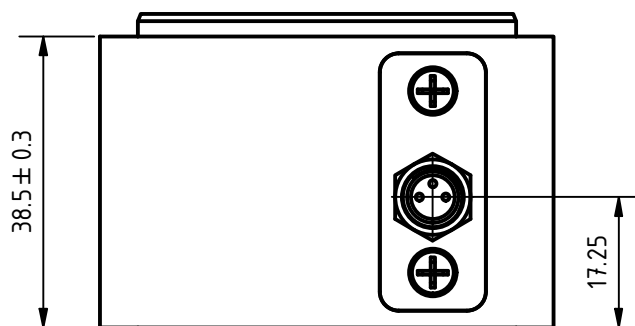
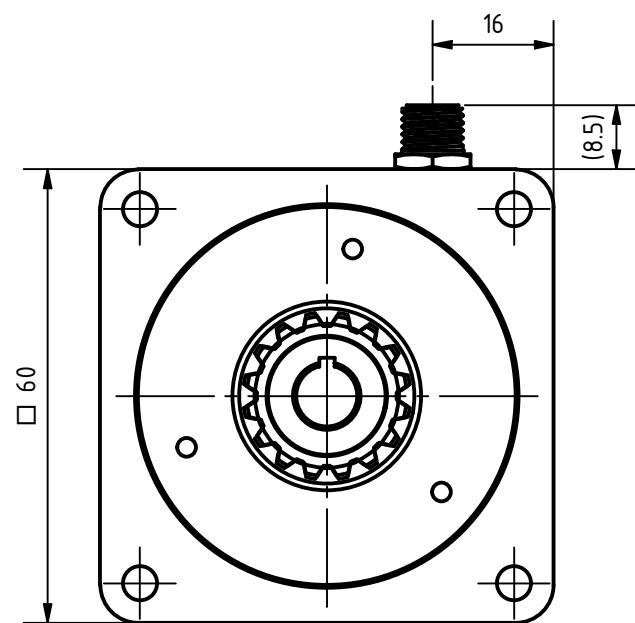


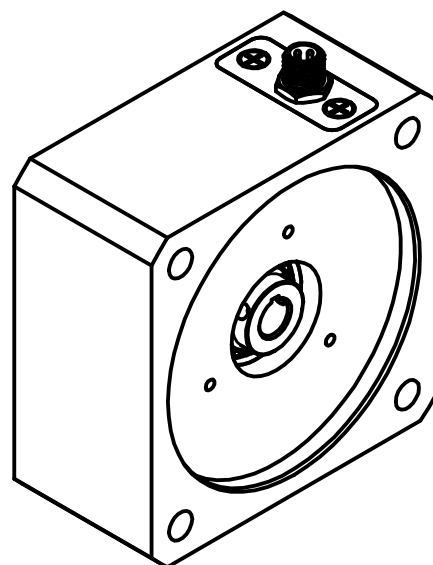
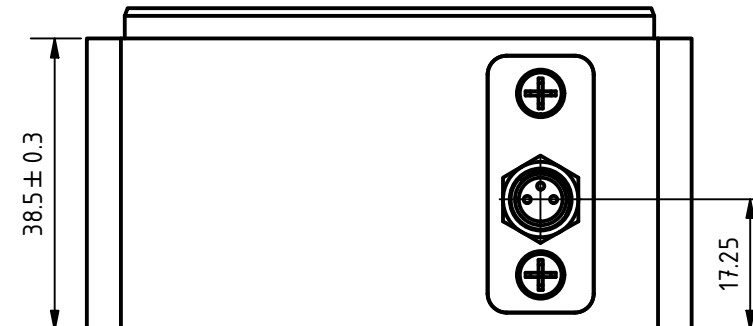
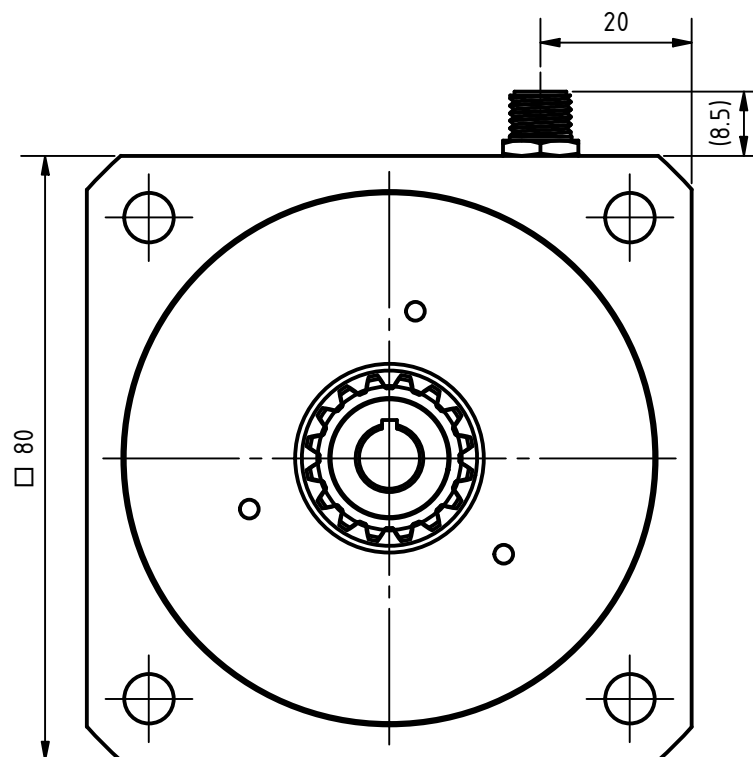
For Nema23



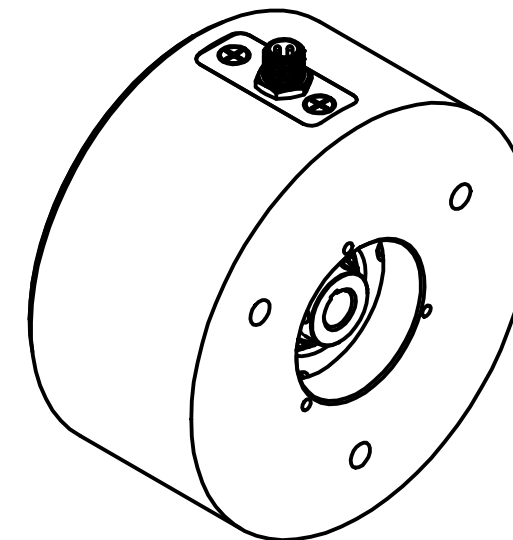
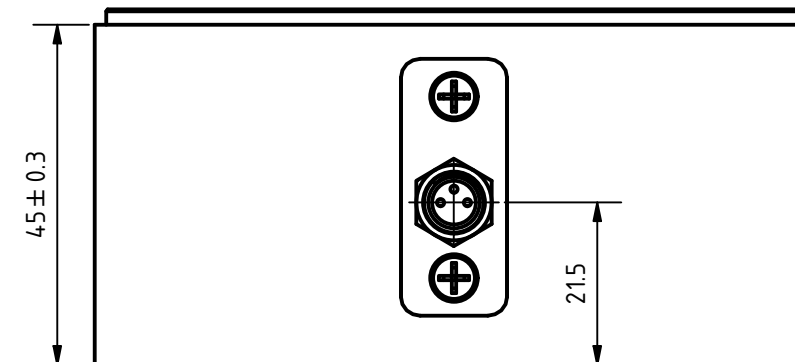
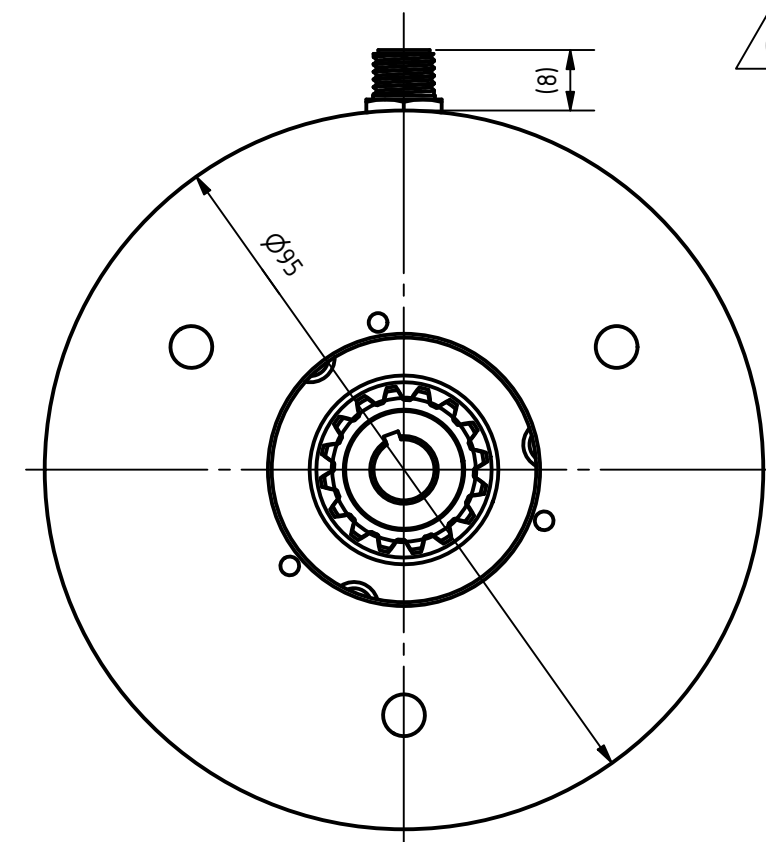
For APBA60



For DB80



For DFA90



01

BRAKE-BWA-x.x-8-DYN	x.x = 0.8	x.x = 1.3	Pin Assignment
Static Holding Torque	Min. 0.8 Nm	1.3 Nm	Pin 1 Brake
No. of Dynamic Stops	~2500		Pin 3 Brake/GND
Operating Voltage	± 10% 24 Vdc		Pin 4 N.C.
Coil Resistance at 20°C	± 7% 62.5Ω		
Power Consumption at 20°C	± 7% 9.2 W		
Release voltage at 20°C	Max. 18.5 Vdc		
Re-Engage Voltage at 20°C	Max. 0.5 Vdc		
Insulation Class	F (155°C)		
Backlash	Max. 1°		

ISO 8015	ISO 1302	ISO 2768 cK	ISO 13715	Weight: Nema23 0.45kg / APBA60 0.5kg / DB80 0.65kg / DFA90 0.46kg
			Date	Name
			Drawn	29.10.2020 Knoll_J
			Reviewed	25.11.2020 Micheli_M
			Released	25.11.2020 Micheli_M
01	Added For DFA90	Rehse_P	03.11.2021	
REV	Rev. Text	Name	Date	

20000707		Scale: 1 : 1
State: Released	Rev: 01	CONFIDENTIAL

