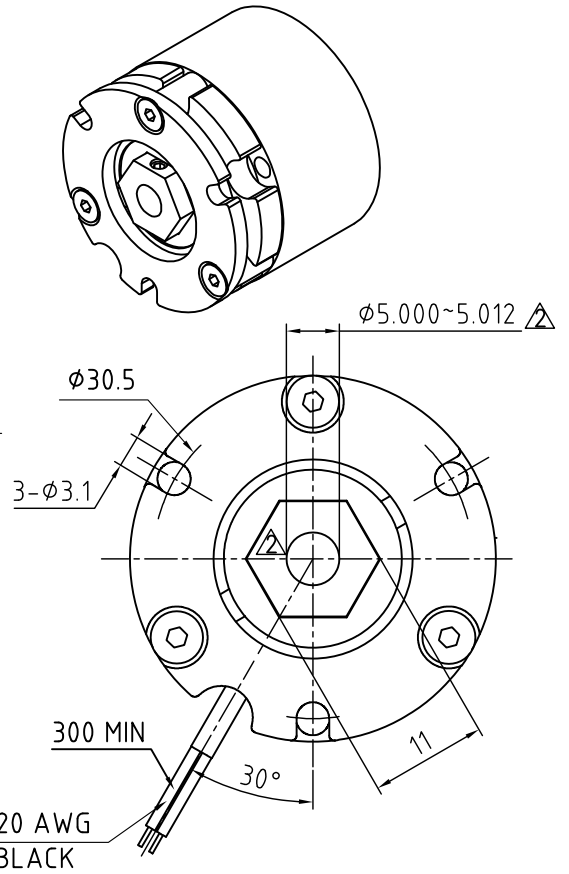
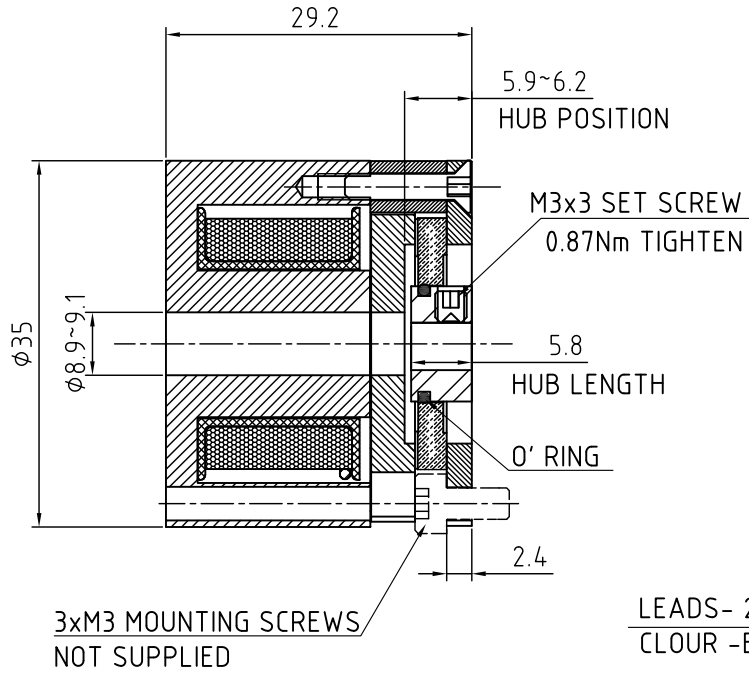
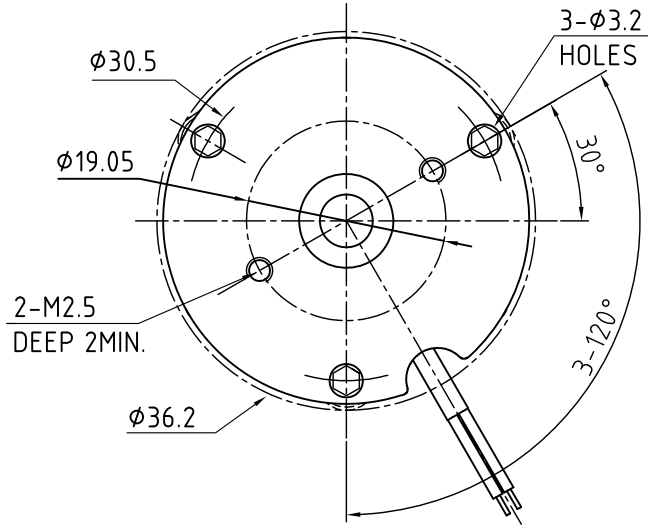


DIMENSION (UNIT : mm)



SPECIFICATION:

STATIC TORQUE(DRY)	=0.35Nm MIN.
OPERATING VOLTAGE	=24Vdc±10%
COIL RESISTANCE(AT 20°)	= 97Ω±7%
POWER CONSUMPTION(AT 20°)	= 5.9W±7%
ELECTRICAL INSULATION	=CLASS F
RELEASE VOLTAGE (AT 20°)	= 18Vdc MAX.
RE-ENGAGE VOLTAGE (AT 20°)	= 0.5Vdc MIN.
BACK PLAY	<2° $\triangle$

2	WITHOUT D-CUT	11.04.17	GYQ
1	BACK PLAY	22.04.16	GYQ
A	-	18.09.15	GYQ
REV	DESCRIPTION	DATE	APVD



BRAKE-BWA-0,35-5

APVD	S.G.	27.07.15
CHKD		
DRN	GYQ	27.07.15
SIGNATURE	DATE	

BWA BRAKE

DWG.NO

BRAKE-BWA-0,35-5