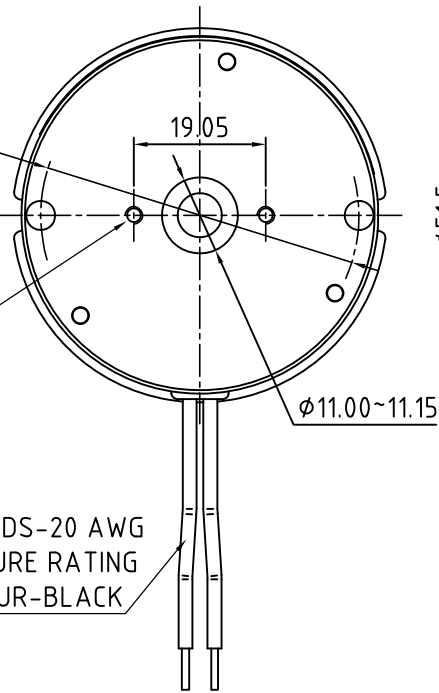


DIMENSION (UNIT : mm)

2 HOLES 4.2~4.4
EQUISPACED AS
SHOWN ON 46.0 PCD

2-M2.5
DEEP 2MIN.

FLYING LEADS-20 AWG
TEMPERATURE RATING
105°C COLOUR-BLACK



28.2
APPROX

2.6~2.8

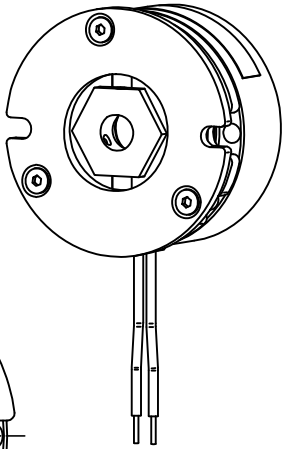
φ51.5

300MIN.

0.3~0.6
HUB POSITION
FROM MOTOR FACE

φ11.00~11.15

φ54



HUB(SUPPLIED LOOSE)
SEE DETAIL

HUB DETAIL

SPECIFICATION:

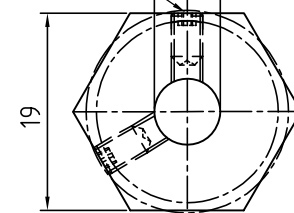
STATIC TORQUE(DRY)	=1.5Nm MIN.
OPERATING VOLTAGE	=24Vdc±10%
COIL RESISTANCE(AT 20°)	= 52Ω±7%
POWER CONSUMPTION(AT 20°)	=11W±7%
ELECTRICAL INSULATION	=CLASS F
RELEASE VOLTAGE (AT 20°)	=18Vdc MAX.
RE-ENGAGE VOLTAGE (AT 20°)	=0.5Vdc MIN.
BACK PLAY	<2° ▲

2xDIN 916-M3x5-45H

6.35~6.365

O' RING

19



1	BACK PLAY	11.04.16	GYQ
6	B	29.05.15	GYQ
	A	14.04.15	GYQ
REV	DESCRIPTION	DATE	APVD



BRAKE-BWA-1,5-6,35

APVD	S.G.	24.03.15
CHKD		
DRN	GYQ	24.03.15
SIGNATURE	DATE	

BWA BRAKE

DWG.NO
BRAKE-BWA-1,5-6,35