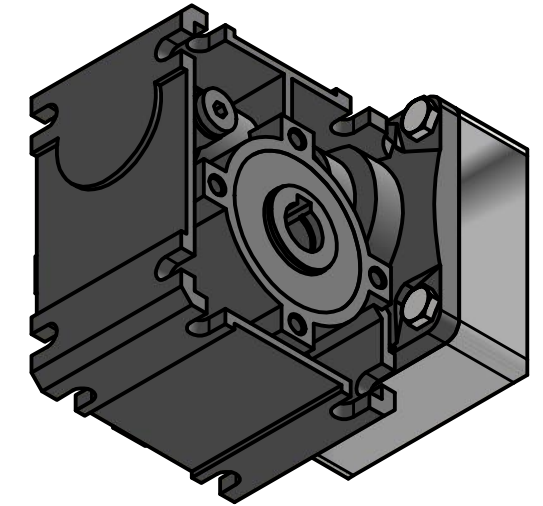
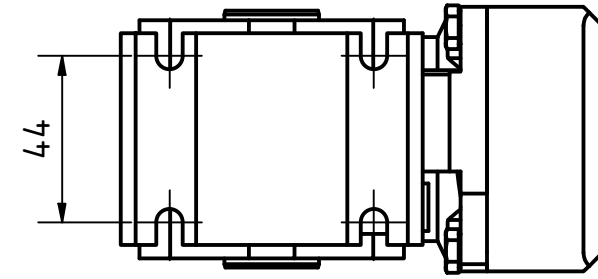
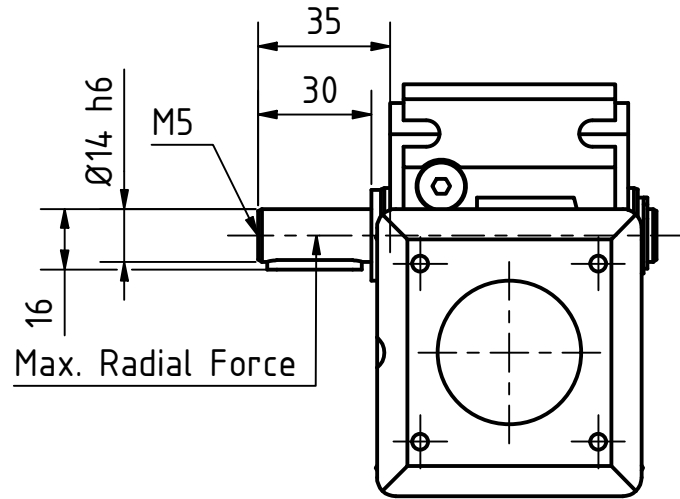
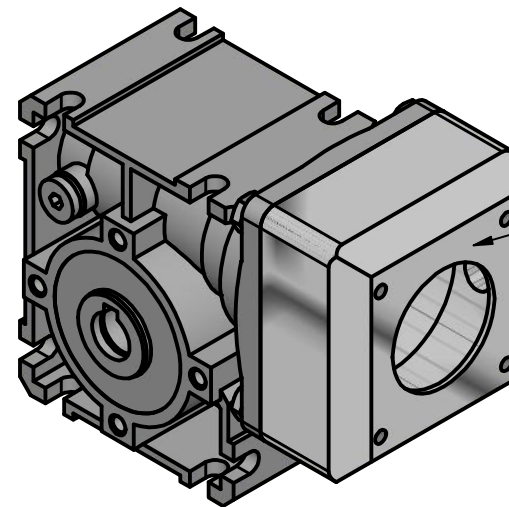
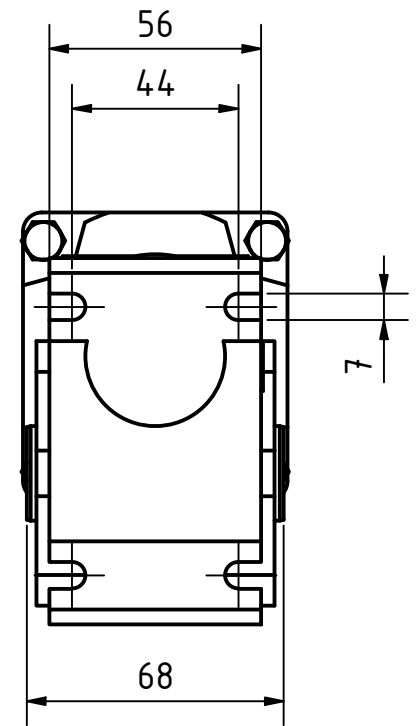
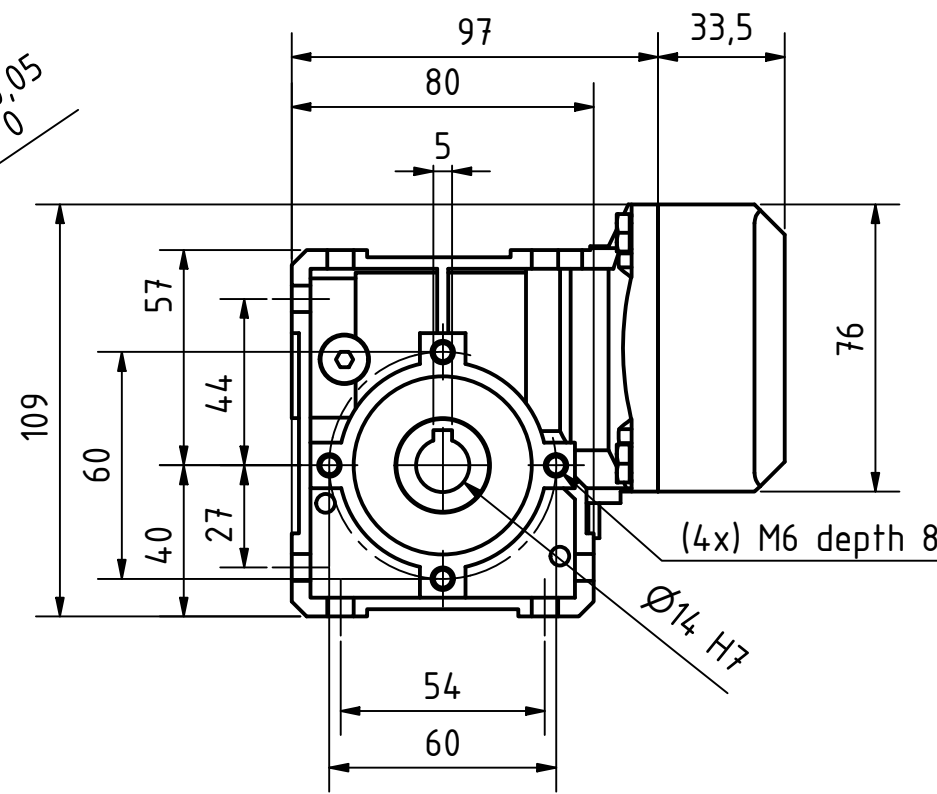
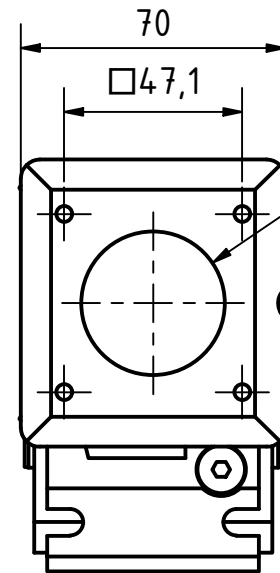
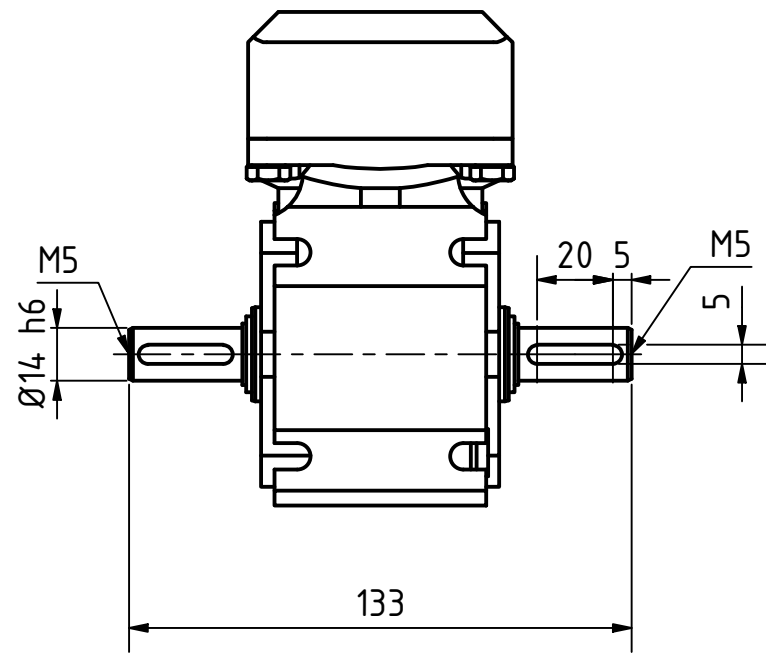


**Single shaft MG-EW-GSGE60 (included)**  
 Shaft direction can be switched

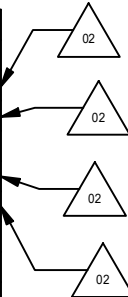


**Double Shaft MG-DW-GSGE60 (not included)**  
 Needs to be purchased separately



Gearbox flange:  
 GZ-60-SGE-1

		Reduction Ratio			
		50	25	15	5
Nominal Output Torque	Nm	39	38	44	35
Max. Output Torque (1800 rpm)	Nm	26	25	29	23
Nominal Input Speed	rpm	250	250	250	250
Max. Input Speed	rpm	1800	1800	1800	1800
Efficiency	%	45	63	71	86
Lifetime	h	10000	10000	10000	10000
Max. Axial Force	N	1800	1800	1800	1800
Max. Radial Force (single shaft center)	N	1800	1800	1600	1100
Max. Radial Force (hollow shaft center)	N	3600	3600	3200	2200



ISO 8015	ISO 1302	ISO 2768-1 cK	ISO 13715	Material:	Weight: ~1.7
			Date	GSGE60 - Nema23 Worm Gear	
			Name		
			Drawn	06.10.2021	Schneid_A
			Reviewed	27.01.2022	Sejdini_B
			Released	27.01.2022	Sejdini_B
02	change values	Schneid_A	03.02.2022	20001199	
REV	Rev. Text	Name	Date	Scale: 1 : 2	
				State: Released	A3 Page 1
				Rev: 02	CONFIDENTIAL

