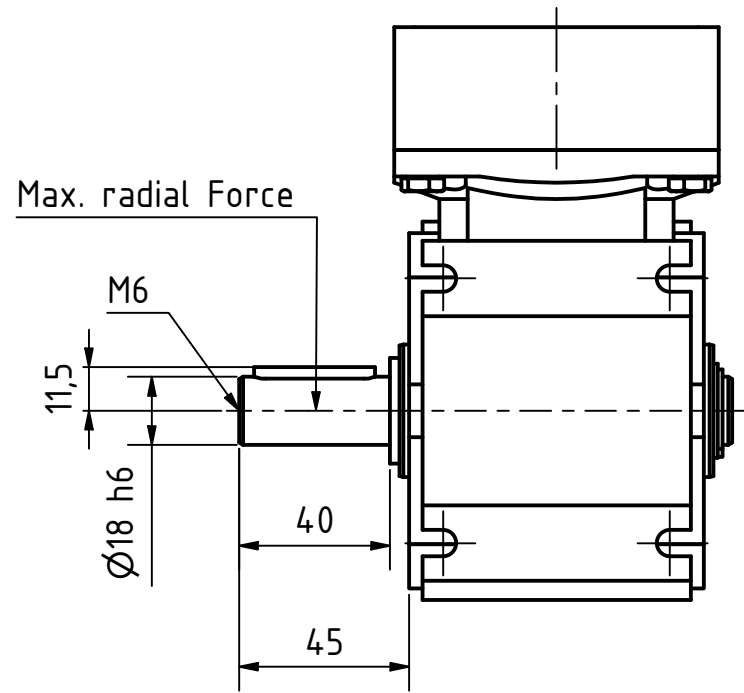
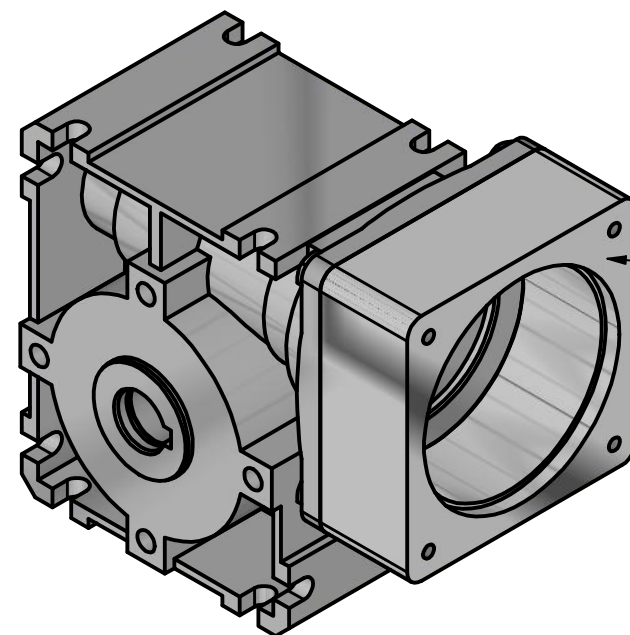
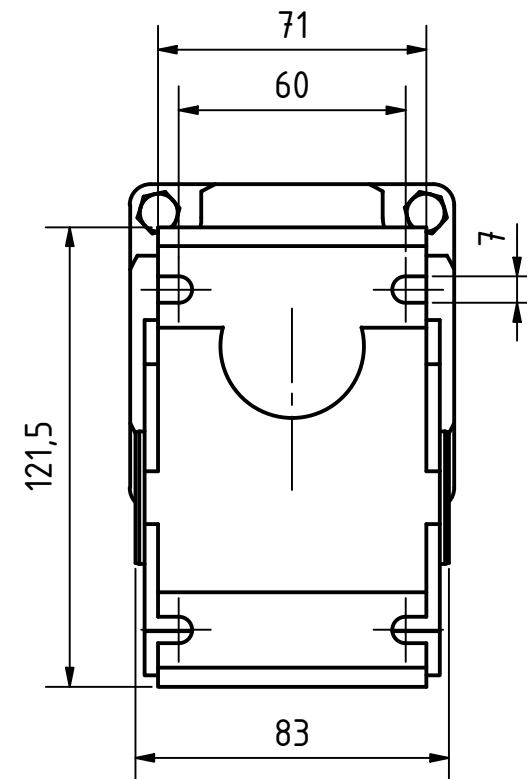
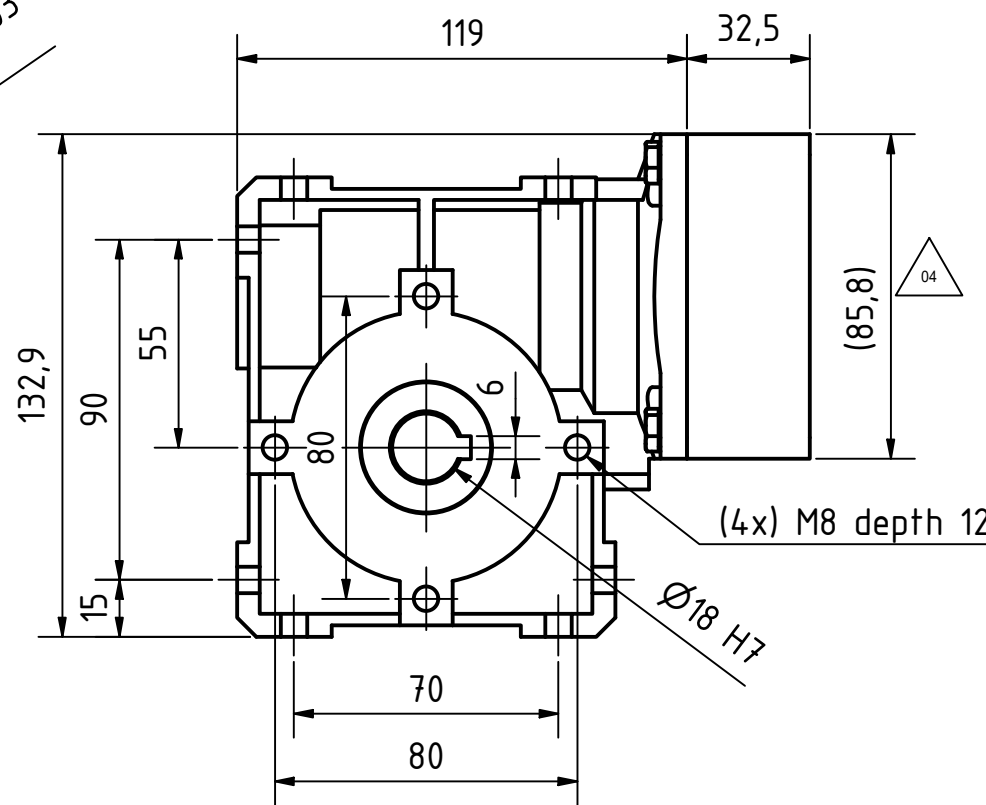
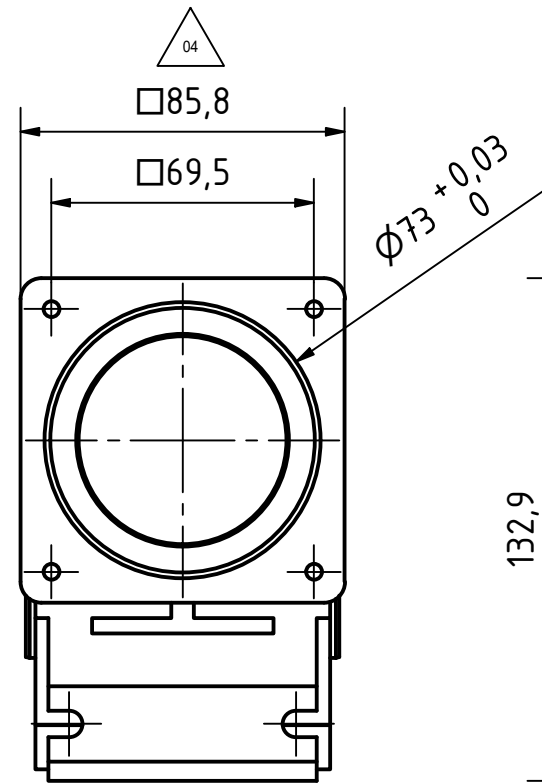
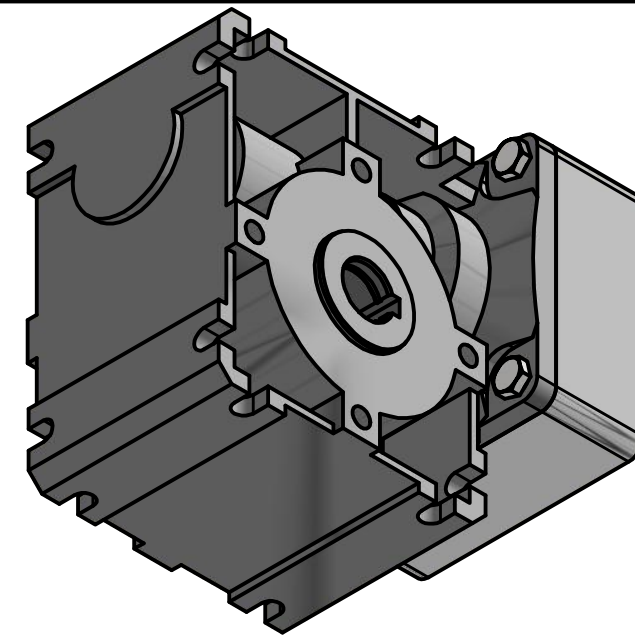
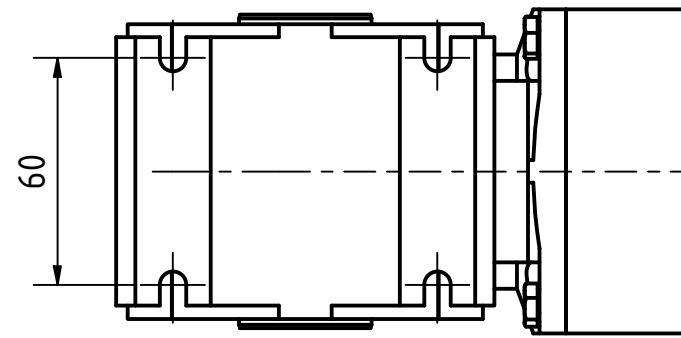
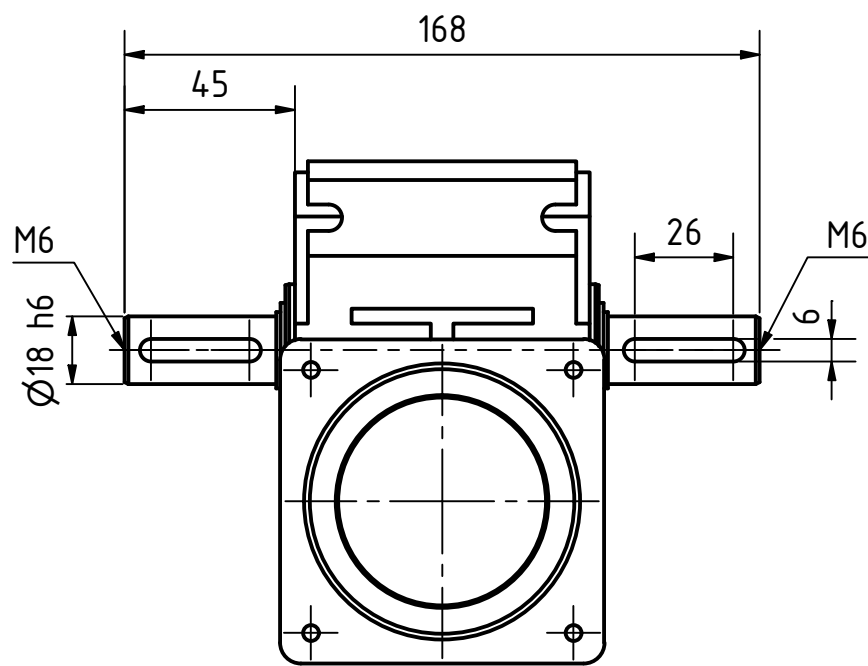


Single shaft MG-EW-GSGE80 (included)  
 Shaft direction can be switched

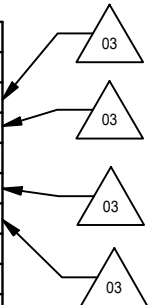


Double Shaft MG-DW-GSGE80 (not included)  
 Needs to be purchased separately



GZ-80-SGE-1

		Reduction Ratio		
		50	25	12,5
Nominal Output Torque	Nm	64	64	61
Max. Output Torque (1800 rpm)	Nm	43	42	41
Nominal Input Speed	rpm	250	250	250
Max. Input Speed	rpm	1800	1800	1800
Efficiency	%	50	68	80
Lifetime	h	10000	10000	10000
Max. Axial Force	N	3200	3200	3200
Max. Radial Force (single shaft center)	N	2800	2800	2800
Max. Radial Force (hollow shaft center)	N	5600	5600	5600



ISO 8015	ISO 1302	ISO 2768-1 cK	ISO 13715	Material:	Weight: ~3.0kg
			Date	GSGE80 - Nema34 Worm Gear	
			Drawn	20001128	
04	add. dimension	Schneid_A	16.03.2022	Reviewed	06.10.2021
03	change values	Schneid_A	03.02.2022	Released	06.10.2021
02	correct EW/ DW 60 to 80	Schneid_A	28.07.2021		
REV	Rev. Text	Name	Date		
				State: For Review	Rev: 04
				CONFIDENTIAL	Scale: 1 : 2
				A3 Page 1	