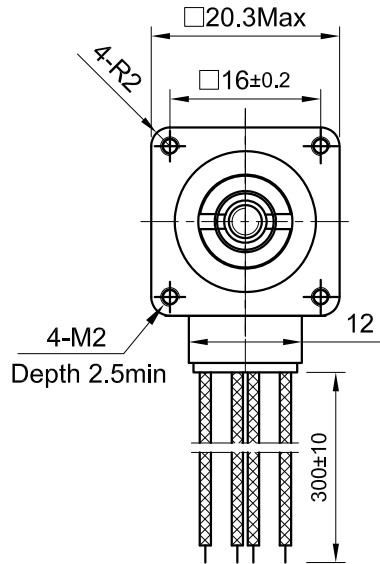
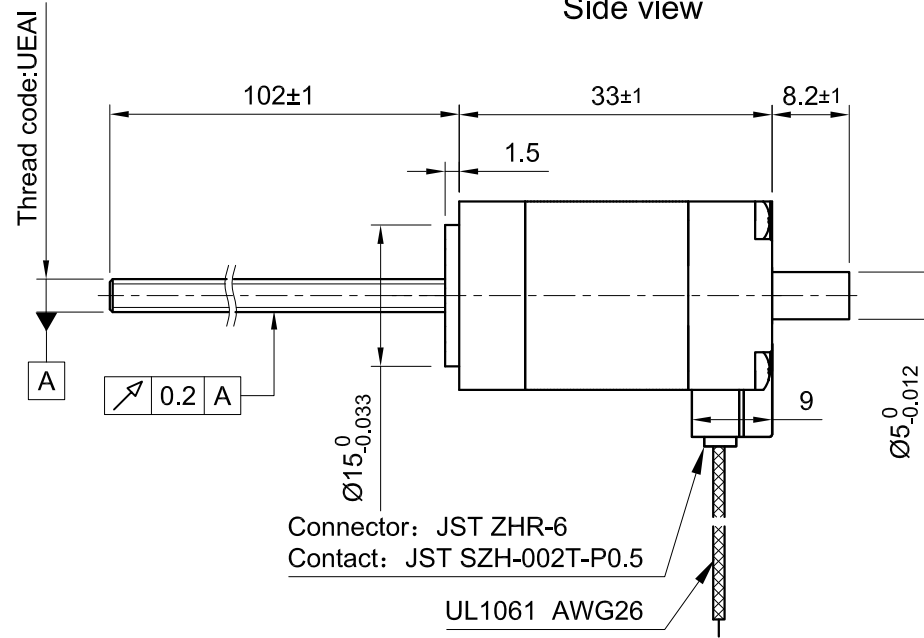


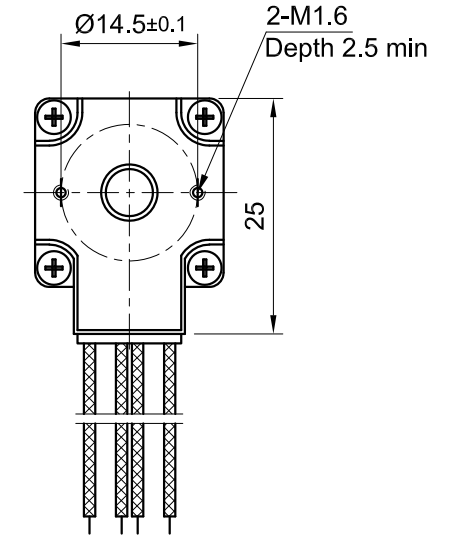
Front view and mounting



Side view



Rear view



| SPECIFICATION | CONNECTION | BIPOLAR |
|--|------------|----------------|
| AMPS/PHASE | | 0.37* |
| RESISTANCE/PHASE (Ohms)@25°C | | 6.4±10% |
| INDUCTANCE/PHASE (mH) @1KHz | | 2.6±20% |
| THREAD DIAMETER (mm) [in] | | 3.5052 [0.138] |
| THREAD LEAD (mm) [in] | | 0.3048 [0.012] |
| RATED FORCE (N)/MAX. FORCE (N) | | 3 / 63 |
| RESOLUTION (mm/STEP) | | 0.001524 |
| MAX. SPEED (mm/sec.) AT 24V | | 5.1 |
| WEIGHT (Kg) [lb] | | 0.063 [0.139] |
| TEMPERATURE RISE: MAX.80°C (MOTOR STANDSTILL; FOR 2 PHASE ENERGIZED) | | |
| AMBIENT TEMPERATURE -10°~ 50°C [14°F ~ 122°F] | | |
| INSULATION RESISTANCE 100 MOhm (UNDER NORMAL TEMPERATURE AND HUMIDITY) | | |
| INSULATION CLASS B 130° [266°F] | | |
| DIELECTRIC STRENGTH 500VAC FOR 1 MIN. (BETWEEN THE MOTOR COILS AND THE MOTOR CASE) | | |
| AMBIENT HUMIDITY MAX. 85% (NO CONDENSATION) | | |

Please regard the application note at www.nanotec.com for further informations.

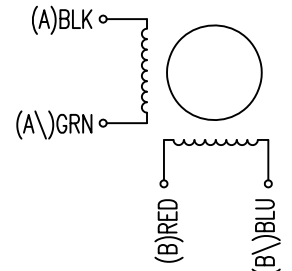
* Base motor current is 0.6A.

| TYPE OF CONNECTION (EXTERN) | MOTOR | |
|-----------------------------|-------|---------|
| | LEADS | WINDING |
| BIPOLAR | BLK | A |
| A — | GRN | A\ |
| A\ — | RED | B |
| B — | BLU | B\ |
| B\ — | | |

WIRING DIAGRAM

FULL STEP 2 PHASE-Ex., WHEN FACING MOUNTING END (X)

| STEP | A | B | A\ | B\ | CCW | CW |
|------|---|---|----|----|-----|----|
| 1 | + | + | - | - | ↓ | ↑ |
| 2 | - | + | + | - | ↓ | ↑ |
| 3 | - | - | + | + | ↓ | ↑ |
| 4 | + | - | - | + | ↓ | ↑ |



| | | |
|-----------|-------------|----------|
| APVD | P.R. | 16.12.22 |
| CHKD | GYQ | 16.12.22 |
| DRN | X T | 16.12.22 |
| SIGNATURE | | DATE |

LINEAR ACTUATOR

DWG.NO

LSA201S06-B-UEAI-102

| | | | |
|-----|-------------|----------|-----|
| A | - | 14.07.23 | X T |
| REV | DESCRIPTION | DATE | DRN |

Surface specification DIN ISO 1302
 General tolerances DIN ISO 2768-cH
 Work piece edge DIN ISO 13715