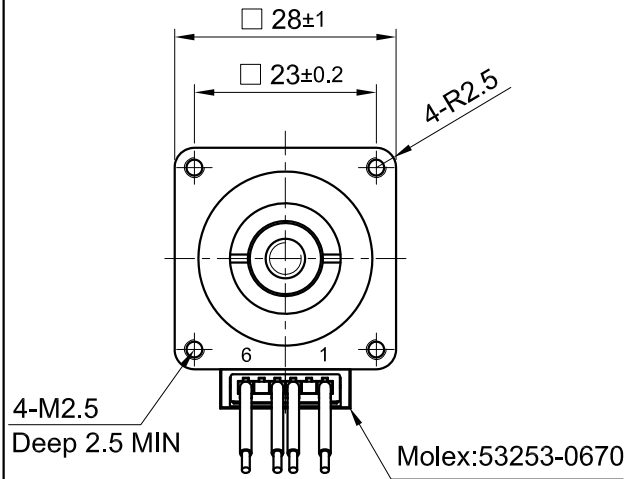
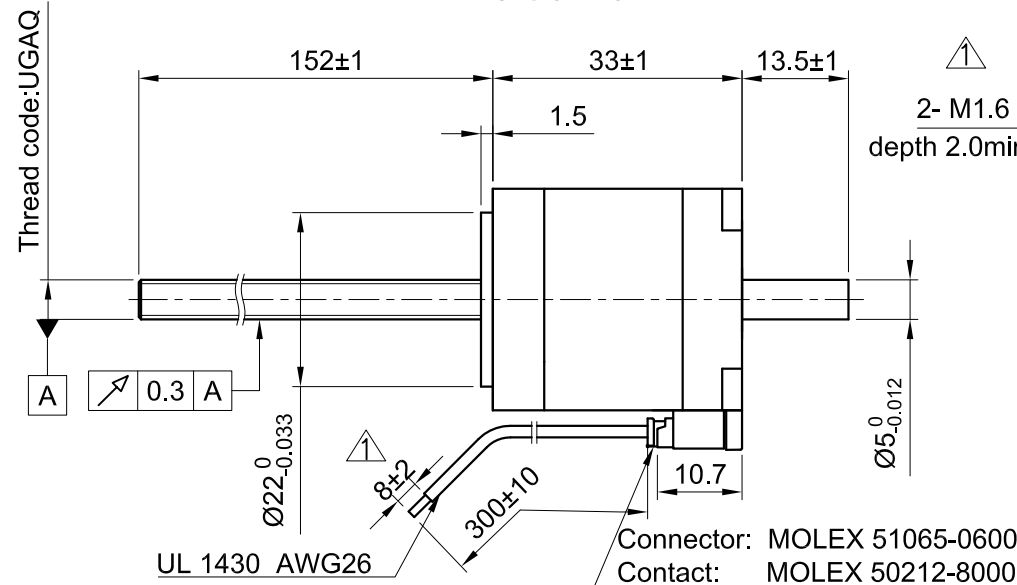


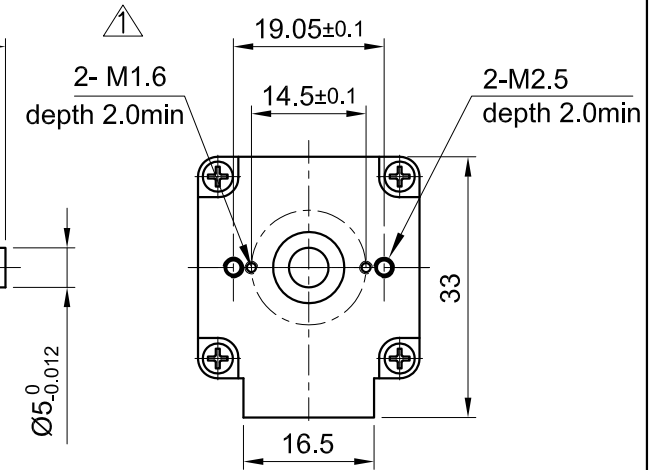
Front view and mounting



Side view



Rear view



CONNECTION		BIPOLAR
SPECIFICATION		
AMPS/PHASE		1.0
RESISTANCE/PHASE (Ohms)@25°C		2.7±15%
INDUCTANCE/PHASE (mH) @1KHz		2.5±20%
THREAD DIAMETER (mm) [in]	\triangle	4.7625 [0.1875]
THREAD LEAD(mm) [in]	\triangle	0.635 [0.025]
THRUST (N) [lbf]		210 [47.19]
RESOLUTION (mm/STEP)		0.003175
MAX. SPEED (mm/sec.) AT 24V	\triangle	19
WEIGHT (Kg) [lb]		0.13 [0.28]
TEMPERATURE RISE: MAX.80°C (MOTOR STANDSTILL; FOR 2 PHASE ENERGIZED)		
AMBIENT TEMPERATURE -10°~ 50°C [14°F ~ 122°F]		
INSULATION RESISTANCE 100 MOhm (UNDER NORMAL TEMPERATURE AND HUMIDITY)		
INSULATION CLASS B 130° [266°F]		
DIELECTRIC STRENGTH 500VAC FOR 1 MIN. (BETWEEN THE MOTOR COILS AND THE MOTOR CASE)		
AMBIENT HUMIDITY MAX. 85% (NO CONDENSATION)		

Please regard the application note at www.nanotec.com for further informations.

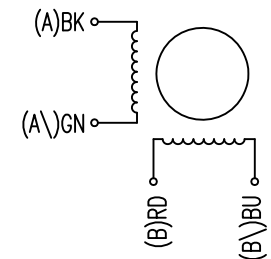


TYPE OF CONNECTION (EXTERN)	MOTOR		
	CONNECTOR PIN NO.	LEADS	WINDING
BIPOLAR			
A —	1	BK	A
A \ —	3	GN	A \
B —	4	RD	B
B \ —	6	BU	B \

WIRING DIAGRAM

FULL STEP 2 PHASE-Ex., WHEN FACING MOUNTING END (X)

STEP	A	B	A \	B \	CCW
1	+	+	-	-	↓ ↑ CW
2	-	+	+	-	
3	-	-	+	+	
4	+	-	-	+	



REV	DESCRIPTION	DATE	APVD	Surface specification DIN ISO 1302			General tolerances DIN ISO 2768-CH			Work piece edge DIN ISO 13715			APVD	P.R.	DATE	DWG.NO
2	Remove shaft play adjustable	11.03.19	X T												19.04.18	
1	-	07.12.18	X T												19.04.18	
B	-	05.09.18	X T												19.04.18	
REV	DESCRIPTION	DATE	APVD										SIGNATURE	DATE		



LINEAR ACTUATOR

LSA281S10-B-UGAQ-152