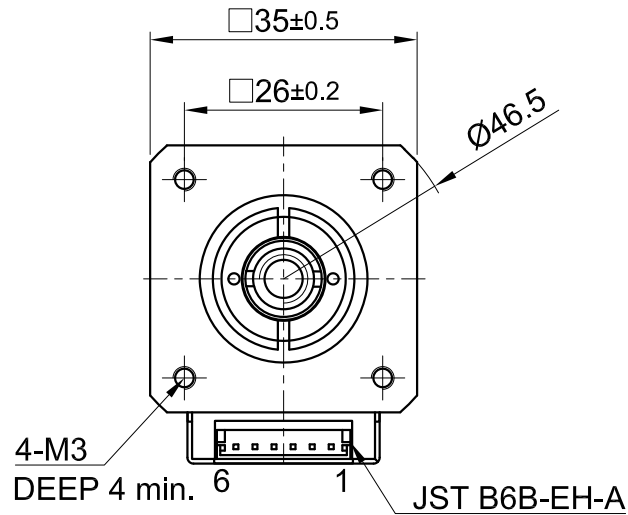
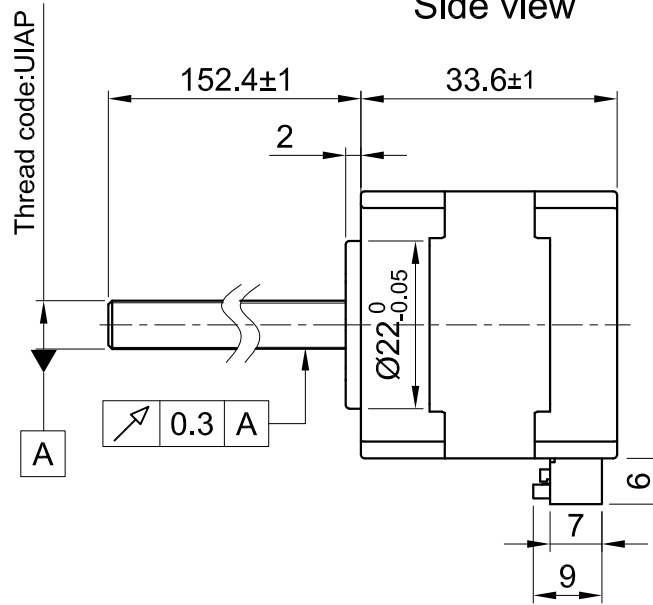


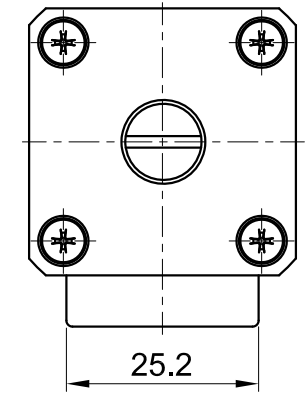
Front view and mounting



Side view



Rear view



| SPECIFICATION  | CONNECTION | BIPOLAR           |
|--|------------|-------------------|
| AMPS/PHASE   |            | 1.2               |
| RESISTANCE/PHASE (Ohms)@25°C   |            | 1.85±15%          |
| INDUCTANCE/PHASE (mH) @1KHz  |            | 2.46±20%          |
| THREAD DIAMETER (mm) [in]  |            | 5.55625 [0.21875] |
| THREAD LEAD(mm) [in]   |            | 0.6096 [0.024]    |
| THRUST (N)   |            | 242.4             |
| RESOLUTION (mm/STEP)   |            | 0.003048          |
| MAX. SPEED (mm/sec.) AT 24V  |            | 13                |
| WEIGHT (Kg) [lb]   |            | 0.19 [0.42]       |
| TEMPERATURE RISE: MAX.80°C (MOTOR STANDSTILL; FOR 2 PHASE ENERGIZED)               |            |                   |
| AMBIENT TEMPERATURE -10~ 50°C [14°F ~ 122°F]                                       |            |                   |
| INSULATION RESISTANCE 100 MOhm (UNDER NORMAL TEMPERATURE AND HUMIDITY)             |            |                   |
| INSULATION CLASS B 130° [266°F]  |            |                   |
| DIELECTRIC STRENGTH 500VAC FOR 1 MIN. (BETWEEN THE MOTOR COILS AND THE MOTOR CASE) |            |                   |
| AMBIENT HUMIDITY MAX. 85% (NO CONDENSATION)  |            |                   |

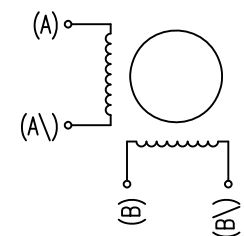
Please regard the application note at [www.nanotec.com](http://www.nanotec.com) for further informations.

| MOTOR             |         |
|-------------------|---------|
| CONNECTOR PIN NO. | WINDING |
| 1 (NC)            |         |
| 2                 | A       |
| 3                 | A\      |
| 4                 | B       |
| 5                 | B\      |
| 6 (NC)            |         |

FULL STEP 2 PHASE-Ex.,  
WHEN FACING MOUNTING END (X)

| STEP | A | B | A\ | B\ |   | CCW |
|------|---|---|----|----|---|-----|
| 1    | + | + | -  | -  | ↓ | ↑   |
| 2    | - | + | +  | -  |   |     |
| 3    | - | - | +  | +  | ↑ | ↓   |
| 4    | + | - | -  | +  |   |     |

WIRING DIAGRAM



|     |             |          |     |   |                                       |                                  |           |                        |          |        |                      |
|-----|-------------|----------|-----|---|---------------------------------------|----------------------------------|-----------|------------------------|----------|--------|----------------------|
| B   | -           | 30.06.20 | X T | <br><b>Nanotec</b> <sup>®</sup><br>PLUG & DRIVE | APVD                                  | P.R.                             | 04.06.19  | <b>LINEAR ACTUATOR</b> |          |        |                      |
| A   | -           | 04.12.19 | X T |   | CHKD                                  | GYQ                              | 04.06.19  |                        |          |        |                      |
| REV | DESCRIPTION | DATE     | DRN | Surface specification<br>DIN ISO 1302           | General tolerances<br>DIN ISO 2768-cH | Work piece edge<br>DIN ISO 13715 | DRN       | X T                    | 04.06.19 | DWG.NO | LSA351S12-A-UIAP-152 |
|     |             |          |     |   |                                       |                                  | SIGNATURE | DATE                   |          |        |                      |