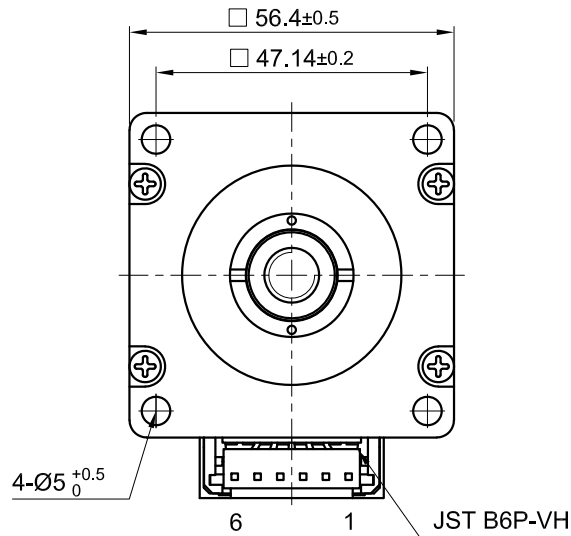
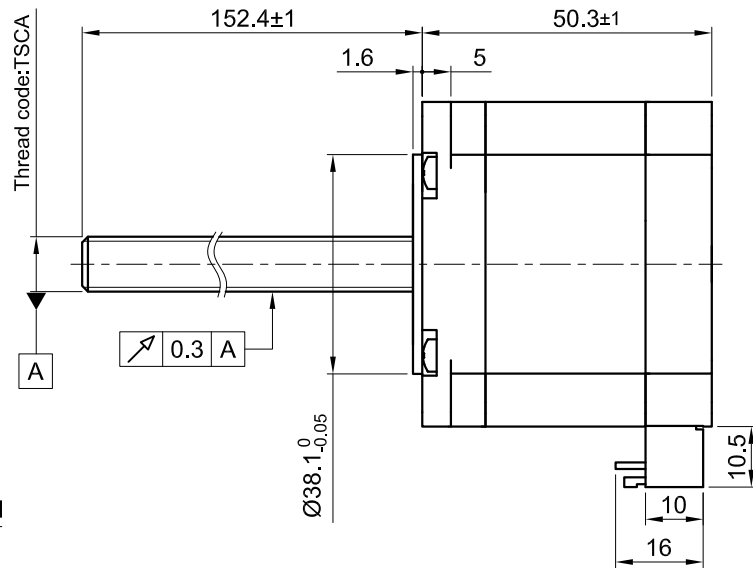


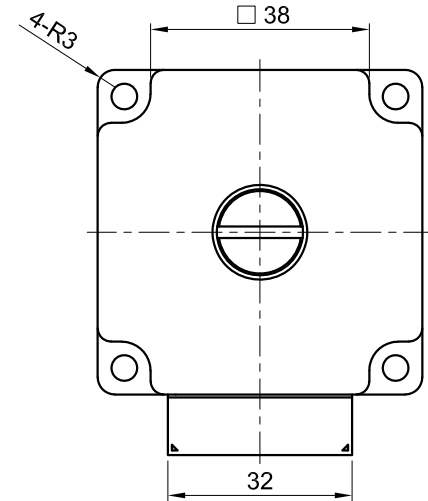
Front view and mounting



Side view



Rear view



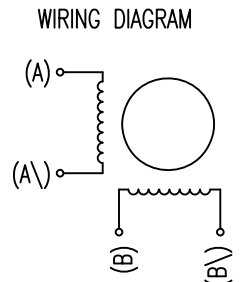
| SPECIFICATION  | CONNECTION | BIPOLAR    |
|--|------------|------------|
| AMPS/PHASE   |            | 2.0        |
| RESISTANCE/PHASE (Ohms)@25°C   |            | 1.5±15%    |
| INDUCTANCE/PHASE (mH) @1KHz  |            | 4.3±20%    |
| THREAD DIAMETER (mm) [in]  |            | 10 [0.394] |
| THREAD LEAD(mm) [in]   |            | 2 [0.0787] |
| THRUST (N)   |            | 938.9      |
| RESOLUTION (mm/STEP)   |            | 0.01       |
| MAX. SPEED (mm/sec.) AT 24V  |            | 30         |
| WEIGHT (Kg) [lb]   |            | 0.7 [1.54] |
| TEMPERATURE RISE: MAX.80°C (MOTOR STANDSTILL; FOR 2 PHASE ENERGIZED)               |            |            |
| AMBIENT TEMPERATURE -10~ 50°C [14°F ~ 122°F]                                       |            |            |
| INSULATION RESISTANCE 100 MOhm (UNDER NORMAL TEMPERATURE AND HUMIDITY)             |            |            |
| INSULATION CLASS B 130° [266°F]  |            |            |
| DIELECTRIC STRENGTH 500VAC FOR 1 MIN. (BETWEEN THE MOTOR COILS AND THE MOTOR CASE) |            |            |
| AMBIENT HUMIDITY MAX. 85% (NO CONDENSATION)  |            |            |

Please regard the application note at [www.nanotec.com](http://www.nanotec.com) for further informations.

| MOTOR             |         |
|-------------------|---------|
| CONNECTOR PIN NO. | WINDING |
| 1                 | A       |
| 3                 | A\      |
| 4                 | B       |
| 6                 | B\      |

FULL STEP 2 PHASE-Ex., WHEN FACING MOUNTING END (X)

| STEP | A | B | A\ | B\ | CCW | CW |
|------|---|---|----|----|-----|----|
| 1    | + | + | -  | -  | ↓   | ↑  |
| 2    | - | + | +  | -  | ↓   | ↑  |
| 3    | - | - | +  | +  | ↓   | ↑  |
| 4    | + | - | -  | +  | ↓   | ↑  |



| REV | DESCRIPTION | DATE     | DRN | <br><b>Nanotec</b> <sup>®</sup><br>PLUG & DRIVE |                                       |                                  | APVD      | P.R.       | 23.04.20 | <b>LINEAR ACTUATOR</b><br>DWG.NO<br>LSA561S20-A-TSCA-152 |
|-----|-------------|----------|-----|---|---------------------------------------|----------------------------------|-----------|------------|----------|--|
| B   | -           | 08.04.22 | X T | Surface specification<br>DIN ISO 1302           | General tolerances<br>DIN ISO 2768-cH | Work piece edge<br>DIN ISO 13715 | CHKD      | <b>GYQ</b> | 23.04.20 |  |
| A   | -           | 09.10.20 | X T |   |                                       |                                  | DRN       | <b>XT</b>  | 23.04.20 |  |
| REV | DESCRIPTION | DATE     | DRN |   |                                       |                                  | SIGNATURE | DATE       |          |  |