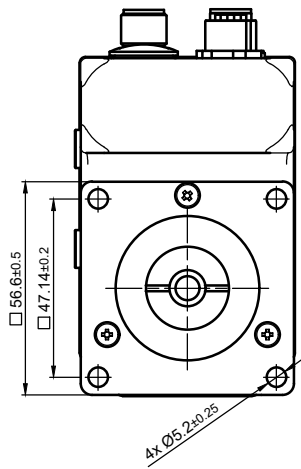
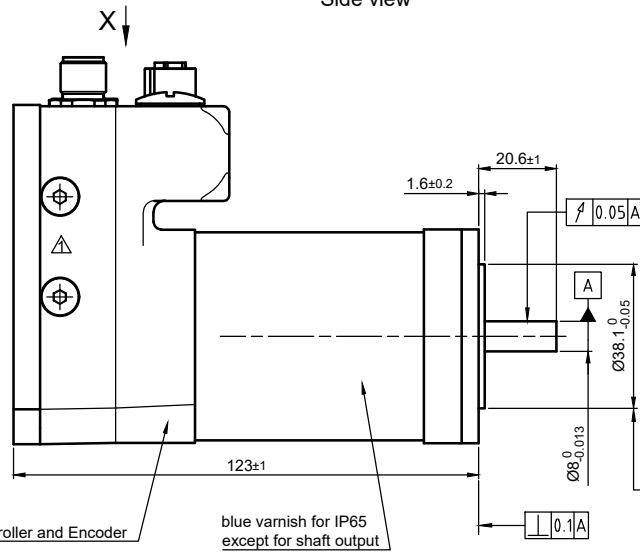


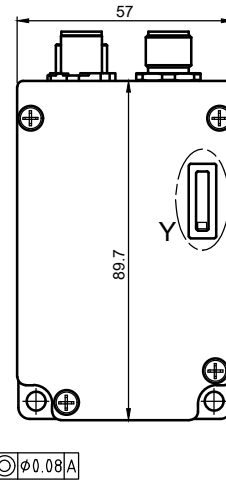
Front view and mounting



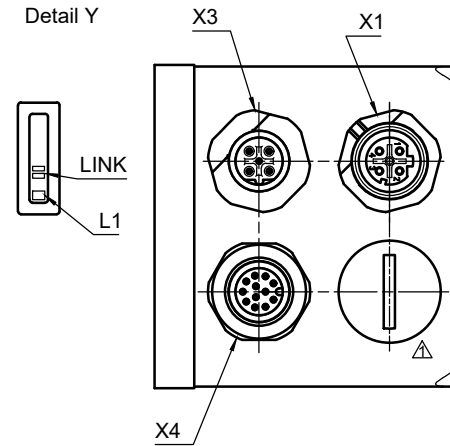
Side view



Rear view



View X (Detail)



X1 Modbus TCP	
M12 / 4-Pole / D-Coding / female	
Pin No.	Function
1	TD+
2	RD+
3	TD-
4	RD-

X3 POWER	
M12 / 5-Pole / B-Coding / male	
Pin No.	Function
1	+UB (12-48V)
2	+UB (12-48V)
3	GND
4	GND
5	N.C.

X4 IO	
M12 / 12-Pole / A-Coding / male	
Pin No.	Function
1	GND
2	Input 1 (+5V/+24V)
3	Input 2 (+5V/+24V)
4	Input 3 (+5V/+24V)
5	Input 4 (+5V/+24V)
6	Input 5 (+5V/+24V)
7	Input 6 (+5V/+24V)
8	Analog Input (0-10V/0-20mA)
9	Output 1 (open drain)
10	Output 2 (open drain)
11	+5V Voltage Supply (max. 100mA)
12	+UB Logic (24V)

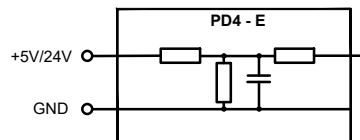
MOTOR SPECIFICATION

No. of Poles	6	
Rated Voltage	V DC	48
Operating Voltage - Min. / Max.	V DC	12 48
Current - Rated / Peak	A	6 18
Torque - Rated / Peak	Nm	0.6 1.8
Torque Constant	Nm/A	0.1
Power - Rated / Peak	W	220 660
Speed - No Load / Rated	±10% rpm	4500 3500
Singleturn Encoder Resolution	bit	12
Rotor Inertia	kg m ²	17.3 x10 ⁻⁶

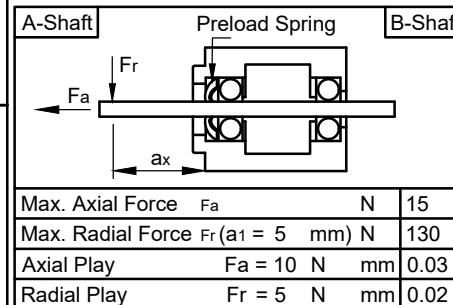
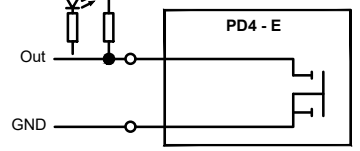
GENERAL MOTOR SPECIFICATION

GENERAL MOTOR SPECIFICATION		MODBUS TCP
Interface		MODBUS TCP
Ambient Temperature	°C	-10 ... 40
Switch-off Temperature	°C	75
Max. Ambient Humidity (non condensing)	%	85
Insulation Class		B
Insulation Resistance	MΩ	100
Dielectric Strength (for 1 min - coil to case)	V AC	500
Protection Class (except shaft outlet)		IP65

INPUT CONNECTION



OUTPUT CONNECTION



ISO 8015	ISO 1302	ISO 2768 cK	ISO 13715	Weight: ~1.35 kg	
			Date	Name	
			Drawn	04.12.2017	Import
			Reviewed	05.04.2018	Wang_X
			Released	05.04.2018	Wang_X
01	unification PD4 -GM	Schneid_A	25.03.2021	<div style="text-align: center;"> <p>Nanotec PLUG & DRIVE</p> </div>	
REV	Rev. Text	Name	Date		
<p>PD4-EB59CD-E-65-4</p>				<p>09000011</p>	
				State: Released	Rev: 01
				CONFIDENTIAL	