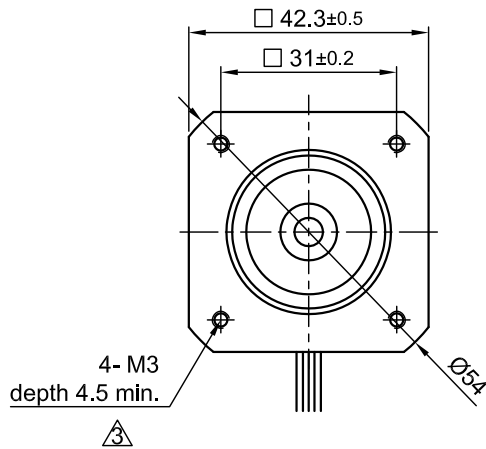
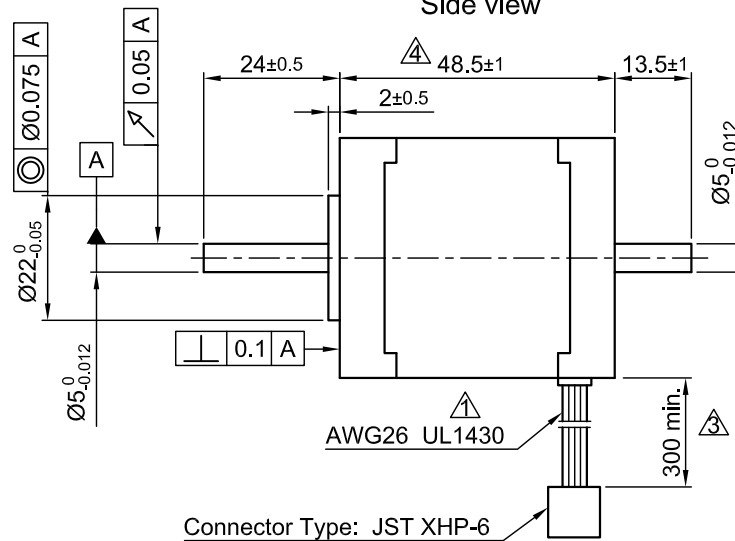


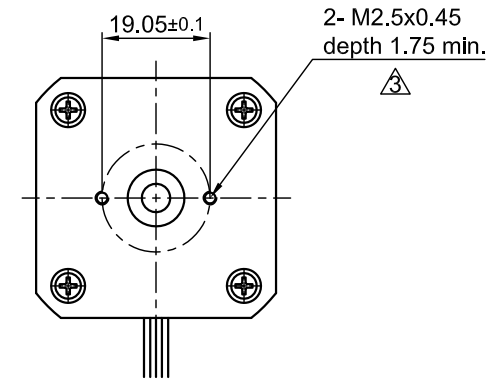
Front view and mounting



Side view



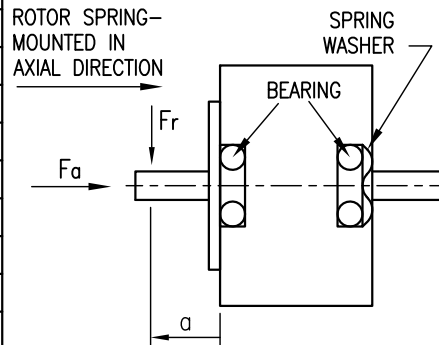
Rear view



Connector Type: JST XHP-6

SPECIFICATION	CONNECTION	
	UNIPOLAR OR BIPOLAR-1 WINDING	BIPOLAR SERIAL
VOLTAGE (VDC)	4.0	5.6
AMPS/PHASE	1.2	0.85
RESISTANCE/PHASE (Ohms)@25°C	3.3±15%	6.6±15%
INDUCTANCE/PHASE (mH) @1KHz	3.4±20%	13.6±20%
HOLDING TORQUE (Nm) [lb-in]	0.35 [3.1]	0.495 [4.381]
DETENT TORQUE (Nm) [lb-in]	1.37x10 ⁻² [0.1212]	
STEP ANGLE (°)	1.8	
STEP ACCURACY (NON-ACCUM)	±5%	
ROTOR INERTIA (Kg-m ²) [lb-in ²]	8.2x10 ⁻⁶ [2.8x10 ⁻²]	
WEIGHT (Kg) [lb]	0.34 [0.75]	

PERMISSIBLE RADIAL+AXIAL FORCE



	AXIAL-FORCE Fa (N)				
	Fa=7				
AMBIENT TEMPERATURE -10°~ 50°C [14°F ~ 122°F]	DISTANCE a (mm)	5	10	15	20
INSULATION RESISTANCE 100 MOhm (UNDER NORMAL TEMPERATURE AND HUMIDITY)	RADIAL-FORCE Fr (N)	58	36	26	20
INSULATION CLASS B 130° [266°F]		AXIAL		RADIAL	
DIELECTRIC STRENGTH 500VAC FOR 1 MIN. (BETWEEN THE MOTOR COILS AND THE MOTOR CASE)	SHAFT PLAY (mm)	0.08		0.02	
AMBIENT HUMIDITY MAX. 85% (NO CONDENSATION)	AT LOAD MAX: (N)	4.5		4.5	

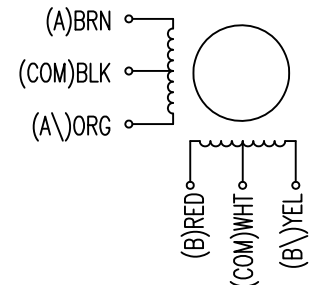
TYPE OF CONNECTION (EXTERN)			MOTOR		
UNIPOLAR	BIPOLAR		CONNECTOR PIN NO.	LEADS	WINDING
	1WINDING	SERIAL			
A ---	A ---	A ---	1	BRN	A
COM ---	COM ---	---	5	BLK	COM
A\ ---	---	A\ ---	3	ORG	A\
B ---	B ---	B ---	2	RED	B
COM ---	COM ---	---	6	WHT	COM
B\ ---	---	B\ ---	4	YEL	B\

for >speed ←
for <speed ←

FULL STEP 2 PHASE-Ex.,
WHEN FACING MOUNTING END (X)

STEP	A	B	A\	B\	CCW	CW
1	+	+	-	-	↓	↑
2	-	+	+	-	↓	↑
3	-	-	+	+	↓	↑
4	+	-	-	+	↓	↑

WIRING DIAGRAM



4	change motor length	01.06.16	A.S.				APVD	S.Ha.	26.02.07	STEPPING MOTOR	
3	rework draw/change depth M2.5/M3	10.02.16	A.S.				CHKD				
2	VALUE OF BACK-EMF	13.06.11	GYQ	Surface specification	General tolerances	Work piece edge	DRN	J.W.	29.11.06	DWG.NO	ST4118L1206-B
REV	DESCRIPTION	DATE	DRN	DIN ISO 1302	DIN ISO 2768- cH	DIN ISO 13715	SIGNATURE		DATE		