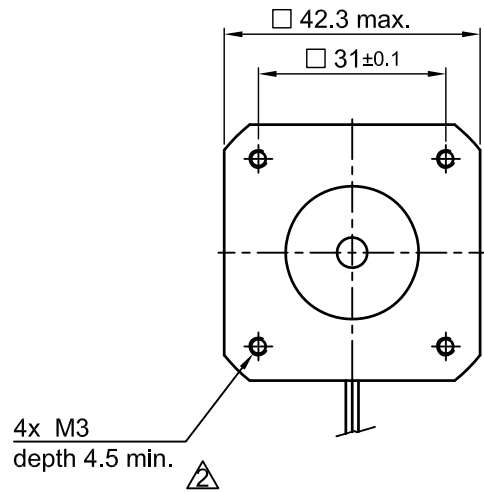
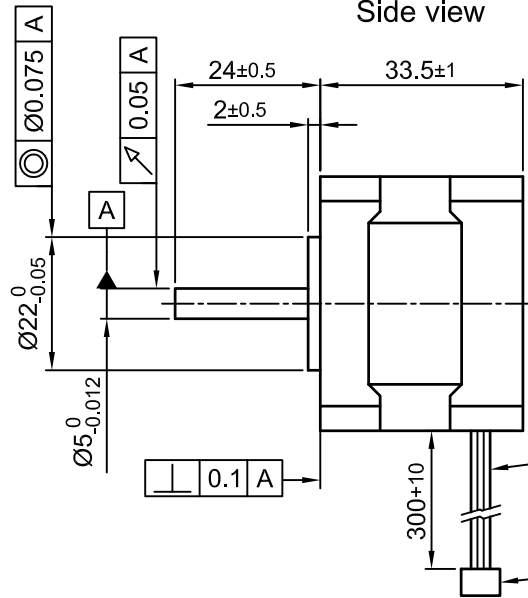


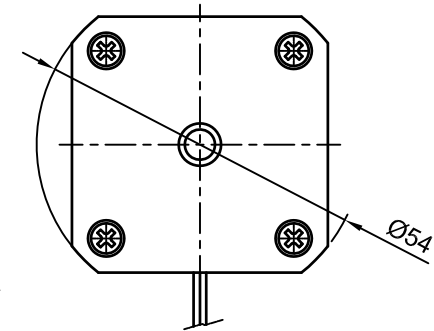
Front view and mounting



Side view



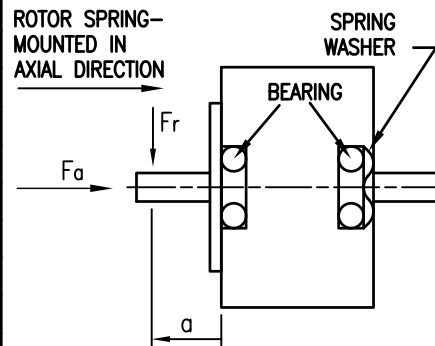
Rear view



Connector: JST XHP-6
Contact: JST SHX-001T-P0.6

SPECIFICATION	CONNECTION	
	UNIPOLAR OR BIPOLAR-1 WINDING	BIPOLAR SERIES
VOLTAGE (VDC)	4.0	5.63
AMPS/PHASE	0.95	0.67
RESISTANCE/PHASE (Ohms)@25°C	4.2±15%	8.4±15%
INDUCTANCE/PHASE (mH) @1KHz	4.0±20%	16±20%
HOLDING TORQUE (Nm) [lb-in]	0.15 [1.328]	0.212 [1.876]
STEP ANGLE (°)	0.9	
STEP ACCURACY (NON-ACCUM)	±5%	
ROTOR INERTIA (Kg-m ²) [lb-in ²]	3.5x10 ⁻⁶ [0.012]	
WEIGHT (Kg) [lb]	0.22 [0.49]	

PERMISSIBLE RADIAL+AXIAL FORCE

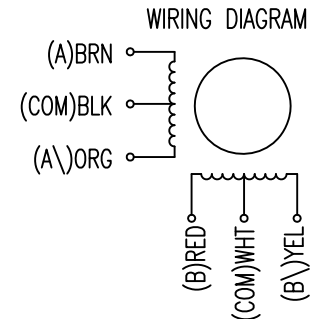


UNIPOLAR	TYPE OF CONNECTION (EXTERN)		MOTOR		
	1WINDING	BIPOLAR SERIES	CONNECTOR PIN NO.	LEADS	WINDING
A	A	A	1	BRN	A
COM	COM		5	BLK	COM
A\		A\	3	ORG	A\
B	B	B	2	RED	B
COM	COM		6	WHT	COM
B\		B\	4	YEL	B\

for >speed ←
for <speed ←

FULL STEP 2 PHASE-Ex., WHEN FACING MOUNTING END (X)

STEP	A	B	A\	B\	CCW	CW
1	+	+	-	-	↓	↑
2	-	+	+	-	↓	↑
3	-	-	+	+	↓	↑
4	+	-	-	+	↓	↑



	TEMPERATURE RISE: MAX.80°C (MOTOR STANDSTILL; FOR 2 PHASE ENERGIZED)		AXIAL-FORCE Fa (N)		Fa=7	
	AMBIENT TEMPERATURE -10°~ 50°C [14°F ~ 122°F]	INSULATION RESISTANCE 100 MOhm (UNDER NORMAL TEMPERATURE AND HUMIDITY)	DISTANCE a (mm)	RADIAL-FORCE Fr (N)	AXIAL	RADIAL
		INSULATION CLASS B 130° [266°F]				
		DIELECTRIC STRENGTH 500VAC FOR 1 MIN. (BETWEEN THE MOTOR COILS AND THE MOTOR CASE)	SHAFT PLAY (mm)		0.075	0.025
		AMBIENT HUMIDITY MAX. 85% (NO CONDENSATION)	AT LOAD MAX: (N)		10	5.0

				Nanotec PLUG & DRIVE		APVD	G.S.	30.11.16	STEPPING MOTOR	
2	change tol./remove detent to.	11.05.17	A.S.	Surface specification DIN ISO 1302	General tolerances DIN ISO 2768- cH	CHKD				
1	new drawing	30.11.16	A.S.	Work piece edge DIN ISO 13715		DRN	A.S.	30.11.16	DWG.NO	
REV	DESCRIPTION	DATE	DRN			SIGNATURE	DATE	ST4209S1006-A		