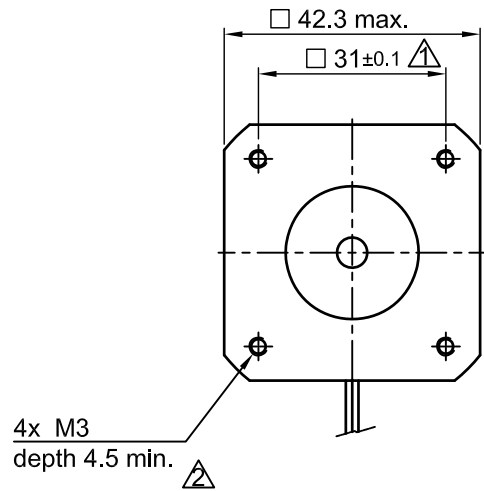
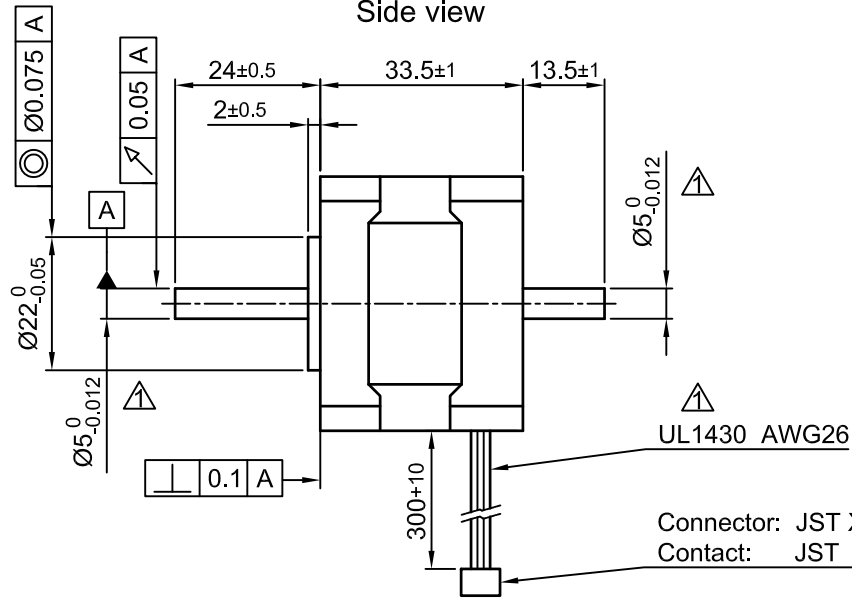


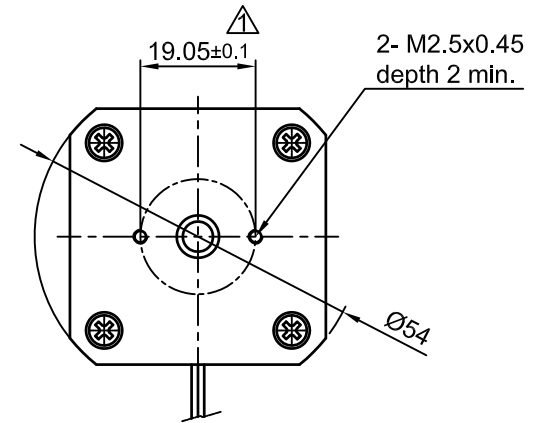
Front view and mounting



Side view



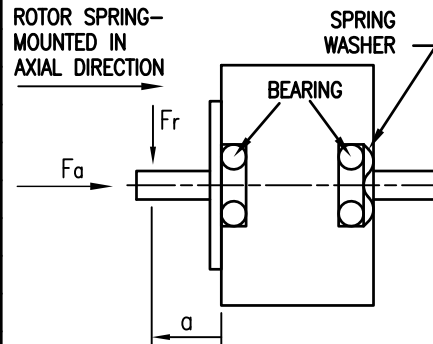
Rear view



Connector: JST XHP-6
Contact: JST SHX-001T-P0.6

SPECIFICATION	CONNECTION	
	UNIPOLAR OR BIPOLAR-1 WINDING	BIPOLAR SERIES
VOLTAGE (VDC)	4.0	5.63
AMPS/PHASE	0.95	0.67
RESISTANCE/PHASE (Ohms)@25°C	4.2±15%	8.4±15%
INDUCTANCE/PHASE (mH) @1KHz	4.0±20%	16±20%
HOLDING TORQUE (Nm) [lb-in]	0.15 [1.328]	0.212 [1.876]
STEP ANGLE (°)	0.9	
STEP ACCURACY (NON-ACCUM)	±5%	
ROTOR INERTIA (Kg-m ²) [lb-in ²]	3.5x10 ⁻⁶ [0.012]	
WEIGHT (Kg) [lb]	0.22 [0.49]	

PERMISSIBLE RADIAL+AXIAL FORCE



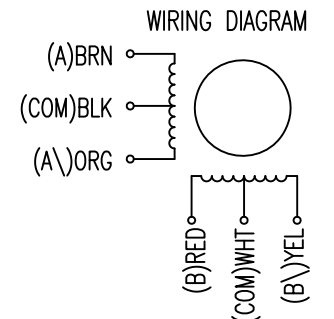
	AXIAL-FORCE Fa (N)	
	Fa=7	
AMBIENT TEMPERATURE -10°~ 50°C [14°F ~ 122°F]	DISTANCE a (mm)	5 10 15 20
INSULATION RESISTANCE 100 MOhm (UNDER NORMAL TEMPERATURE AND HUMIDITY)	RADIAL-FORCE Fr (N)	58 36 26 20
INSULATION CLASS B 130° [266°F]		AXIAL RADIAL
DIELECTRIC STRENGTH 500VAC FOR 1 MIN. (BETWEEN THE MOTOR COILS AND THE MOTOR CASE)	SHAFT PLAY (mm)	0.075 0.025
AMBIENT HUMIDITY MAX. 85% (NO CONDENSATION)	AT LOAD MAX: (N)	10 5.0

TYPE OF CONNECTION (EXTERN)			MOTOR		
UNIPOLAR	BIPOLAR		CONNECTOR PIN NO.	LEADS	WINDING
	1WINDING	SERIES			
A ---	A ---	A ---	1	BRN	A ---
COM ---	COM ---	COM ---	5	BLK	COM ---
A\ ---	A\ ---	A\ ---	3	ORG	A\ ---
B ---	B ---	B ---	2	RED	B ---
COM ---	COM ---	COM ---	6	WHT	COM ---
B\ ---	B\ ---	B\ ---	4	YEL	B\ ---

for >speed ←---
for <speed ←---

FULL STEP 2 PHASE-Ex., WHEN FACING MOUNTING END (X)

STEP	A	B	A\	B\	CCW	CW
1	+	+	-	-	↓	↑
2	-	+	+	-	↓	↑
3	-	-	+	+	↓	↑
4	+	-	-	+	↓	↑



REV	DESCRIPTION	DATE	DRN
2	change tol./remove detent to.	11.05.17	A.S.
1	new drawing/change toler.	30.11.16	A.S.

Nanotec
PLUG & DRIVE

APVD	G.S.	30.11.16
CHKD		
DRN	A.S.	30.11.16
SIGNATURE	DATE	

STEPPING MOTOR

DWG.NO
ST4209S1006-B