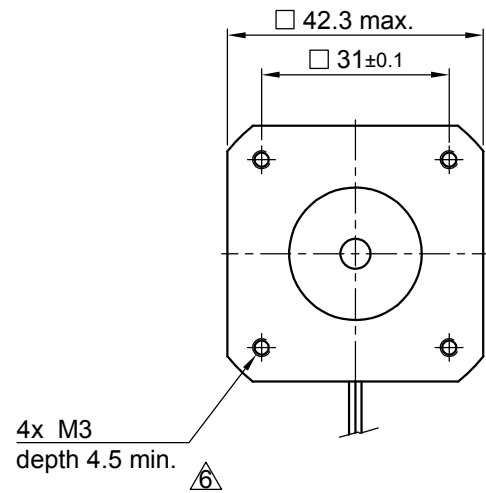
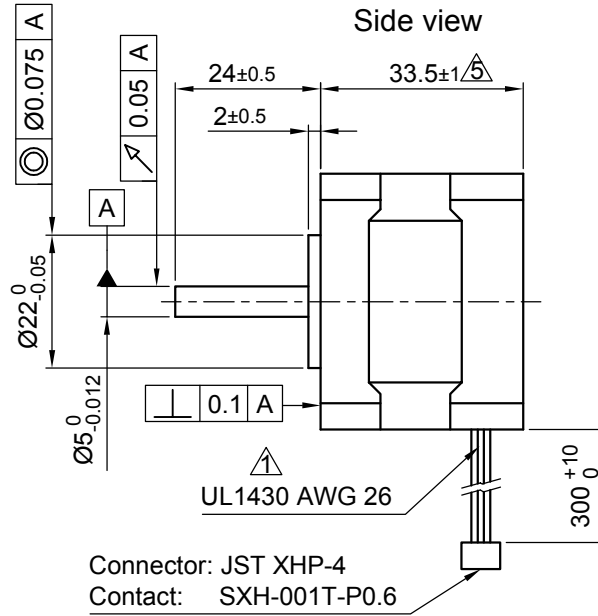


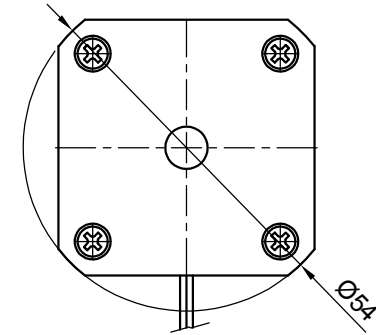
Front view and mounting



Side view



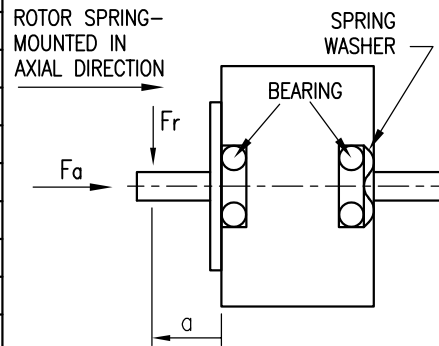
Rear view



Connector: JST XHP-4
Contact: SXH-001T-P0.6

SPECIFICATION	CONNECTION	BIPOLAR
VOLTAGE (VDC)		2.79
AMPS/PHASE		1.33
RESISTANCE/PHASE (Ohms)@25°C		2.1±15%
INDUCTANCE/PHASE (mH) @1KHz		5.2±20%
HOLDING TORQUE (Nm) [lb-in]		0.22 [1.947]
STEP ANGLE (°)		0.9
STEP ACCURACY (NON-ACCUM)		±5%
ROTOR INERTIA (Kg-m ²) [lb-in ²]		3.5x10 ⁻⁶ [1.2x10 ⁻²]
WEIGHT (Kg) [lb]		0.22 [0.49]

PERMISSIBLE RADIAL+AXIAL FORCE

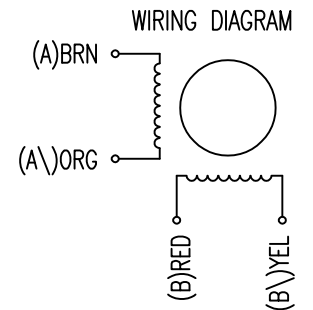


TEMPERATURE RISE: MAX.80°C (MOTOR STANDSTILL; FOR 2 PHASE ENERGIZED)	AXIAL-FORCE Fa (N)	Fa=7			
AMBIENT TEMPERATURE -10°~ 50°C [14°F ~ 122°F]	DISTANCE a (mm)	5	10	15	20
INSULATION RESISTANCE 100 MOhm (UNDER NORMAL TEMPERATURE AND HUMIDITY)	RADIAL-FORCE Fr (N)	58	36	26	20
INSULATION CLASS B 130° [266°F]			AXIAL	RADIAL	
DIELECTRIC STRENGTH 500VAC FOR 1 MIN. (BETWEEN THE MOTOR COILS AND THE MOTOR CASE)	SHAFT PLAY (mm)	0.075	0.025		
AMBIENT HUMIDITY MAX. 85% (NO CONDENSATION)	AT LOAD MAX: (N)	10	5.0		

TYPE OF CONNECTION (EXTERN)	MOTOR			
	BIPOLAR	CONNECTOR PIN NO.	LEADS	WINDING
A —	1	BRN	A	
A\ —	2	ORG	A\	
B —	3	RED	B	
B\ —	4	YEL	B\	

FULL STEP 2 PHASE-Ex., WHEN FACING MOUNTING END (X)

STEP	A	B	A\	B\	CCW	CW
1	+	+	-	-	↓	↑
2	-	+	+	-	↑	↓
3	-	-	+	+	↓	↑
4	+	-	-	+	↑	↓



6	change tol./revise draw.	11.05.17	A.S.	Nanotec PLUG & DRIVE	APVD	<i>S.Hα.</i>	26.02.07	STEPPING MOTOR
5	MOTOR LENGTH TOL.	03.04.17	G.S.		CHKD			
4	BACK-EMF REMOVED	06.06.12	J.W.	Surface specification DIN ISO 1302	DRN	<i>J.W.</i>	28.06.06	DWG.NO
REV	DESCRIPTION	DATE	DRN		General tolerances DIN ISO 2768- cH	Work piece edge DIN ISO 13715	SIGNATURE	DATE